



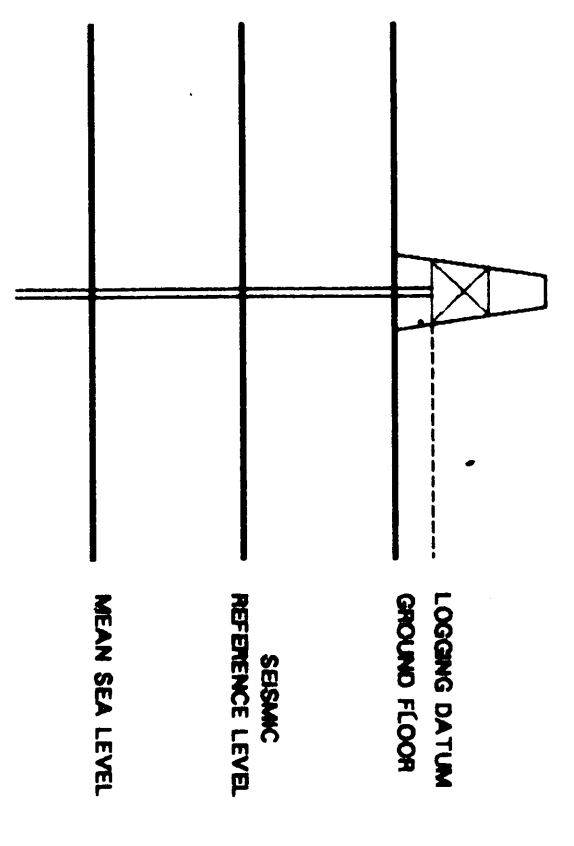
# SEISMIC CALIBRATION LOG

(Adjusted Continuous Velocity Log)

Company: BEACH PETROLEUM N.L.  
 Well: WILSON - 1  
 Field: WILDCAT  
 Country: AUSTRALIA

Reference No: 5708804 Interval: 0.00 to 1316.00  
 Date Logged: 24/07/87 Date Processed: 31/07/87  
 Location: 037 56' 22.4" S 141 08' 31.9" E  
 Elevations: KB: 56.2 F DF: 55.9 F GL: 51.8 F  
 Permanent Datum: MSL Depth Units: METRES

FIELD RECORDING: Engineer: J. PATEL Location: VEA Program Version: 28.4  
 COMPUTER: Analyst: M. SANDERS Centre: SVJ Baseline: 14.8X4  
 ELEVATION ABOVE MEAN SEA LEVEL  
 Logging Datum: 56.2 M  
 Seismic Reference Datum: MSL  
 Ground Level: 51.6 M

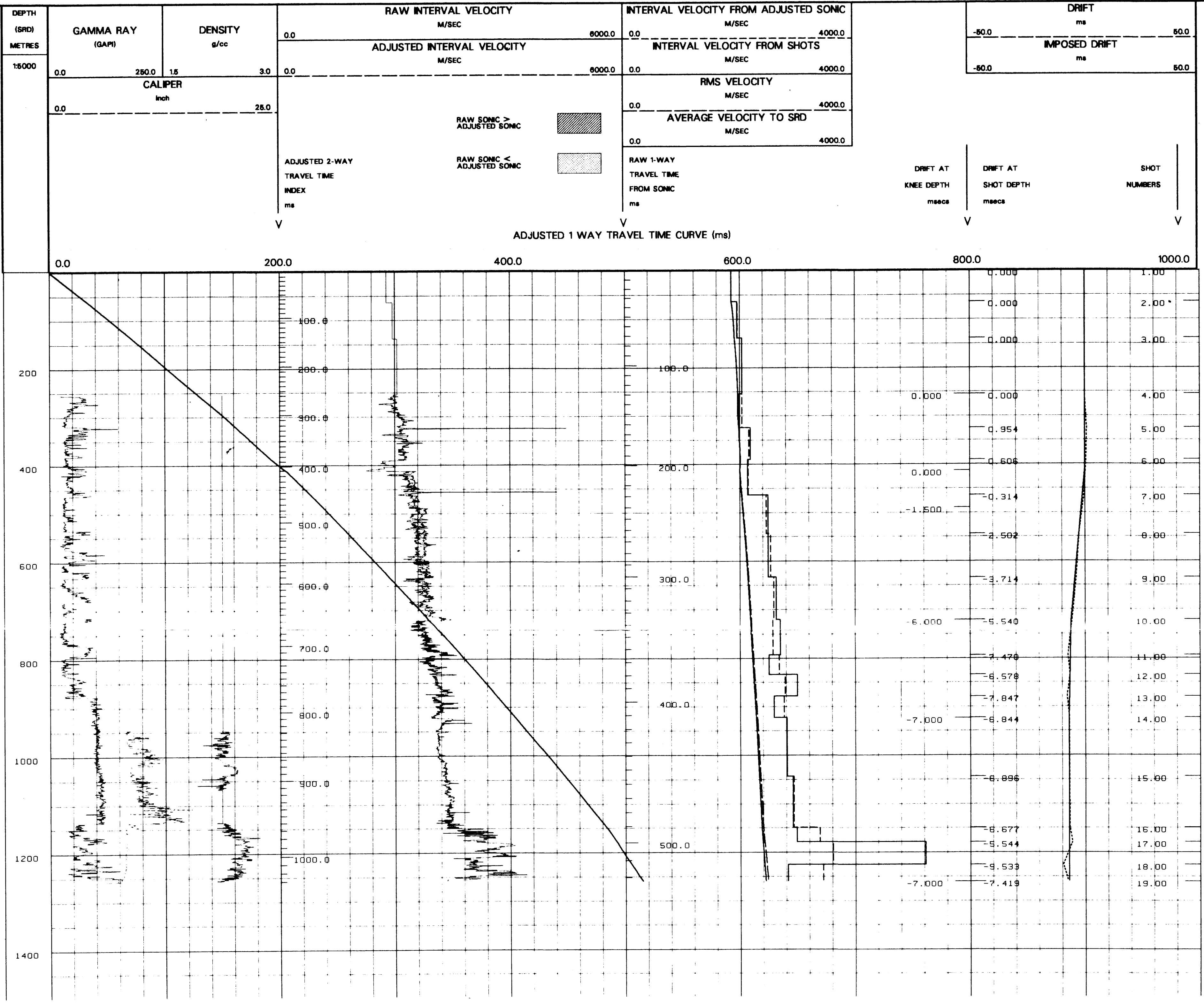


Total Number of Levels: 19 (56.6 to 1316 Metres below KB)  
 Depth Reference: SRD  
 Time Reference: SRD

Run	Date	Tool Type	Bit Size/Depth	Casing Size/Depth	Top Depth	Bottom Depth
1	24-07-87	BHC	8 1/2" @ 1317 M	9 5/8" @ 512 M	312	1316
Time Reference			SRD			
VSP Run	Date	Gun Offset	Hydro Offset	Gun Elevation	Hydrophone Elevation	Gun Azimuth
1	24-07-87	37 M		1 M below GL	1 M below GL	270°

FOLD HERE The well name, location and borehole reference data were furnished by the customer.

All interpretations are opinions based on inferences from electrical or other measurements and we cannot, and do not guarantee the accuracy or correctness of any interpretations, and we shall not, except in the case of gross or willful negligence on our part, be liable or responsible for any loss, costs, damages or expenses incurred or sustained by anyone resulting from any interpretations made by any of our officers, agents or employees. These interpretations are also subject to Clause 4 of our General Terms and Conditions as set out in our current Price Schedule.



COMPANY BEACH PETROLEUM N.L.  
 FIELD WILDCAT  
 WELL WILSON - 1  
 COUNTRY AUSTRALIA