

# SEISMIC CALIBRATION LOG

(Adjusted Continuous Velocity Log)

Company: BEACH PETROLEUM N.L. **PETROLEUM DIVISION**

Well: WESTGATE - 1 *From W.C.R.* 03 FEB 1987

Field: WILDCAT

Country: AUSTRALIA

Reference No: 560311 Interval: 0.00 to 1912.00

Date Logged: 14/03/86 Date Processed: 30/05/86

Location: 038 28' 01.02" S 142 53' 12.34" E

Elevations: KB: 94.3 M DF: 94.2 M GL: 88.1 M

Permanent Datum: MSI Depth Units: METRES

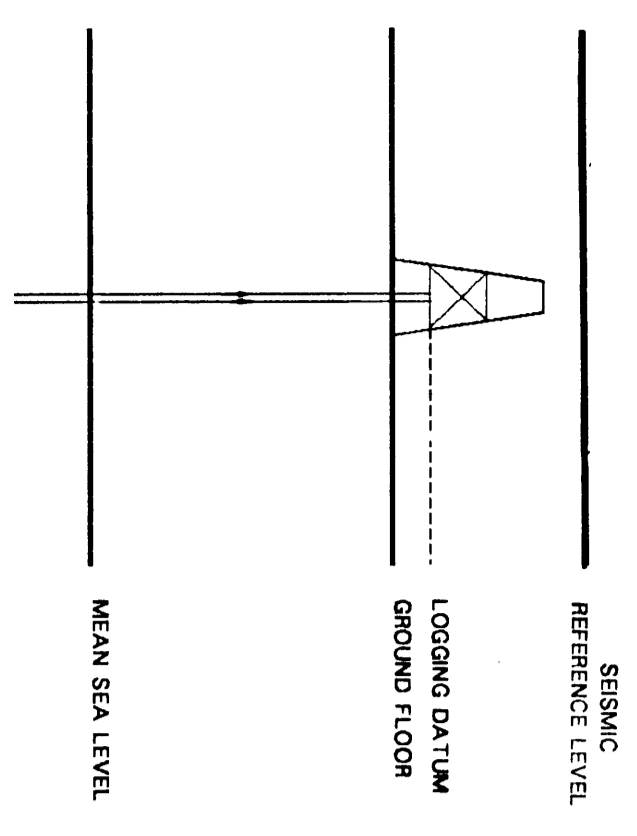
FIELD RECORDING: Engineer: A. JAMES Location: OGA Program Version: 282A

COMPUTATION: Analyst: M. SANDERS Centre: STJ Baseline: 14.2

Logging Datum: 94.3 M

Seismic Reference Datum: 150.0 M

Ground Floor: 88.1 M



Total No. of Check Levels: 6 (from 520 to 95 M below KB)

Velocity Log Depth Reference: SRD

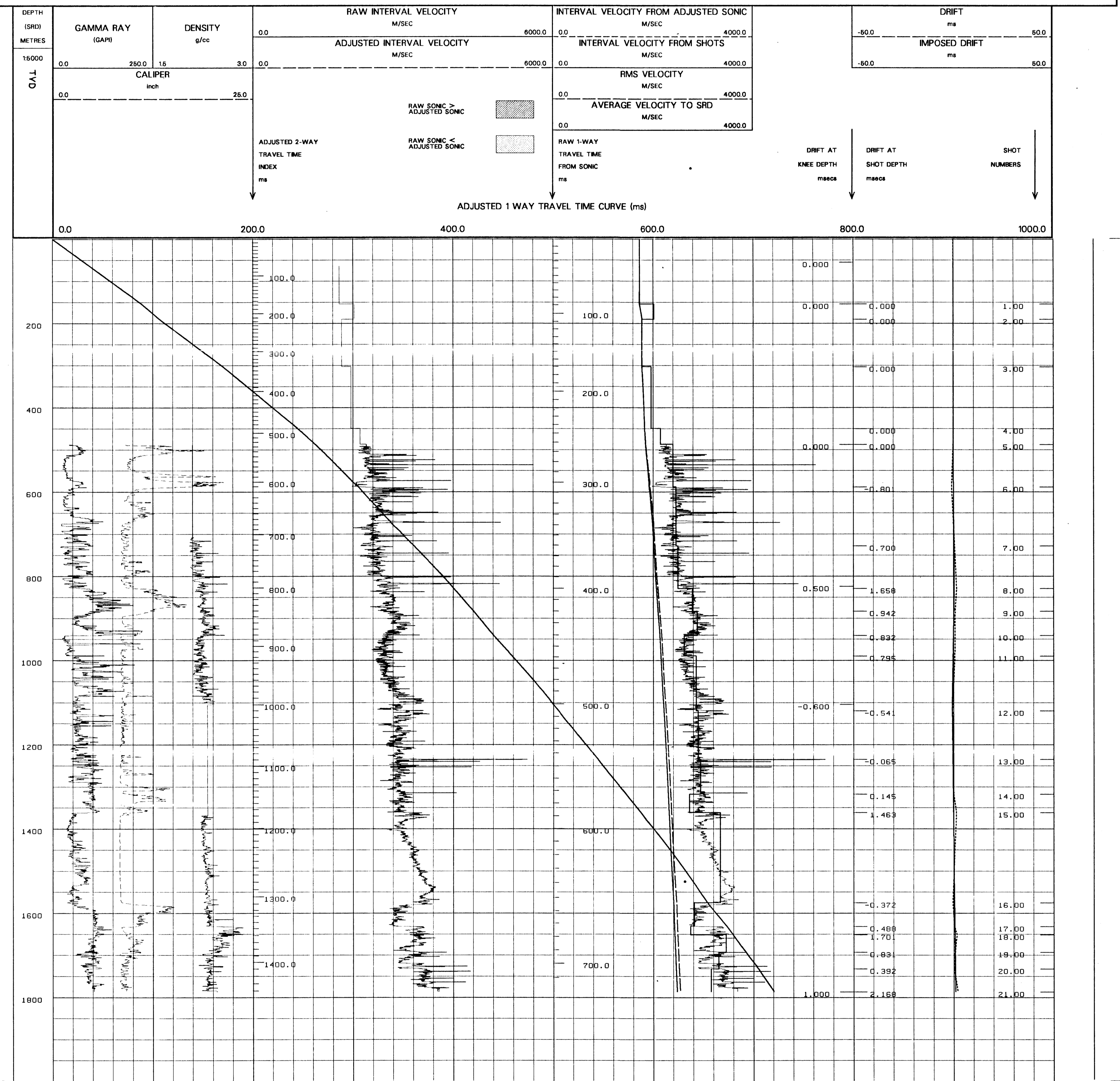
Velocity Log Time Reference: SRD

| Run | Date     | Tool Type | Bit Size/Depth  | Casing Size/Depth | Top Depth | Bottom Depth |
|-----|----------|-----------|-----------------|-------------------|-----------|--------------|
| 1   | 09/03/86 | SIS       | 8 1/2" @ 125 M  | 8 5/8" @ 453 M    | 483 M     | 125 M        |
| 2   | 13/03/86 | SIS       | 8 1/2" @ 1916 M | 8 5/8" @ 453 M    | 125 M     | 1905 M       |

SONIC LOG INTERVAL 455 - 1905 M BELOW KB  
 DENSITY LOG INTERVAL 700 - 1915 M BELOW KB  
 BOTTOM SHOT @ 1912 M BELOW KB  
 TOP SHOT @ 99 M

FOLD HERE The well name, location and borehole reference data were furnished by the customer

All interpretations are opinions based on inferences from electrical or other measurements and we cannot, and do not guarantee the accuracy or correctness of any interpretations, and we shall not, except in the case of gross or willful negligence on our part, be liable or responsible for any loss, costs, damages or expenses incurred or sustained by anyone resulting from any interpretations made by any of our officers, agents or employees. These interpretations are also subject to Clause 4 of our General Terms and Conditions as set out in our current Price Schedule.



JL

|              |         |                      |
|--------------|---------|----------------------|
| Schlumberger | COMPANY | BEACH PETROLEUM N.L. |
|              | FIELD   | WILDCAT              |
|              | WELL    | WESTGATE - 1         |
|              | COUNTRY | AUSTRALIA            |