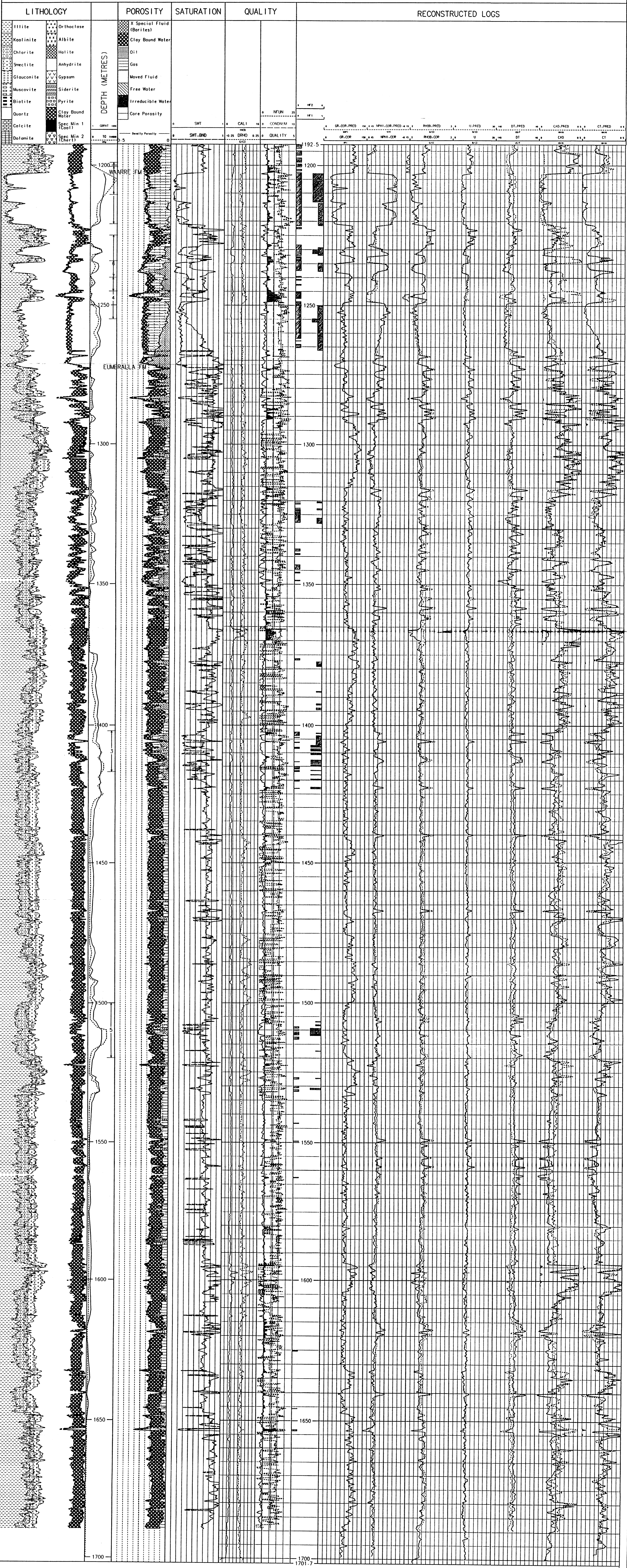


SKULL-CREEK-1

The Schlumberger Log Analysis Company Pty Ltd
 P.O. Box 1111, Toronto, ON, Canada M5E 1B8
 Tel: 416 291 1500 Fax: 416 291 1700
 email: sales@slc.com



DISCLAIMER

Interpretations of logs, whether made directly from original logs or by electronic data processing from actual or digitized data, or from electrically transmitted data or otherwise, are opinions or recommendations based upon such interpretations. Such opinions are based on inferences from physical or other measurements, empirical factors, and assumptions. Such inferences are not infallible and different opinions may exist. Accordingly we do not warrant the accuracy or correctness of any such interpretation or recommendation. Under no circumstances should any such interpretation or recommendation be relied upon as the sole basis for any production, completion, or financial decision. We do not guarantee results. We make no warranties express or implied. Under no circumstances shall we be liable for consequential damages.

ModLog Ref: ML-CUL-008

VOLUME OPTIMIZED LOG ANALYSIS (MULTIMIN)

CULTUS PETROLEUM N.L.

SKULL-CREEK-1



Client: CULTUS N.L.
 Analyst: A.P. CALCRAFT

Date: 21-Apr-97