

COMPOSITE WELL LOG

COMPANY: FROME-BROKEN HILL CO. PTY. LTD.

PETROLEUM TENEMENT: P.E.P. No. 6 VICTORIA WELL NUMBER: SHERBROOK No. 1

STATE: VICTORIA 4 MILE SHEET: COLAC BASIN: OTWAY WELL STATUS: DRY & ABANDONED

LOCATION: LAT. 38°37'33" S LONG. 143°07'16" E
 ELEVATION: REFERENCE PT. (RT) 480' A.S.L.
 GROUND 467' A.S.L.

DATE SPUN/DEEP: 19 NOVEMBER 1963
 DATE DRILLING STOPPED: 19 DECEMBER 1963
 DATE RIG OFF: 19 DECEMBER 1963

TOTAL DEPTH DRILLER: 5454 feet
 TOTAL DEPTH ELECTRIC LOG: 5414 feet

HOLE SIZE: IN FROM TO
 12 1/4" 17 1/2" Surface 605' 460' A.S.L.
 9 3/4" Surface 605' 5434'

CASING: IN WT GR DEPTH CMT CMT'D TO
 20" Conductor 24' 605' Surface
 13 1/4" 48# H40 605' 650sx Surface

CEMENT PLUGS: FROM TO SACKS
 3600' 700' 116
 500' Surface 138
 10

WELL HEAD FITTINGS: 1 1/2" CAPPED W/PLATE
 DRILLED BY: DRILLING CONTRACTORS (AUSTRALIA) LTD.
 LOGGED BY: SCHLUMBERGER CEMENTED BY: HALL/BURTON
 DRILLING METHOD: ROTARY MUD LOGGING BY: F.B.H.

ELECTRIC LOG DATA

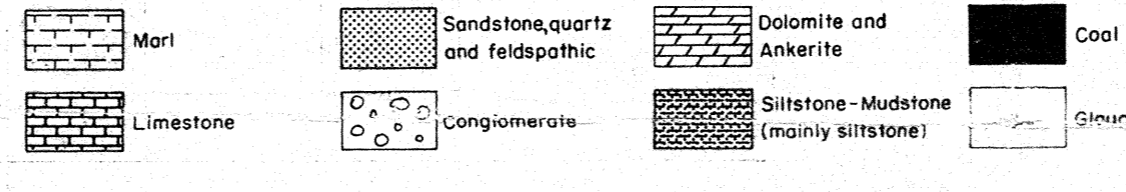
RUN NUMBER	1	2	3	4
DATE	20 Nov 1963	24 Nov 1963	29 Nov 1963	16 Dec 1963
FOOTAGE LOGGED	254'	1882'	995'	2232'
LOGGED FROM	254'	2436'	3331'	5413'
LOGGED TO	33'	604'	2386'	3183'
TOTAL DEPTH-ELECTRIC LOG	588'	2467'	3382'	5414'
TOTAL DEPTH-DRILLER	2484'	2484'	3376'	5414'
CASING SHOE-ELECTRIC LOG	604'	604'	604'	604'
CASING SHOE-DRILLER	24'	605'	605'	605'
BIT SIZE	24"	16"	16"	16"
MUD-KIND	Natural	Spersene	Spersene	Spersene
TREATMENT	Water	Gel/Coastic	Gel/Coastic	Gel/Coastic
WATER LOSS cc/30min	24	15	15	6
WEIGHT lbs/gal	10.2	10.2	10.4	10.4
VISCOSITY (Moresh) sec	45	52	60	60
RESISTIVITY A.M.M. and TEMPERATURE 99	4.50 at 73°	0.84 at 73°	0.65 at 76°	0.65 at 82°
RESISTIVITY at B.H.T.	0.54 at 16°	0.42 at 118°	0.32 at 160°	
MAX RECORDED TEMPERATURE	16°	118°	160°	160°
ELECTRODE SPACING	16"	16"	16"	16"
SYMMETRICAL	64"	64"	64"	64"
RECORDED BY	J. White	J. White	J. White	J. White

RADIOMETRIC LOG DATA

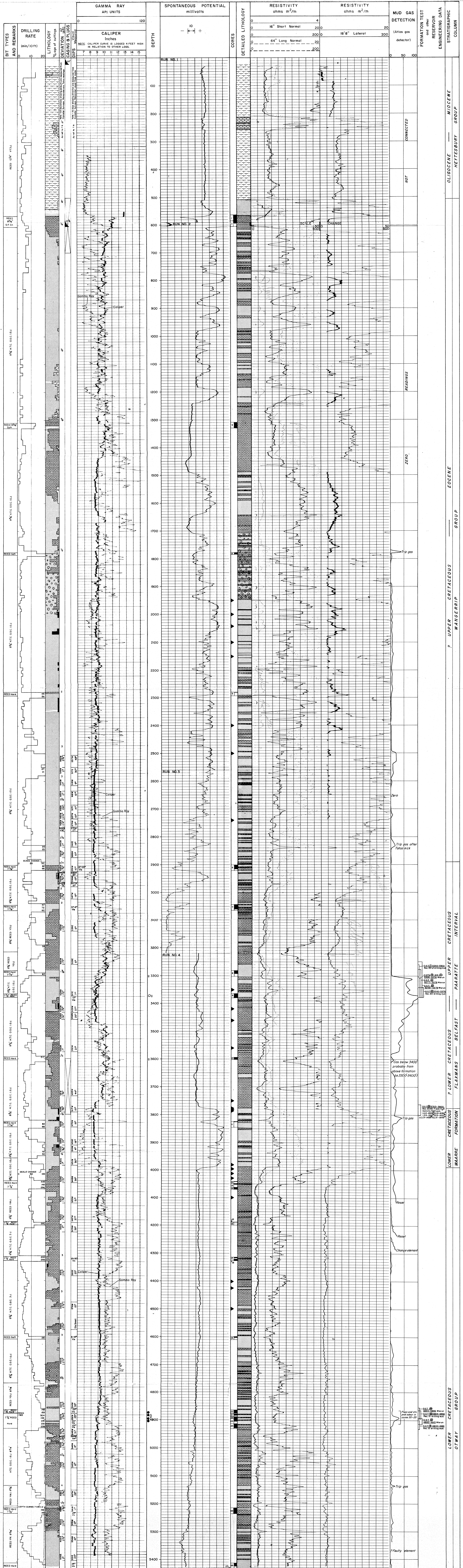
TYPE OF LOG	GAMMA RAY
RUN NUMBER	16 Dec 1963
DATE	5434'
TOTAL DEPTH-DRILLER	605'
TOTAL DEPTH-ELECTRIC LOG	5404'
BOTTOM OF LOGGED INTERVAL	5404'
TYPE OF FLUID IN HOLE	MUD
FLUID LEVEL	SURFACE
MAX RECORDED TEMPERATURE	160°
TIME CONSTANT	2secs
LOGGING SPEED	1 ft/min
STATISTICAL VARIATION	300
SENSITIVITY REFERENCE	RECORDED BY JAW WHITE
OPEN HOLE RECORD	
BIT SIZE	INTERVAL-FT
IN	FROM TO
16"	605' 5414'

OTHER BORE HOLE LOGS
 MICROLOG: 605'-5413' RUNS 2 and 3
 SONIC LOG: 25'-574' and in conjunction with GR to T.D.
 LATEROLOGS: 2800'-5414' RUN 1
 CONTINUOUS DIPMETER: 2500'-5400' RUN 1
 VELOCITY SURVEY: AT T.D.

LITHOLOGIC REFERENCE



WELL SYMBOLS
 ○ Gas show, slight
 ● Oil show, slight
 ⊠ Sidewall core
 ⊞ Formation well interval and number
 ⊙ CH



Schlumberger T.D. 5414 feet
 Drillers T.D. 5434 feet
 DRY and ABANDONED DEC. 18 1963