

# LINE OPP-85B-32

DEPT. NAT. RES & ENV  
PE900989



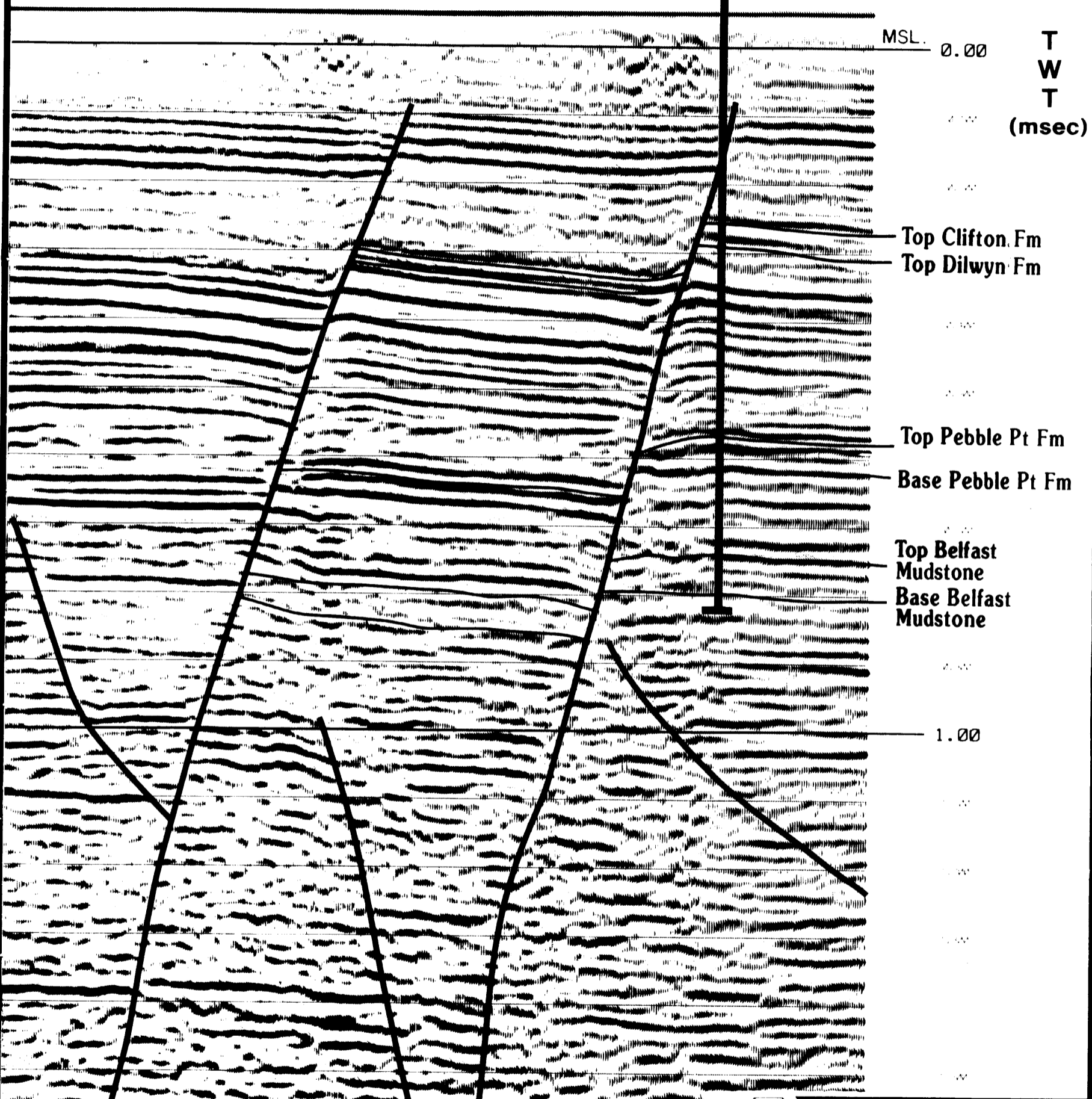
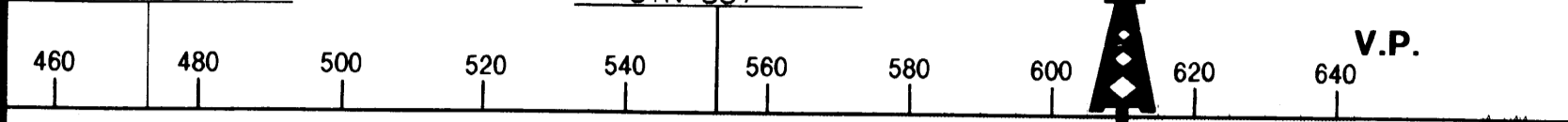
1 kilometre

SHAW-1

VP 610 (Intersection of OPP-85A-07, VP 624)

L-OPP-85B-35  
STN 411

L-OPP-85B-37  
STN 357



MSL. 0.00  
T  
W  
T  
(msec)

Top Clifton Fm  
Top Dilwyn Fm

Top Pebble Pt Fm  
Base Pebble Pt Fm

Top Belfast  
Mudstone  
Base Belfast  
Mudstone

1.00



PEP111  
Otway Basin  
Victoria

**SHAW-1**  
Post-Drill  
Interpretation

Auth: WDP

Date: Feb.'92