

COMPANY: BEACH PETROLEUM N.L.  
 WELL: PRINCES #1 ENCL 1-4 W.C.R  
 FIELD: WILDCAT  
 PERMIT: PEP 108  
 STATE: VICTORIA  
 NATION: AUSTRALIA  
 LOCATION: OTWAY BASIN  
 LINE TM12; S.P. 905  
 LATITUDE: 038 29'32" S  
 LONGITUDE: 142 59'20" E  
 PERMANENT DATUM: M.S.L. ELEVATIONS-  
 ELEV. OF PERM. DATUM: KB: 115.5 M  
 LOG MEASURED FROM: K.B. DF: 115.4 M  
 115.5 M ABOVE PERM. DATUM GL: 109.5 M  
 DRLG. MEASURED FROM: K.B.  
 DATE: 3 APR 86  
 RUN NO: 1  
 OTHER SERVICES-  
 LDL-CNL-GR  
 SLS-GR  
 SHDT-GR  
 WSS  
 CST-GR  
 PROGRAM  
 TAPE NO:  
 28.4  
 SERVICE  
 ORDER NO:

DEPTH-DRILLER: 1150.0 M  
 DEPTH-LOGGER: 1152.0 M  
 BTM. LOG INTERVAL: 1147.0 M  
 TOP LOG INTERVAL: 291.0 M  
 CASING-DRILLER: 291.0 M  
 CASING-LOGGER: 291.0 M  
 CASING: 9 5/8  
 WEIGHT: 36.0000 LB/F  
 BIT SIZE: 12 1/4 8 1/2  
 DEPTH: 295.0 M 1150.0 M

TYPE FLUID IN HOLE: KCL/POLYMER  
 DENSITY: 8.90 LB/G  
 VISCOSITY: 57.0 S  
 PH: 9.5  
 FLUID LOSS: 8.0 C3  
 SOURCE OF SAMPLE: FLDWLINE  
 RM: .216 OHMM AT 65.0 DEGF  
 RMF: .205 OHMM AT 68.0 DEGF  
 RMC: .250 OHMM AT 65.0 DEGF  
 SOURCE RMF/RMC: PRESS /PRESS  
 RM AT BHT: .140 OHMM AT 104. DEGF  
 RMF AT BHT: .139 OHMM AT 104. DEGF  
 RMC AT BHT: .162 OHMM AT 104. DEGF  
 TIME CIRC. STOPPED: 16:15 03/04  
 TIME LOGGER ON BTM.: 20:00 03/04  
 MAX. REC. TEMP: 104.0 DEGF  
 LOGGING UNIT NO: 2681  
 LOGGING UNIT LOC: QEA  
 RECORDED BY: OLIVIER BOUBE  
 WITNESSED BY: A. BUFFIN/B.RAYNER

REMARKS:  
 TENSION RECORDED IN DEPTH TRACK (0-3000 LBS).  
 TOOL STRING CENTRALIZED WITH THREE STAND-OFF 1.5".  
 INTEGRATED HOLE VOLUME PIPS = 0.1 CU.METE.  
 IN LEFT-EDGE DEPTH TRACK.  
 MSFL RECORDED FROM TD TO 545 METERS; CALIPER TO CSG.  
 GR MODE CHANGED TO WRAP AT 640 METERS.

EQUIPMENT NUMBERS-  
 NSM-A 1752 DLM-B 3785 MRM-AB 3874 SGC-JAA 279  
 SRE-BB 1765 DRS-B 817 SRA-A 988 DLC-BB 1931  
 DLS-E 864 DLE-DB 880

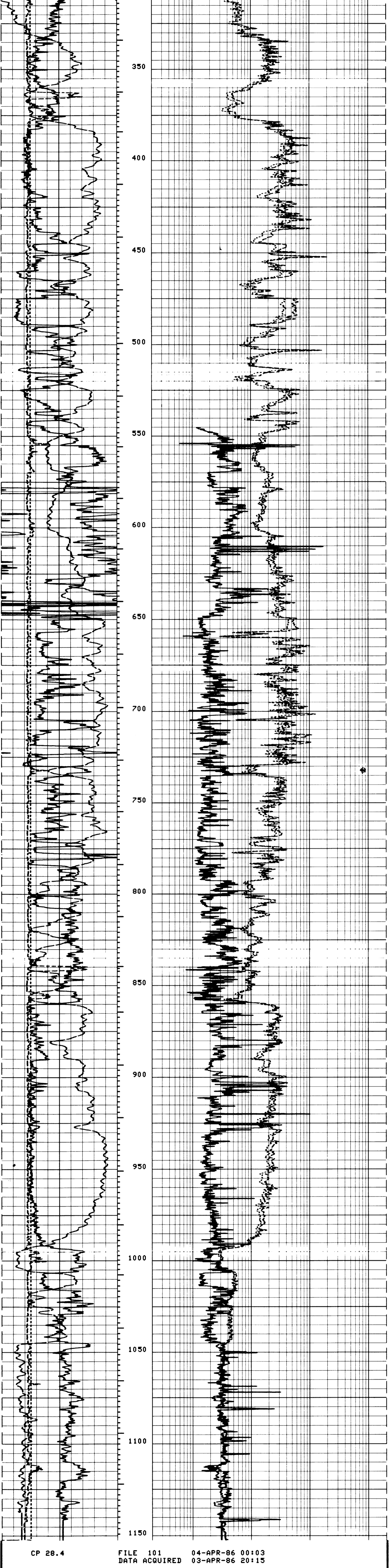
ALL INTERPRETATIONS ARE OPINIONS BASED ON INFERENCES FROM ELECTRICAL OR OTHER MEASUREMENTS AND WE CANNOT, AND DO NOT GUARANTEE THE ACCURACY OR CORRECTNESS OF ANY INTERPRETATIONS, AND WE SHALL NOT, EXCEPT IN THE CASE OF GROSS OR WILLFUL NEGLIGENCE ON OUR PART, BE LIABLE OR RESPONSIBLE FOR ANY LOSS, COSTS, DAMAGES OR EXPENSES INCURRED OR SUSTAINED BY ANYONE RESULTING FROM ANY INTERPRETATION MADE BY ANY OF OUR OFFICERS, AGENTS OR EMPLOYEES. THESE INTERPRETATIONS ARE ALSO SUBJECT TO OUR GENERAL TERMS AND CONDITIONS AS SET OUT IN OUR CURRENT PRICE SCHEDULE.

CP 28.4 FILE 101 04-APR-86 00:16  
 DATA ACQUIRED 03-APR-86 21:46

EVENT MARK SUMMARY:  
 OUTPUT INTERVAL DEPTH TRACK  
 BETWEEN PIPS EDGE  
 IHV .100000 M3 LEFT EDGE

BS (IN)	6.0000	16.0000	LLS (OHMM)	2000.0	200000
CALI (IN)	6.0000	16.0000	LLD (OHMM)	2000.0	200000
GR (GAPI)	0.0	150.00	LLS (OHMM)	.20000	2000.0
SP (MV)	-80.00	20.000	LLD (OHMM)	.20000	2000.0

CP 28.4 FILE 101 04-APR-86 00:08  
 DATA ACQUIRED 03-APR-86 21:46



CP 28.4 FILE 101 04-APR-86 00:03  
 DATA ACQUIRED 03-APR-86 20:15

BS (IN)	6.0000	16.0000	LLS (OHMM)	2000.0	200000
CALI (IN)	6.0000	16.0000	LLD (OHMM)	2000.0	200000
GR (GAPI)	0.0	150.00	MSFL (OHMM)	.20000	2000.0
SP (MV)	-80.00	20.000	LLS (OHMM)	.20000	2000.0
			LLD (OHMM)	.20000	2000.0

SENSOR MEASURE POINT TO TOOL ZERO  
 SPAR 19.74 METER SP 19.74 METER  
 CALI .89 METER GR 15.72 METER  
 S10 9.68 METER S190 9.68 METER  
 SV0 9.68 METER SV90 9.68 METER  
 D10 9.68 METER DV90 9.68 METER  
 DV0 9.68 METER DV90 9.68 METER  
 LLD 9.68 METER TENS 4.55 METER  
 I1 .86 METER LLS 9.68 METER  
 CMSF .79 METER

PARAMETERS  
 NAME VALUE UNIT NAME VALUE UNIT  
 SPT STAN IN WMUD 8.90000 LB/G  
 BS 8.50000 IN BHS OPEN  
 PP NORM DD 0.0 M

TAPE NOT MADE