

DEPT. NAT. RES & ENV



PE907167

VELOCITY SURVEY
OF
PORT CAMPBELL
No. 4
FOR
FROME-BROKEN HILL CO. PTY. LTD.,
VICTORIA, AUSTRALIA

ATTACHMENT TO WCR

PORT CAMPBELL-4

W484

UNITED GEOPHYSICAL CORP.

PARTY 149

6th JULY, 1964

W484

12¹³ 1 encl.

VELOCITY SURVEY
of
PORT CAMPBELL NO. 4

for
FROME - BROKEN HILL COMPANY PTY. LTD.
VICTORIA

by
UNITED GEOPHYSICAL CORPORATION
Party 149

6 July, 1964



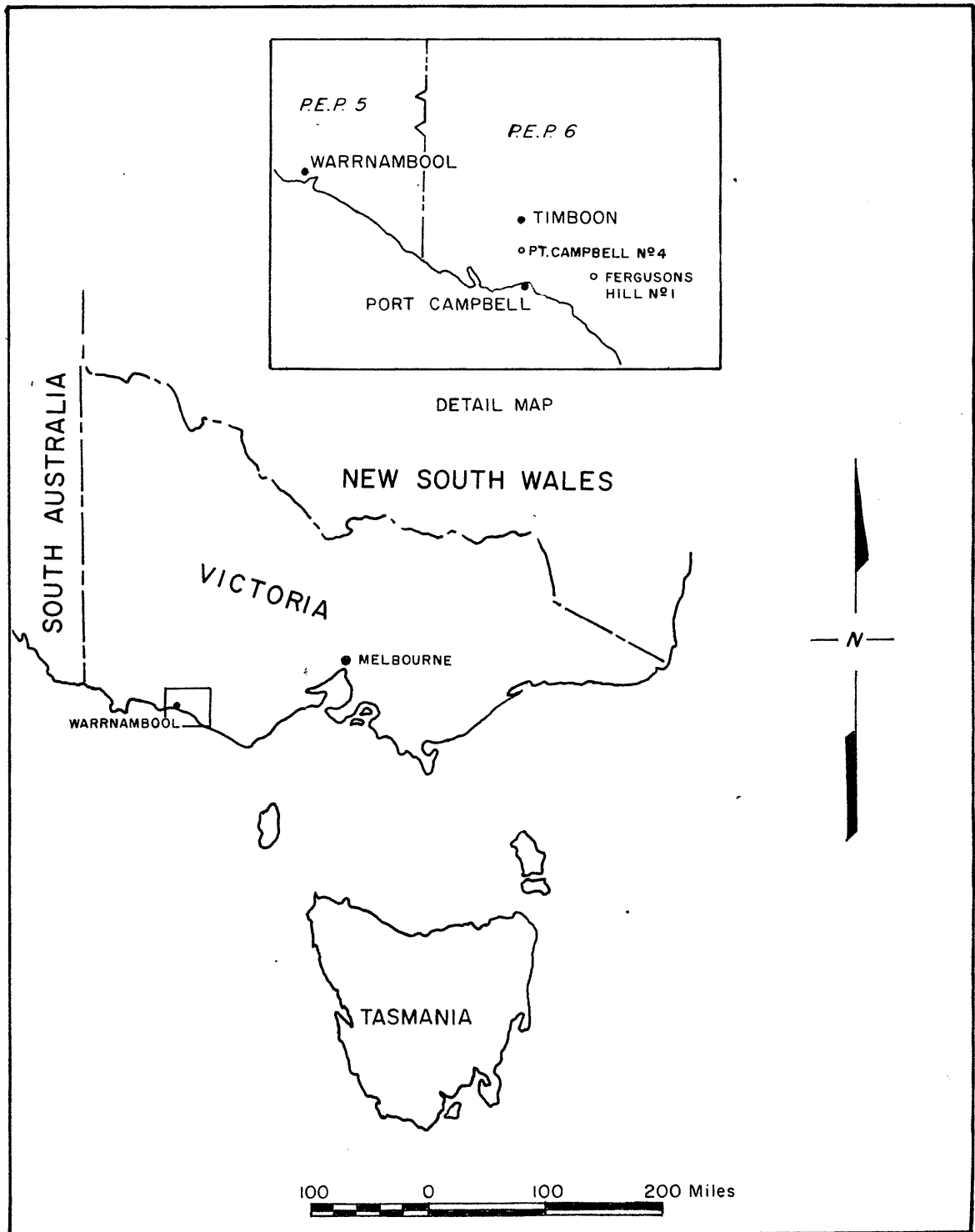


Fig. 1

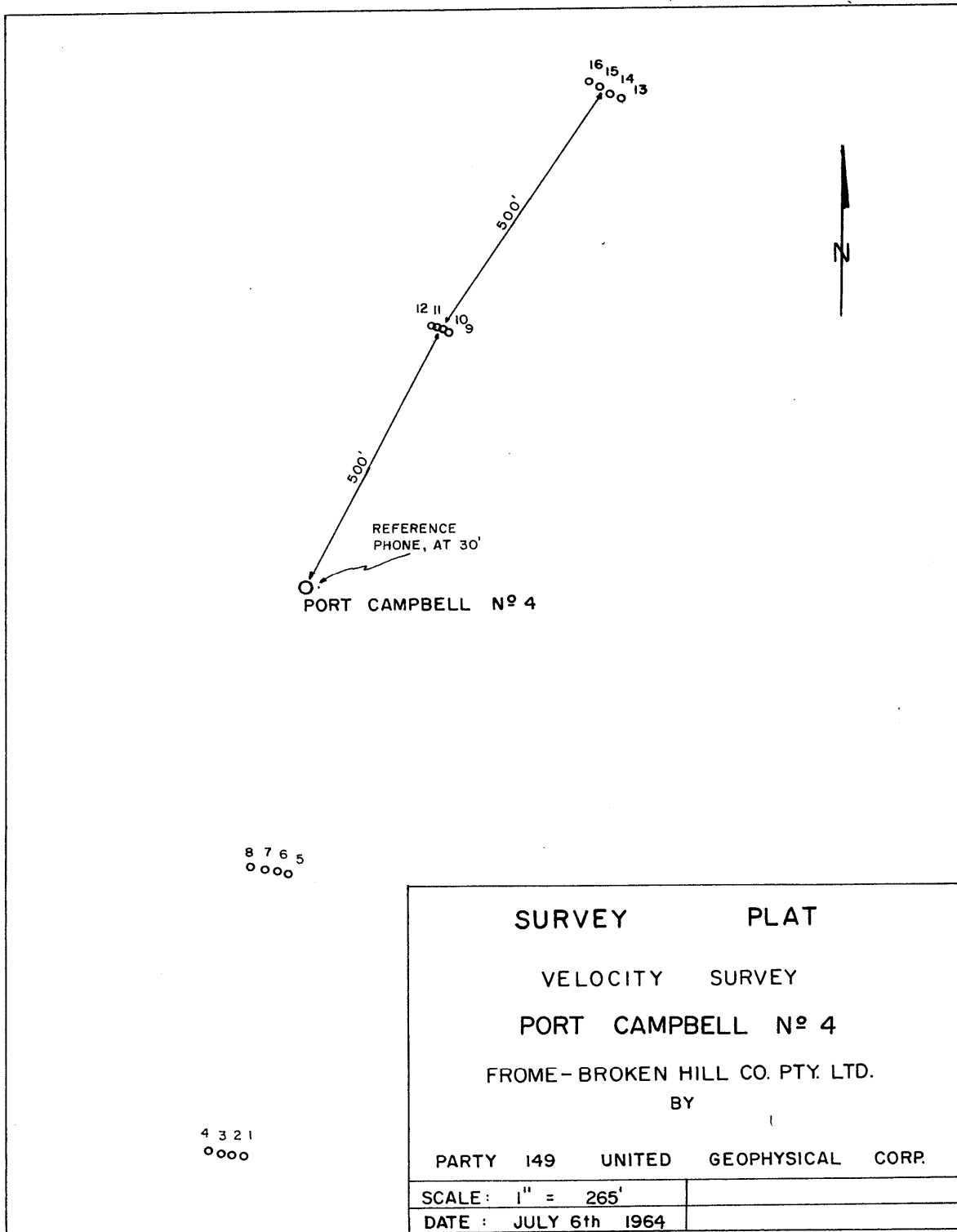


Fig. 3

INDEX

Summary Page 1
Statistics Page 2
Computations Fig. 4

ILLUSTRATIONS

✓ Locality Map Fig. 1
✓ Velocity Curves, reduced scale Fig. 2
✓ Survey Plat Fig. 3
✓ Seismograms, reduced At Back of Report
✓ Velocity Curves, full scale plot In Pocket

VELOCITY SURVEY, PORT CAMPBELL NO. 4

1.

A velocity survey was conducted for Frome - Broken Hill Company Pty. Ltd. at Port Campbell No. 4 on 6 July, 1964. All geophone breaks were good and the results are considered reliable.

Muddy field conditions prevented the drilling of holes at the 1000 ft. position south of the well. All shots taken on the south side were from the 500 ft. locations.

Each depth position of the geophone in the well was shot from both sides of the well. The results are based on the average of the computed times recorded.

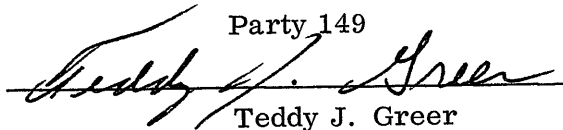
The curves plotted and submitted with this report indicate a smooth, gradual increase of both average and interval velocities. The average velocity to the maximum depth position, 7900 feet, is 8942 feet per second. A diagramatic curve at a reduced scale is included with this report. (Fig. 2). The full scale plot is also included.

A deep well geophone, pressure sensitive type, supplied by United Geophysical Corporation was used for this survey.

Respectfully submitted,

UNITED GEOPHYSICAL CORPORATION

Party 149


Teddy J. Greer



WELL VELOCITY SURVEYS

2.

STATISTICS :

Port Campbell
No. 4

Shots	16
Recording Driving Hours	6
Recording Field Hours	7
Recording Total Hours	13
Dynamite Used, Total Pounds	395
Caps Used	27
Dynamite per Shot	24.7
Drill Driving Hours	25.75
Drill Field Hours	56
Drill Total Hours	81.75
Total Holes Drilled	12
Total Footage Drilled	1255
Average Feet per Hole	104.5
Footage Drilled per Field	
Hours per Drill	22.4

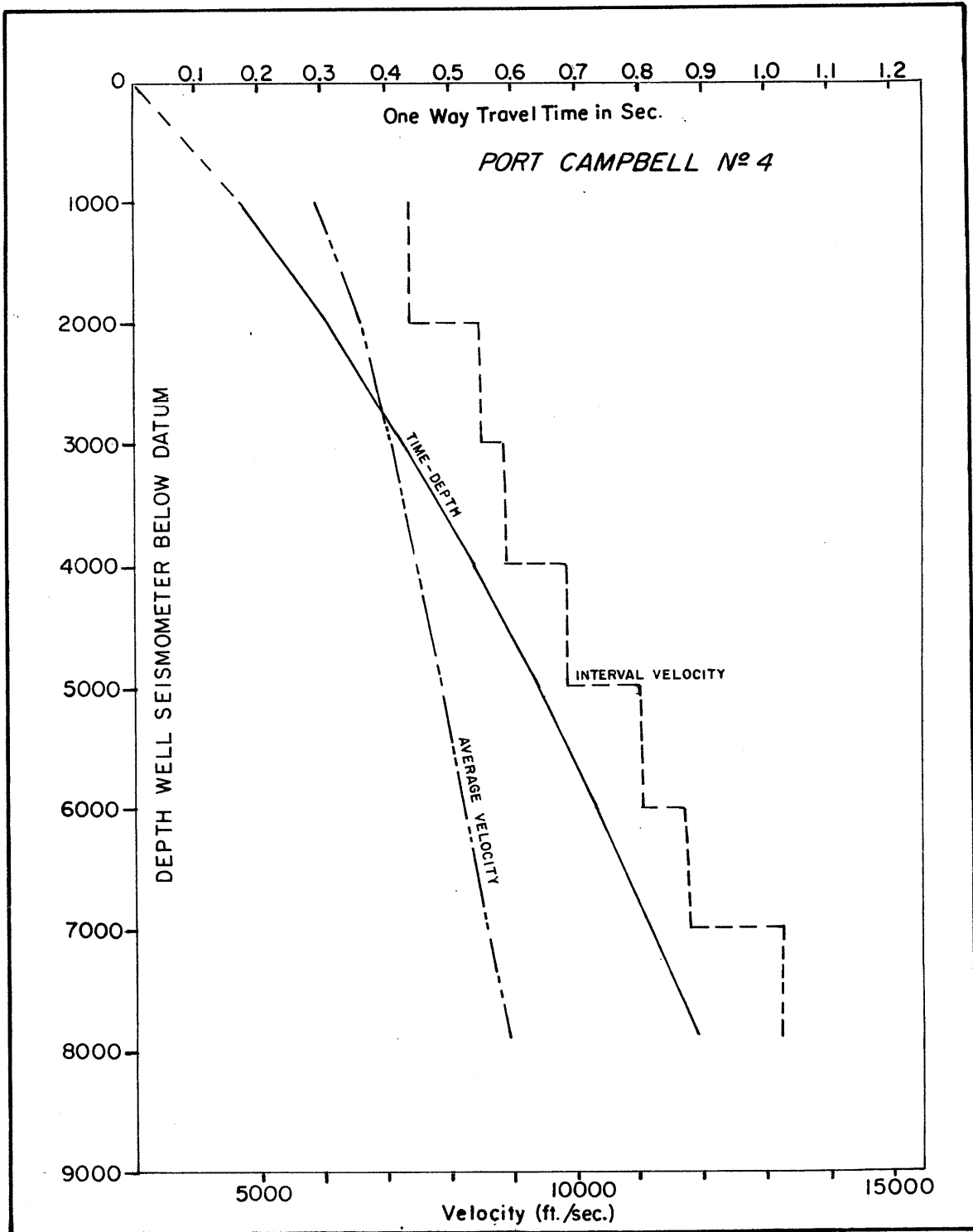


Fig. 2

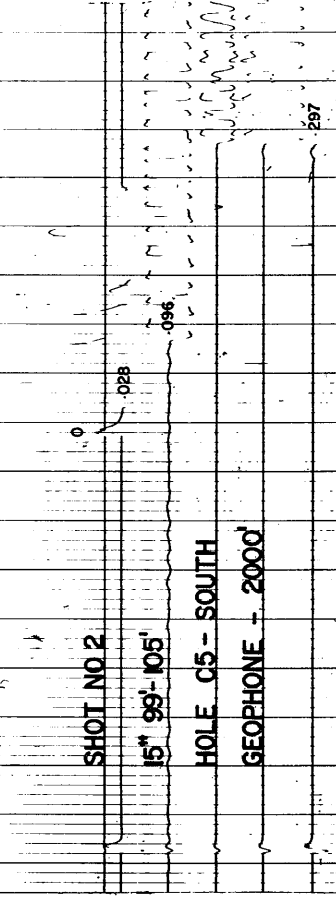
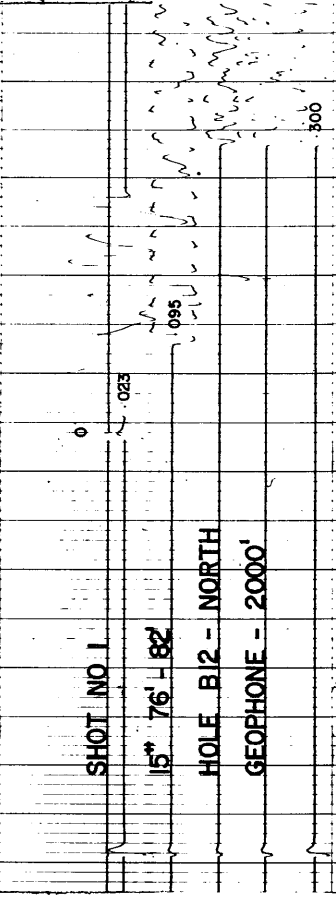
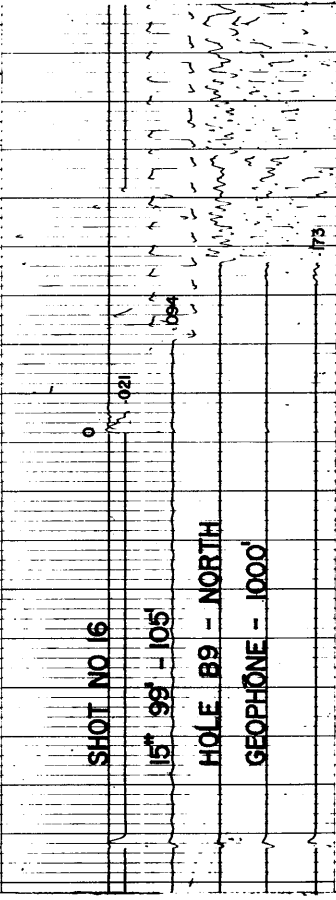
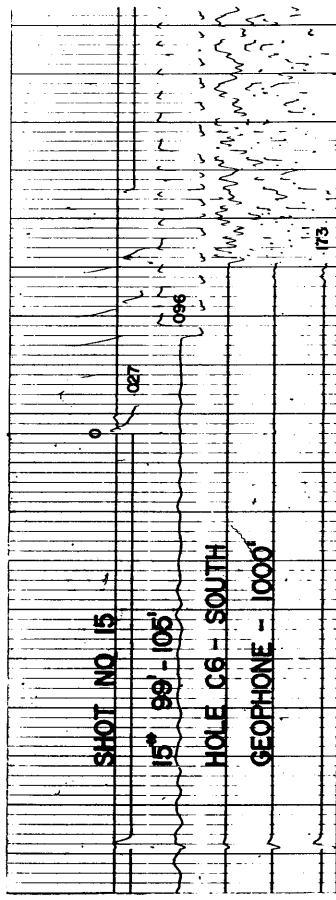
PE907168

This is an enclosure indicator page.
The enclosure PE907168 is enclosed within the
container PE907167 at this location in this
document.

The enclosure PE907168 has the following characteristics:

- ITEM_BARCODE = PE907168
- CONTAINER_BARCODE = PE907167
- NAME = Velocity Data Table
- BASIN = OTWAY
- PERMIT = PEP6
- TYPE = WELL
- SUBTYPE = DIAGRAM
- DESCRIPTION = Velocity Data Table, (Figure 4 from
Velocity Survey), by United Geophysical
Corp. for Frome-Broken Hill Co.
Pty Ltd, T.J.Greer, 6 July 1964, for
Port Campbell-4.
- REMARKS = All depths from Schlumberger
- DATE_CREATED = 6/07/64
- DATE_RECEIVED =
- W_NO = W484
- WELL_NAME = PORT CAMPBELL-4
- CONTRACTOR = UNITED GEOPHYSICAL CORP.
- CLIENT_OP_CO = FROME-BROKEN HILL COMPANY

(Inserted by DNRE - Vic Govt Mines Dept)

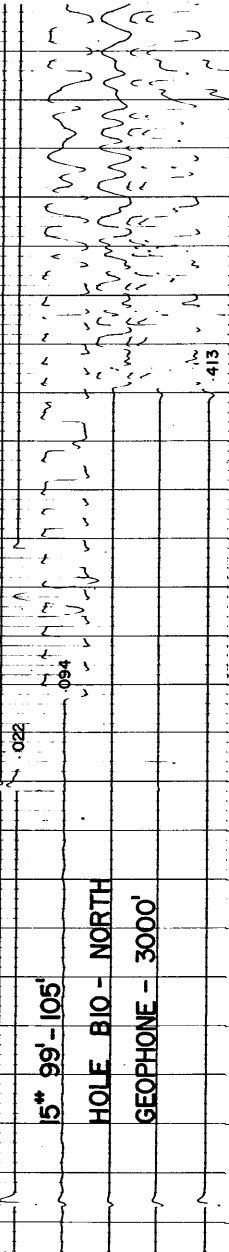


SHOT NO 13

15" 99' - 105'

HOLE B10 - NORTH

GEPHONE - 3000'

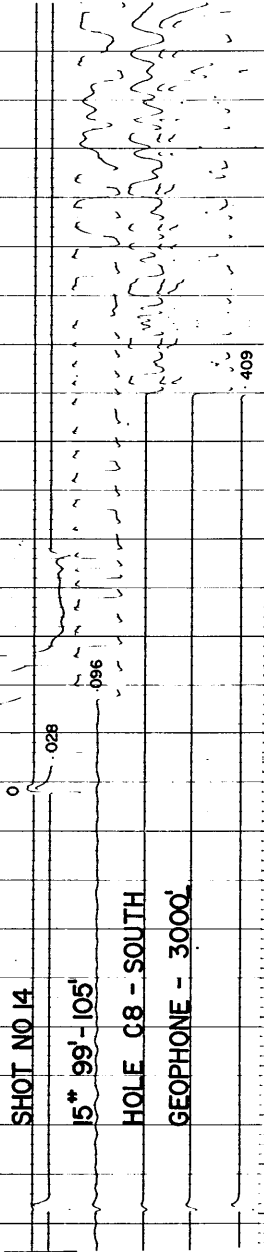


SHOT NO 14

15" 99' - 105'

HOLE C8 - SOUTH

GEPHONE - 3000'

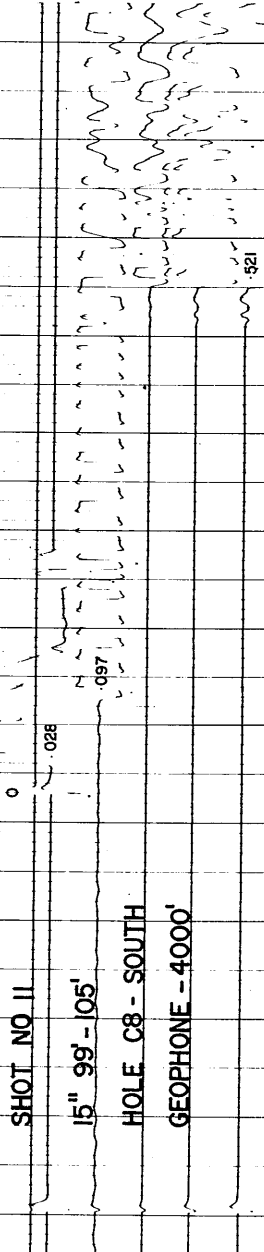


SHOT NO 11

15" 99' - 105'

HOLE C8 - SOUTH

GEPHONE - 4000'

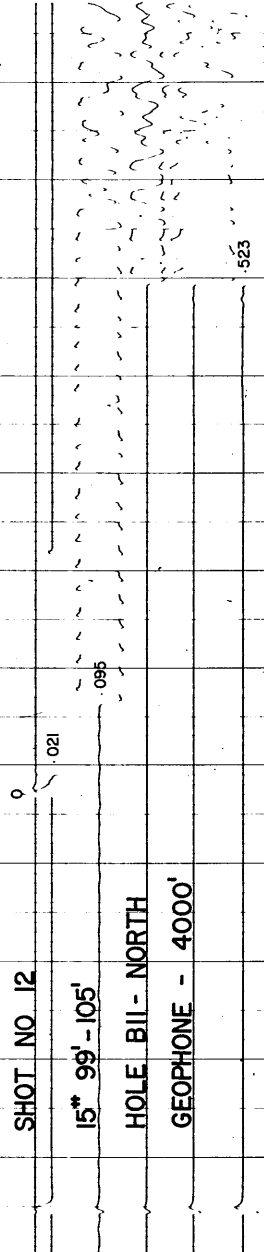


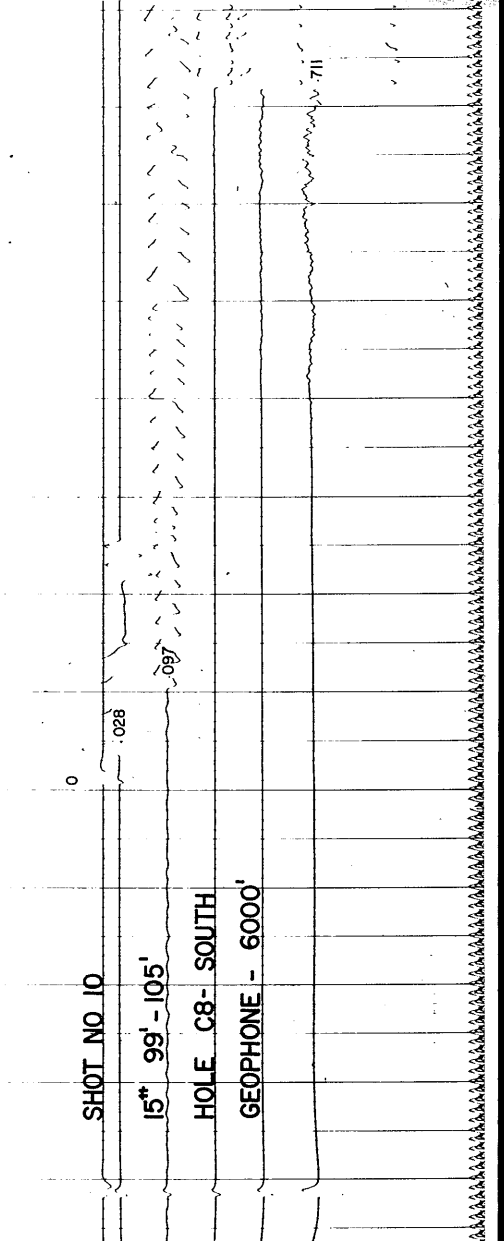
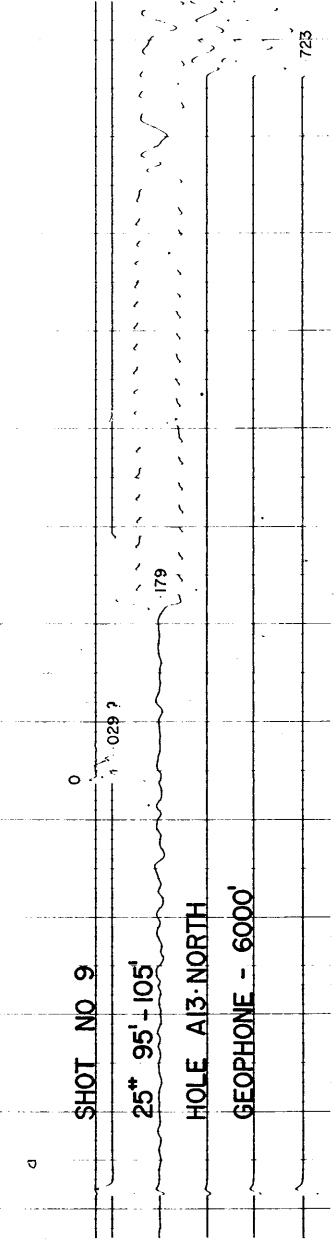
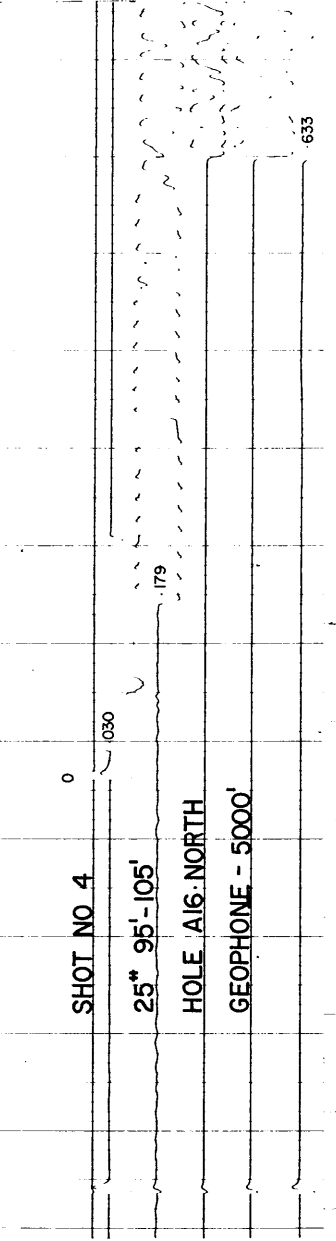
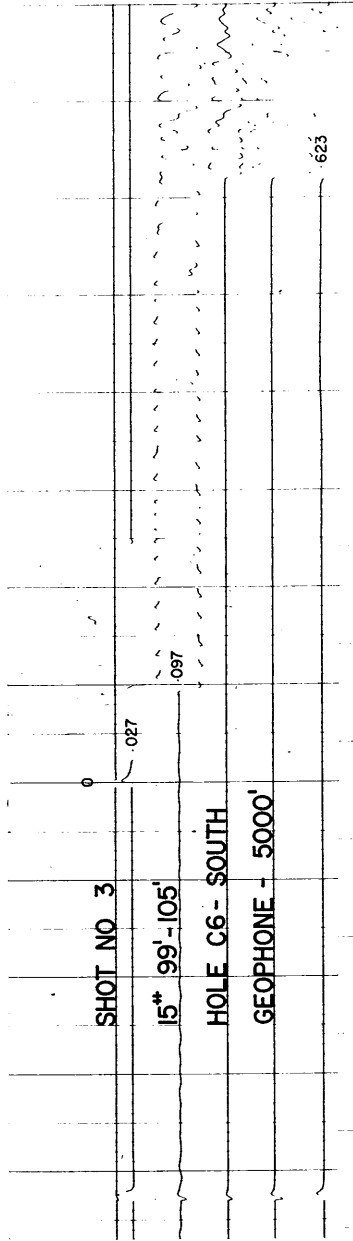
SHOT NO 12

15" 99' - 105'

HOLE B11 - NORTH

GEPHONE - 4000'



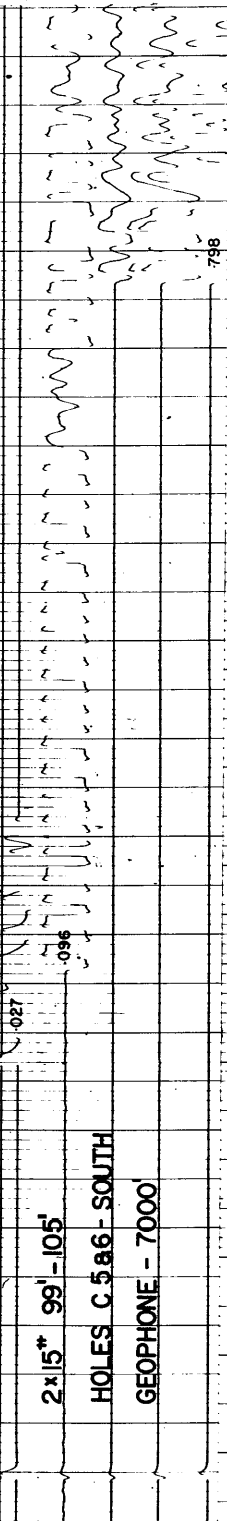


SHOT NO 7

2x15" 99'-105'

HOLES C 5 a 6 - SOUTH

GEPHONE - 7000

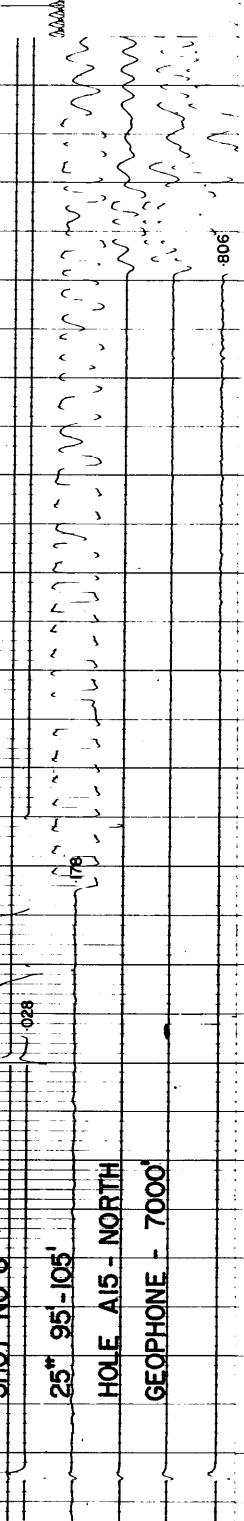


SHOT NO 8

25" 95'-105'

HOLE A15 - NORTH

GEPHONE - 7000

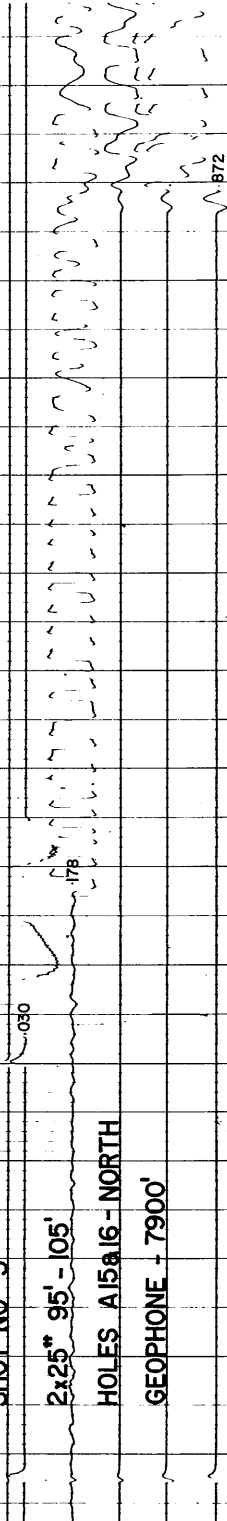


SHOT NO 5

2x25" 95'-105'

HOLES A15a16 - NORTH

GEPHONE - 7900

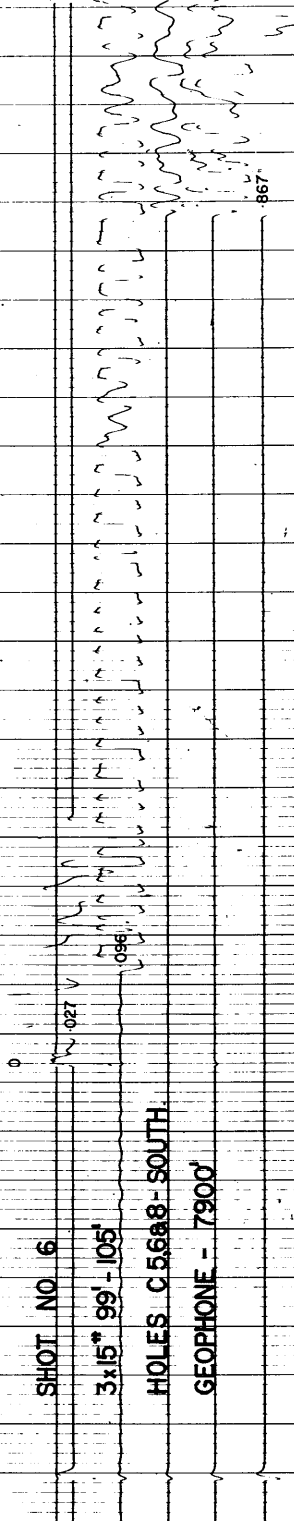


SHOT NO 6

3x15" 99'-105'

HOLES C 5 6 a 8 - SOUTH

GEPHONE - 7900



PE907169

This is an enclosure indicator page.
The enclosure PE907169 is enclosed within the
container PE907167 at this location in this
document.

The enclosure PE907169 has the following characteristics:

ITEM_BARCODE = PE907169
CONTAINER_BARCODE = PE907167
NAME = Time-Depth Curve
BASIN = OTWAY
PERMIT = PEP6
TYPE = WELL
SUBTYPE = VELOCITY_CHART
DESCRIPTION = Time-Depth Curve, (Enclosure from
Velocity Survey), United Geophysical
Corporation for Frome-Broken Hill Co.
Pty. Ltd., 6 July 1964, for Port
Campbell-4
REMARKS =
DATE_CREATED = 6/07/64
DATE_RECEIVED =
W_NO = W484
WELL_NAME = PORT CAMPBELL-4
CONTRACTOR = UNITED GEOPHYSICAL CORP.
CLIENT_OP_CO = FROME-BROKEN HILL COMPANY

(Inserted by DNRE - Vic Govt Mines Dept)