

District : Colac (1:250,000 SJ 54-12)
 Location : Lat 38°40' 20.71"S Long 143°38' 53.40"E
 Elevation : Ground 447.5m Derrick Floor 454.4m
 Total Depth : 2302m (Driller)
 Date Drilling Commenced : 5th May 1982
 Date Total Depth Reached : 13th June 1982
 Date Well Abandoned : 19th June 1982
 Drilling Time : 40 days
 Status : Plugged and abandoned

Drilled By : Richter Drilling Pty Ltd
 Mudlogging By : Exploration Logging
 Wireline Logging By : Schlumberger Seaco Inc.

Legend

- C.G. Connection Gas
- Casing Shoe
- ◄ Sidewall Core
- ◄ Sidewall Core no recovery
- Argillaceous Siltstone
- Claystone

- N.B. New Bit
- C.R. Circulate Returns
- N.R. No Returns
- T.G. Trip Gas
- Sandstone
- Silty Sandstone
- Coal

Casing		
Size (ins.)	Setting Depth	No. of Sacks
24	13m	-
13 3/8	80m	300
9 5/8	511m	500
Cement Plug		
From	To	No. of Sacks
468m	515m	75

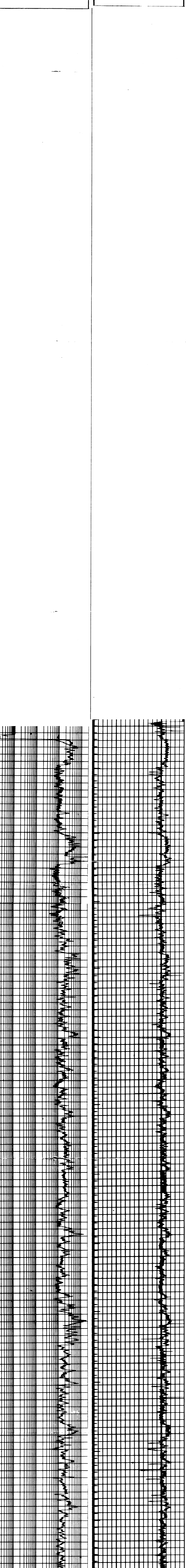
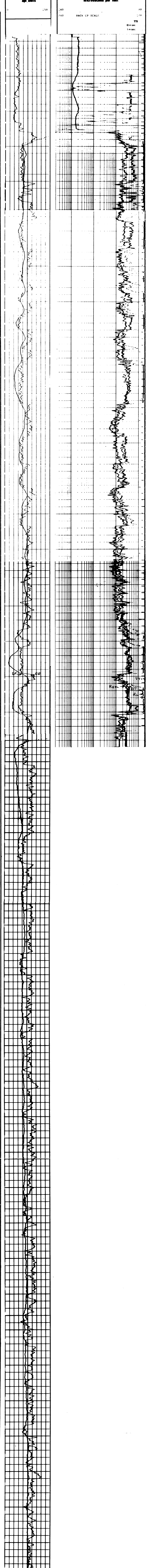
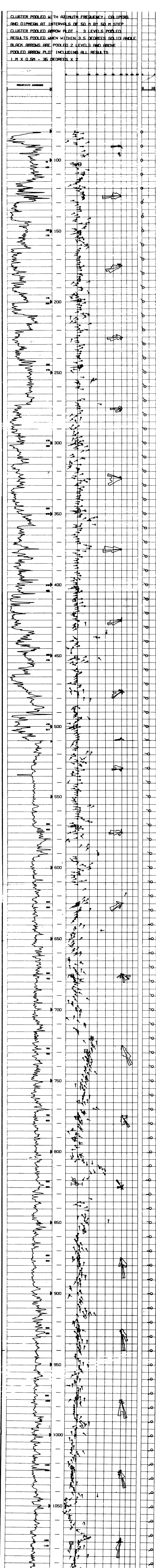
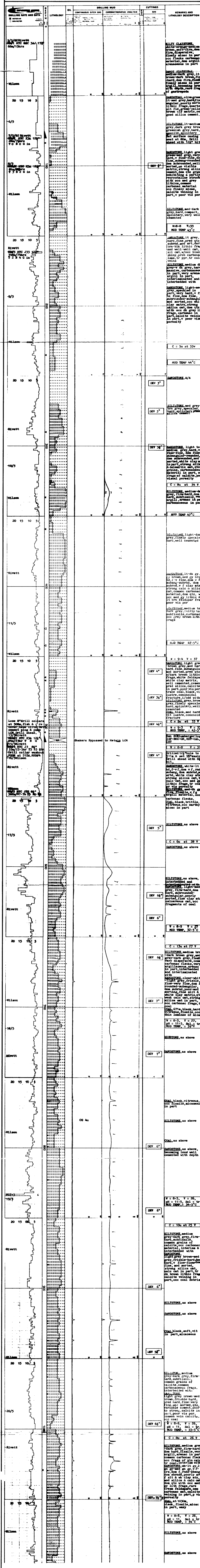
GAS & FUEL EXPLORATION N.L.

OLANGOLAH - 1
 COMPOSITE WELL LOG

OTWAY BASIN PEP 100
 SHEET 1 Vert Scale 1:1000

Compiled By : B.L. Rayner Encl. 1

CLUSTER
 Four Arm High Resolution
 Continuous Dipmeter



Interpretive Lithology	Stratigraphic Column	Remarks
	? Tertiary	
	Otway Grp	
	Eumeralla Fm	
	Albian-Aptian	
		Dominantly sandstone, silty sandstone with minor siltstone and claystone
		Dominantly siltstone with presence of coal