

COMPANY BEACH PETROLEUM N.L.  
 WELL NORTH PARAVATE # 1  
 FIELD WILD CAT  
 STATE VICTORIA

Location  
 LATITUDE 39° 33' 10" SOUTH  
 LONGITUDE 142° 57' 15" EAST

Permanent Datum SECOND LEVEL  
 Log Measured From KELLY BUSHING  
 Drilling Measured From KELLY BUSHING

Date 22ND NOV 1979  
 Run No ONE  
 Depth (m) 5033  
 Depth (ft) 16511  
 Bottom (m) 5028  
 Bottom (ft) 16493  
 Top Logged Interval 41000  
 Type Fluid in Hole VAC

SPRINGER 3P20 661  
 Density 5.5 141  
 Flowline 40 6.2

Flowline  
 2406 @ 55  
 2176 @ 65  
 2413 @ 65  
 1700 @ 2181  
 1700 @ 2280

End Conditions  
 T Logger on Bottom

Witnessed By  
 Borehole Fluids  
 HIRSHMAN

Level Bit From To  
 SURFACE 1724 531 1024  
 SURFACE 1214 2924 1364 1228  
 SURFACE 84 1364 5033

Count Record  
 From To  
 SURFACE 311  
 SURFACE 232  
 SURFACE 47.5

EQUIPMENT DATA

Run No	Logging Unit	Location	Gamma Ray Tool No	Compensated Density Tool No	Source No	Source Type	Source Stg	Tool No	Compensated Neutron Source No	Source Type	Source Stg
ONE	900-74	ROMA	4131	2293	6EV-269	6S-137	2 CURIE	9177		AI-8C	20 CURIE

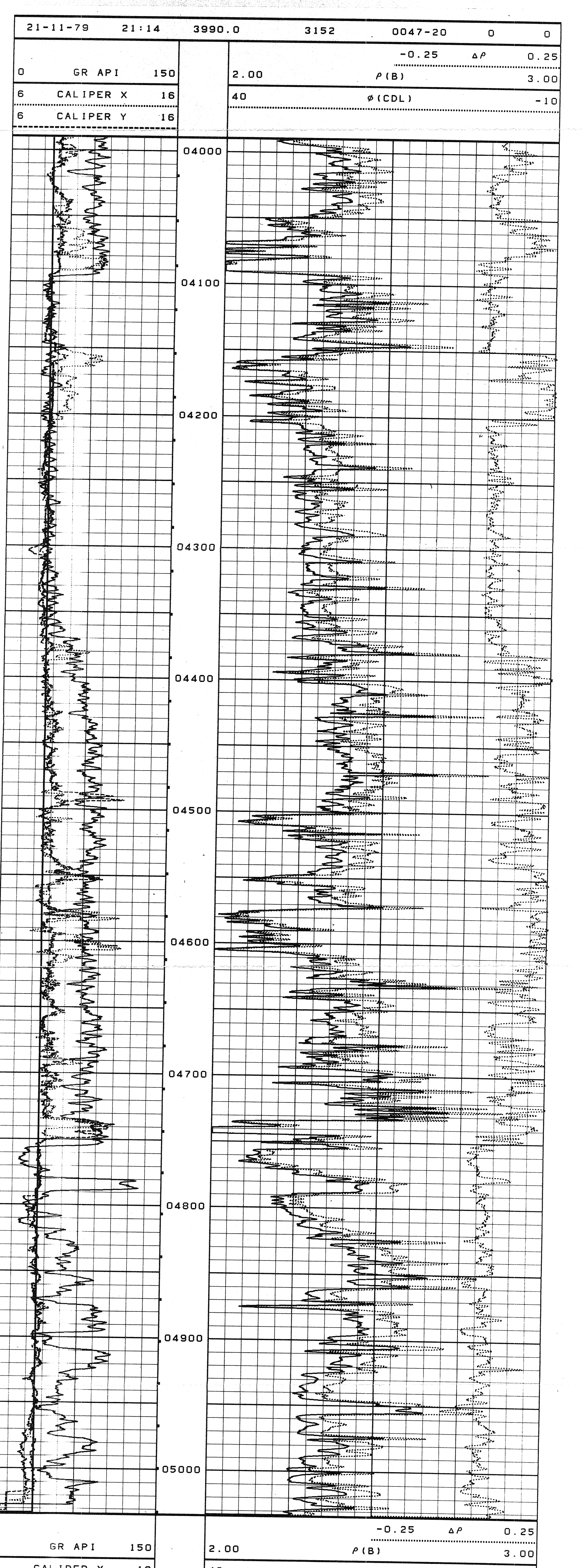
CALIBRATION DATA

Run No	Gamma Ray Bkg cps	Std cps	Magnesium LS	SS	Aluminum LS	SS	Test Block LS	SS	Caiper L Ring	S Ring	Compensated Neutron Calibrator LS	SS	L Ring	S Ring
ONE	30	140	1401.5	650.0	314.3	449.7			5802	3245			5655	3294

LOGGING DATA

Run No	Depth From	Depth To	Speed FPM	Gamma Ray T.C	API PER LOG DIV	Compensated Density T.C	Matrix Density	Fluid Density	TC	Matrix Type	Const K	Temp Grad	Salinity PPM NaCl	Surf. Temp
ONE	5032	4000	30	2	15	2	2.65	1.00	2	1	0.97	1	2300	80

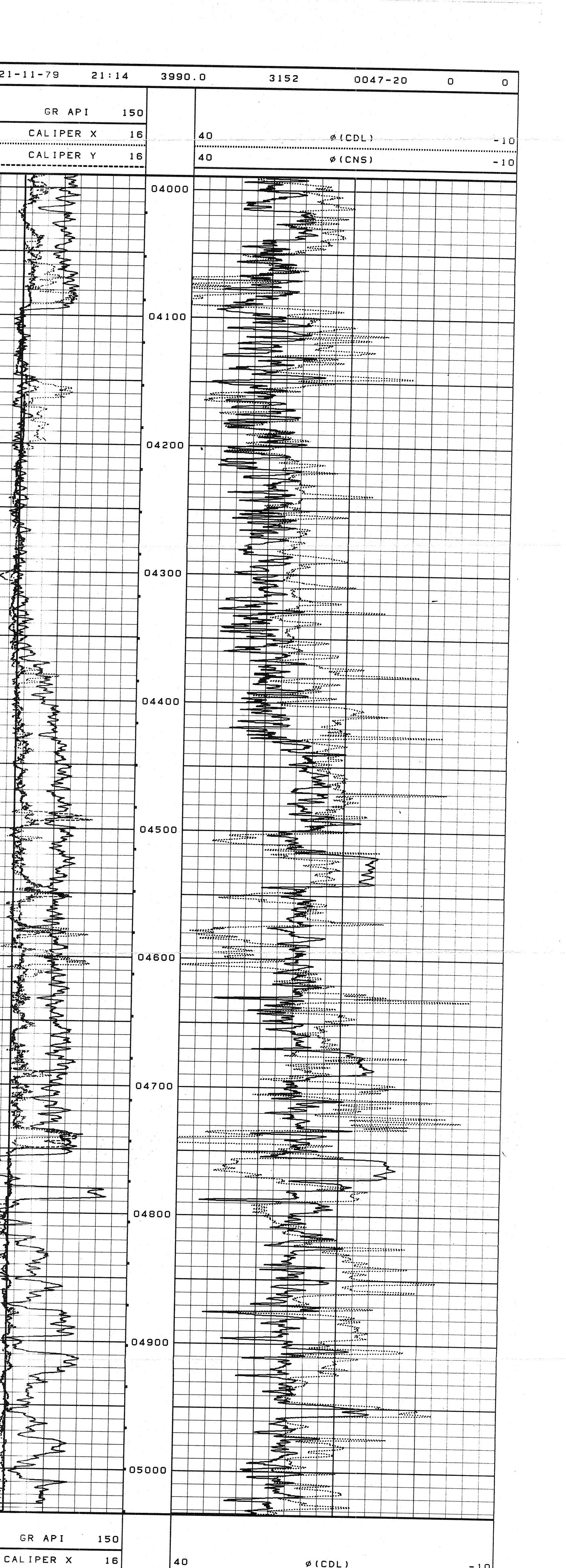
REMARKS



21-11-79 20:44 5033.0 3152 0047-20 0 0

0 GR API 150  
 6 CALIPER X 16  
 6 CALIPER Y 16

2.00 P(B)  
 40 phi(CDL)



21-11-79 20:44 5033.0 3152 0047-20 0 0

0 GR API 150  
 6 CALIPER X 16  
 6 CALIPER Y 16

40 phi(CDL)  
 40 phi(CNS)

Company BEACH PETROLEUM N.L.  
 Well NORTH PARAVATE # 1  
 Field WILD CAT  
 State VICTORIA

GO FR 5032'  
 GO TD 5033'  
 DRLR TD 5068'  
 Elev. KB 315'  
 DF 314'  
 GL 304'