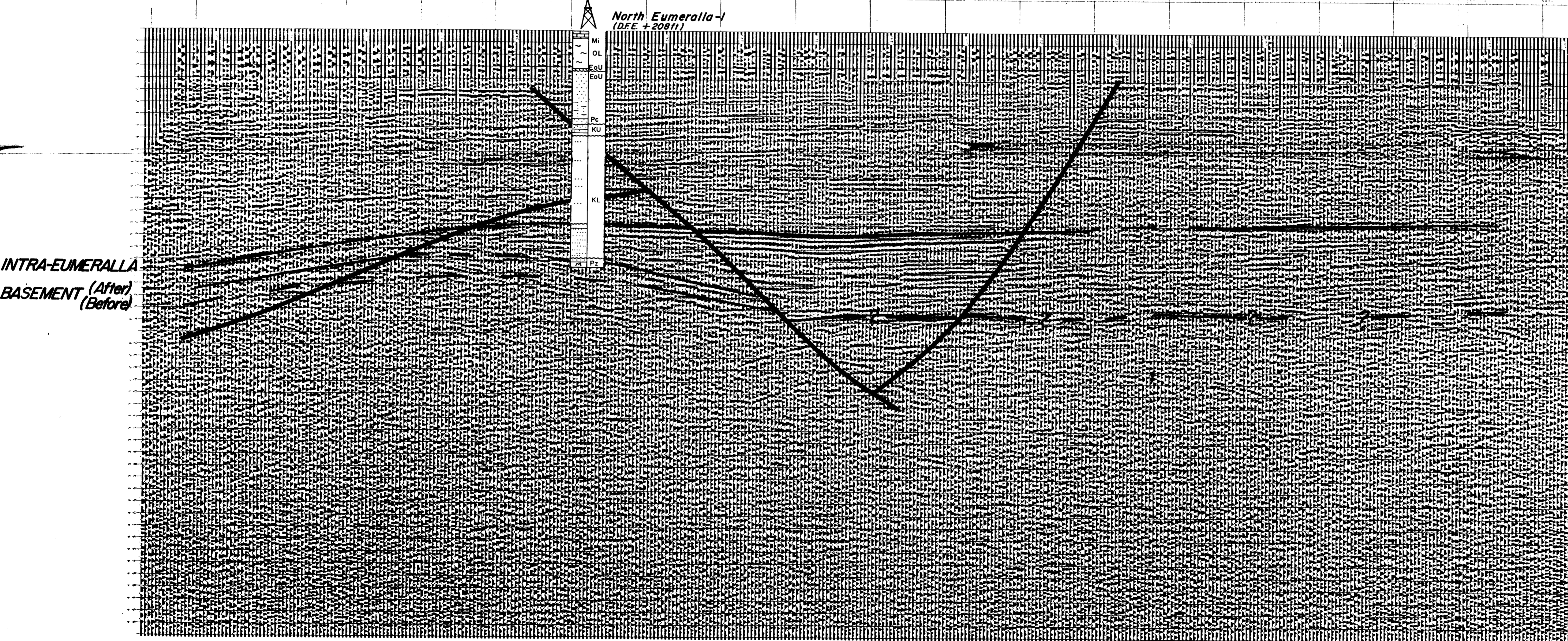


**SHELL DEVELOPMENT (AUSTRALIA) PTY. LTD.**  
**LINE: 070-041 (R)** **COMMAND**  
STATIONS: 94 TO 284  
PROSPECT: N. EUMERALLA  
PRESENTATION: DBS-FBS  
1200-DAS-IVF

RECORDING TECHNIQUE			
CREW	DATE	STACK	SPREAD
METHOD	SOURCE	INTERVAL	
INSTRUMENT	PATTERN		
FILTERS	AMPLIFIERS	GEOPHONES	
LENGTH	S. RATE	ARRAY	
DATA SEQUENCE	PROCESSING PARAMETERS		
DEMULPLEX			
A. G. C.			
DECONVOLUTION			
PREFILTER			
GATHER			
STATICS			
STACK			
DECONVOLUTION			
FILTER			
SECTION			
HPR MAY			



\*\*\*\*\* RECEIVED CASE: 070-041 (R) \*\*\*\*\*  
DUPLICATE OF 070-041 (R)  
\*\*\*\*\* RECEIVED CASE: 070-041 (R) \*\*\*\*\*  
DUPLICATE OF 070-041 (R)  
\*\*\*\*\* RECEIVED CASE: 070-041 (R) \*\*\*\*\*  
DUPLICATE OF 070-041 (R)  
\*\*\*\*\* RECEIVED CASE: 070-041 (R) \*\*\*\*\*  
DUPLICATE OF 070-041 (R)  
\*\*\*\*\* RECEIVED CASE: 070-041 (R) \*\*\*\*\*  
DUPLICATE OF 070-041 (R)  
\*\*\*\*\* RECEIVED CASE: 070-041 (R) \*\*\*\*\*  
DUPLICATE OF 070-041 (R)  
\*\*\*\*\* RECEIVED CASE: 070-041 (R) \*\*\*\*\*  
DUPLICATE OF 070-041 (R)  
\*\*\*\*\* RECEIVED CASE: 070-041 (R) \*\*\*\*\*  
DUPLICATE OF 070-041 (R)  
\*\*\*\*\* RECEIVED CASE: 070-041 (R) \*\*\*\*\*  
DUPLICATE OF 070-041 (R)  
\*\*\*\*\* RECEIVED CASE: 070-041 (R) \*\*\*\*\*  
DUPLICATE OF 070-041 (R)  
\*\*\*\*\* RECEIVED CASE: 070-041 (R) \*\*\*\*\*  
DUPLICATE OF 070-041 (R)  
\*\*\*\*\* RECEIVED CASE: 070-041 (R) \*\*\*\*\*  
DUPLICATE OF 070-041 (R)  
\*\*\*\*\* RECEIVED CASE: 070-041 (R) \*\*\*\*\*  
DUPLICATE OF 070-041 (R)

**SHELL DEVELOPMENT (AUSTRALIA) PTY. LTD.**  
OTWAY BASIN PEP 5  
**NORTH EUMERALLA AREA**  
**INTERPRETED SEISMIC LINE**  
**071-041 (R) SP. 94-284**  
Scale 1:1  
Author: S. Aust. Team Date: April 1974  
Report No: SDA 182 Drawing No: 7886 **Encl. 9**

Cal. of 070-041 (R)