

DEPT. NAT. RES. & ENV.  
PE000875

QUICK LOOK INTERPRETATION  
1:200

COMPANY GAS AND FUEL EXPLORATION N.L.  
WELL NALANGIL-1  
FIELD WILDCAT  
PROVINCE/COUNTY VICTORIA  
COUNTRY/STATE AUSTRALIA  
PERMIT NUMBER PEP 100  
LOCATION PEP 100  
OTHER SERVICES NCS, CIS, SCC

PREPARMENT DATUM M.S.L.  
LOCATION PEP 100  
LOG MEASURED FROM K.B. K.B.  
DATE LOGGING RESUMED 25/01/90  
RUN NUMBER 007  
DEPTH-DRILLER 363.0 M  
DEPTH-LOGGER 392.0 M  
FIRST READING 200.0 M  
LAST READING 305.0 M  
CASING-DRILLER 64.24 M  
CASING-LOGGER 64.24 M  
HOLE FIELD TYPE 633 INS  
DENS./VISC 4.9 G/CM3/47  
PH/LIQUID LOSS FLOWLINE  
SAMPLE SOURCE 1.0  
RM @ MEAS TEMP 2.68 @ 25C  
RMC @ MEAS TEMP 3.02 @ 25C  
SOURCE: PREP/REC PRESS 1 PRESS  
TIME STAMP 2.09 @ 25C  
MAX REC TEMP 4.95  
EQUIPMENT/BASE VISO 1 BR13  
RECORDED BY R.L. TINGH  
WITNESSED BY J. FOSTER  
ON BOTTOM 14.00 HRS

BOREHOLE RECORD		CASING RECORD	
RUN NUMBER	BIT FROM TO	SIZE	WEIGHT FROM TO
ONE	8.5 INS CSC. SHOE	T.D.	9 5/8 INS SURFACE CSC. SHOE

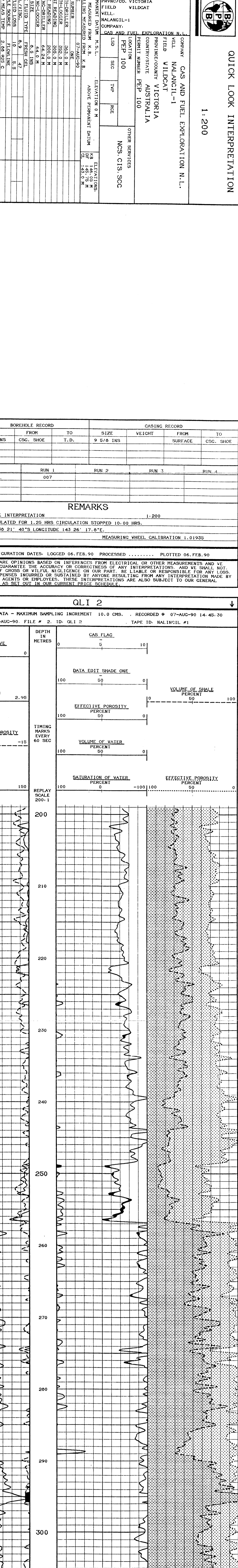
EQUIPMENT	RUN 1	RUN 2	RUN 3	RUN 4
LSU	007			

REMARKS  
QUICK LOOK INTERPRETATION 1:200  
WELL CIRCULATED FOR 1.25 HRS CIRCULATION STOPPED 10.00 HRS.  
LATITUDE 38 21' 40" S LONGITUDE 143 26' 17.8" E.  
MEASURING WHEEL CALIBRATION 1.01935  
SYSTEM CONFIGURATION DATES: LOGGED 06.FEB.90 PROCESSED ..... PLOTTED 06.FEB.90

ALL INTERPRETATIONS ARE OPINIONS BASED ON INFERENCE FROM ELECTRICAL OR OTHER MEASUREMENTS AND WE CANNOT AND DO NOT GUARANTEE THE ACCURACY OR CORRECTNESS OF ANY INTERPRETATIONS. AND WE SHALL NOT BE LIABLE OR RESPONSIBLE FOR ANY LOSS, COSTS, DAMAGES OR EXPENSES INCURRED OR SUSTAINED BY ANYONE RESULTING FROM ANY INTERPRETATION MADE BY ANY OF OUR OFFICERS, AGENTS OR EMPLOYEES. THESE INTERPRETATIONS ARE ALSO SUBJECT TO OUR GENERAL TERMS AND CONDITIONS AS SET OUT IN OUR CURRENT PRICE SCHEDULE.

QLI 2

DEPTH BASED DATA - MAXIMUM SAMPLING INCREMENT 10.0 CMS. RECORDED @ 07-AUG-90 14:45:30  
PLOTTED ON 22-AUG-90. FILE # 2. ID. QLI 2 TAPE ID: NALINGIL #1



DEPTH BASED DATA - MAXIMUM SAMPLING INCREMENT 10.0 CMS. RECORDED @ 07-AUG-90 14:45:30  
PLOTTED ON 22-AUG-90. FILE # 2. ID. QLI 2 TAPE ID: NALINGIL #1

BEFORE SURVEY CALIBRATION

SONDE SERIAL NUMBERS

QLI:

INDETERMINATE SHALE OTHER MINERALS MOVEABLE HYDROCARBONS HYDROCARBONS POROSITY

FASTLOOK EVALUATION SHALY ANALYSIS ANALYSIS CONSTANTS

SIMANDOUX EQUATION

START DEPTH	305.000	METRES
MATRIX TYPE	SAND	
MATRIX DENSITY	2.650	GRAMS PER CC
RESISTIVITY OF WATER	6.000	OHM-M
RESISTIVITY MUD FILTRATE	3.020	OHM-M
MATRIX NEUTRON POROSITY	0.030	LIME POR UNITS
FLUID DENSITY	1.000	GRAMS PER CC
SHALE DENSITY	2.200	GRAMS PER CC
RESISTIVITY SHALE	5.000	OHM-M
SHALE NEUTRON POROSITY	0.450	LIME POR UNITS
GAMMA CURVE MINIMUM	20.000	API
GAMMA CURVE MAXIMUM	120.000	API
A	0.620	
M	2.150	

INTERPRETATION CURVE BOUNDARIES		
DLL	1.000	100.000 OHM-M
MLL	1.000	100.000 OHM-M
CRCL	0.000	150.000 API
NPOR	-15.000	60.000 PERCENT
DEN	1.500	2.950 GRAMS PER CC

COMPANY GAS AND FUEL EXPLORATION N.L.

WELL NALANGIL-1

FIELD WILDCAT

PROVINCE/COUNTY VICTORIA

COUNTRY/STATE AUSTRALIA