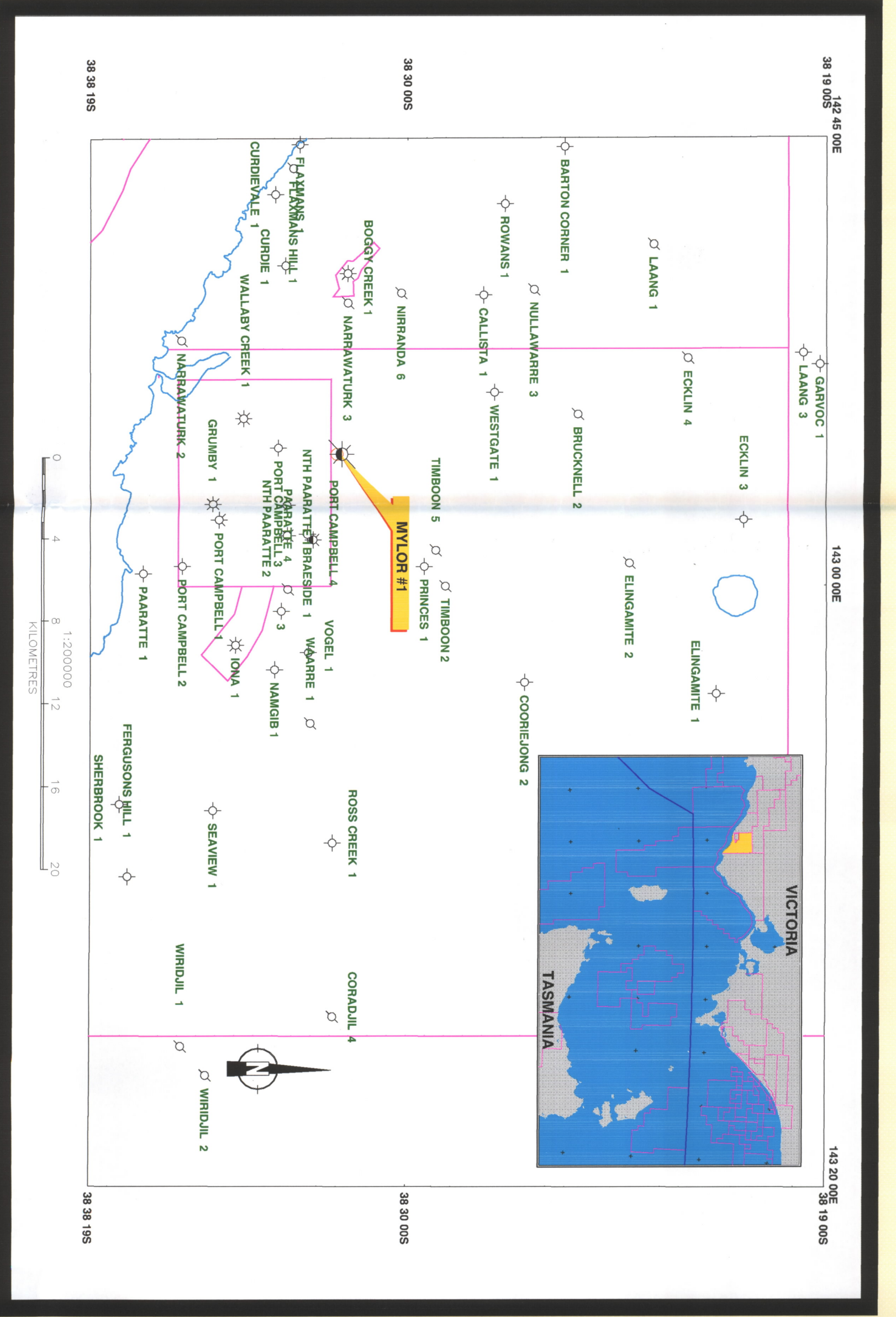


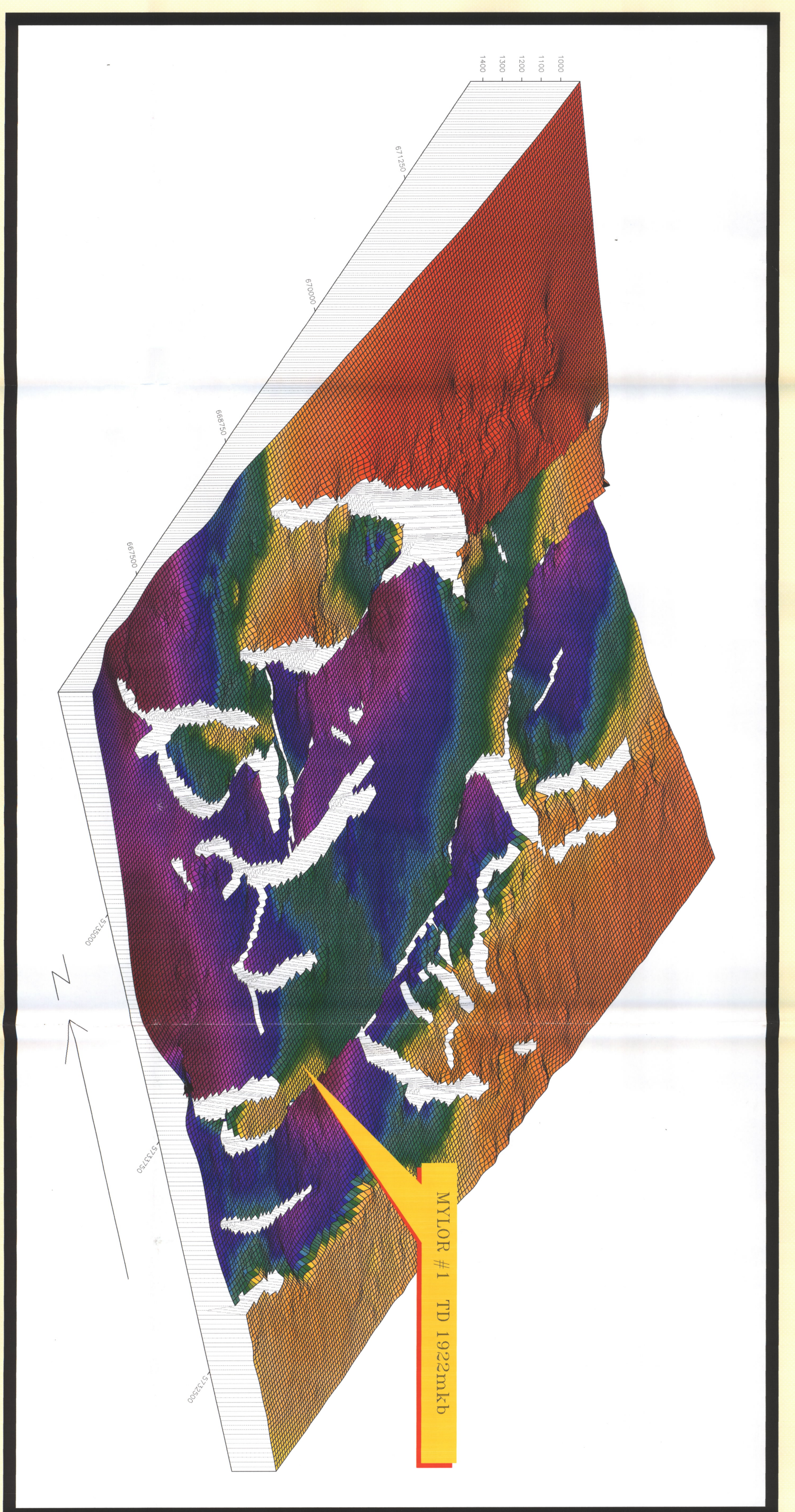


PEP-108 VIC
MYLOR #1

LOCATION	SERVIC LINE 2905, TRACK 1795, WAARRE 1D
DEPT/DATE FROM/TO	3.5 km NW of WAARRE #1
PRODUCTION FACILITIES	103.2m
KB	103.2m
T.D.	103.2m
PRIMARY TARGET	WAARRE ST 7, 167.5-180M
SECONDARY TARGET	REBELLA ST 1, 178-180M
TRAP	REBELLA ANTICLINE
SOURCE	BELEST MUDSTONE 138.5 m, FLAMANS 205.5 m
HYDROCARBONS ENCOUNTERED	REBELLA FERTILIZATION
CLOSURE AREA AT/C	GAS CONDENSATE OIL
VERTICAL CLOSURE	1.07 km
GROSS THROCCARBON COLUMN	63.8 m
NITROGEN	795
PERCENT	19%
1-SM	73%
APR/06/11	61.9

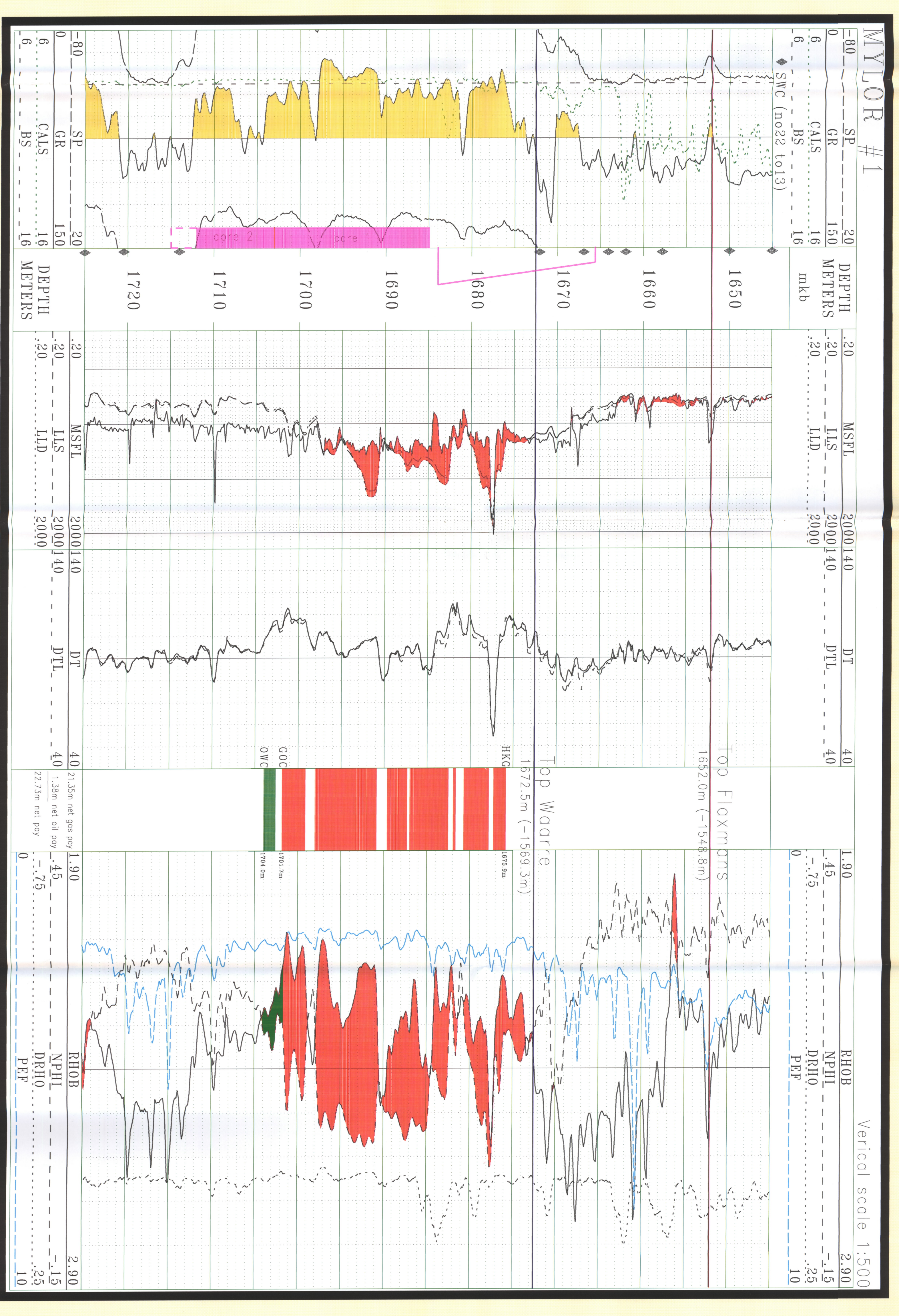


MYLOR DISCOVERY MONTAGE

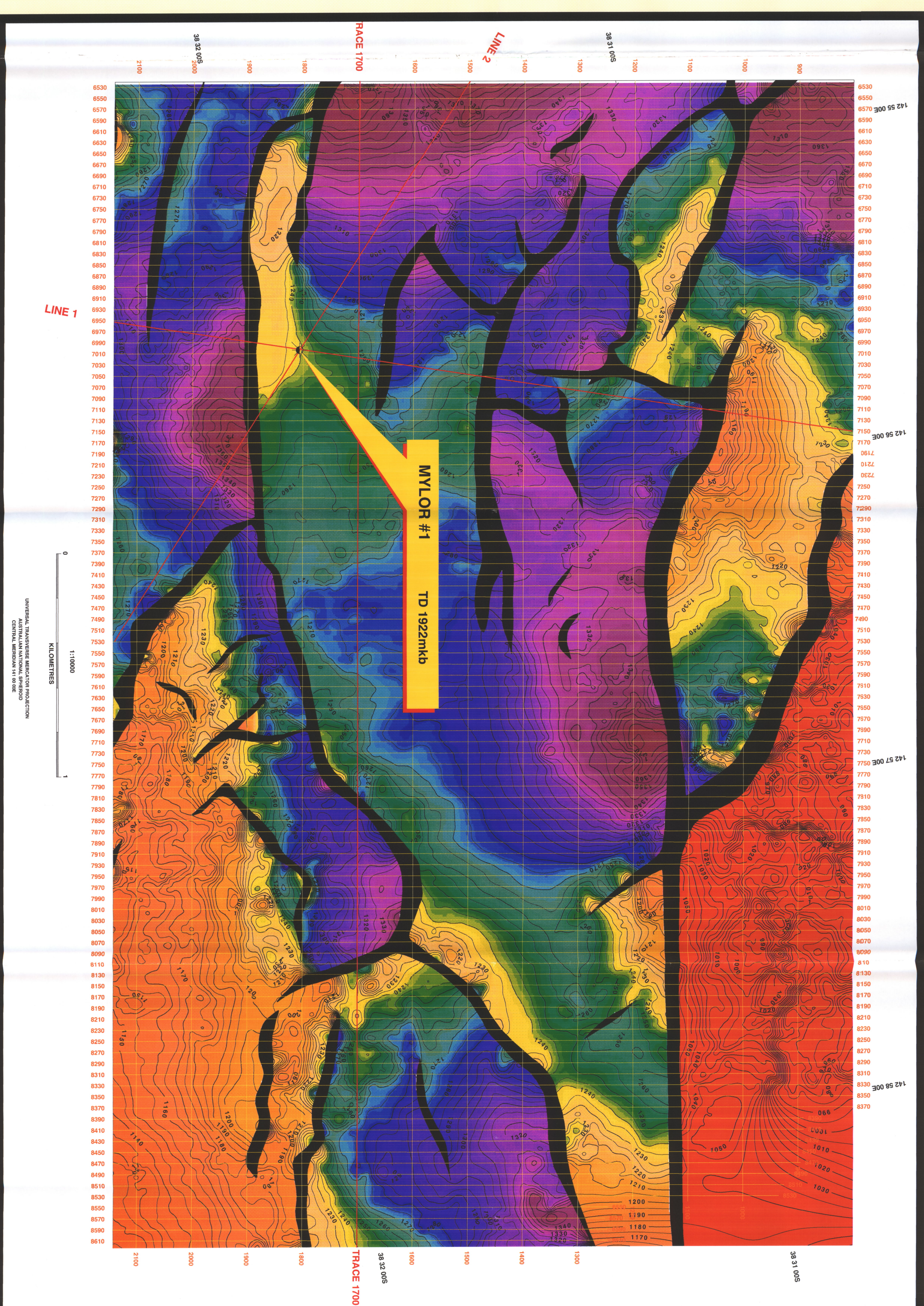


3D MESH DISPLAY

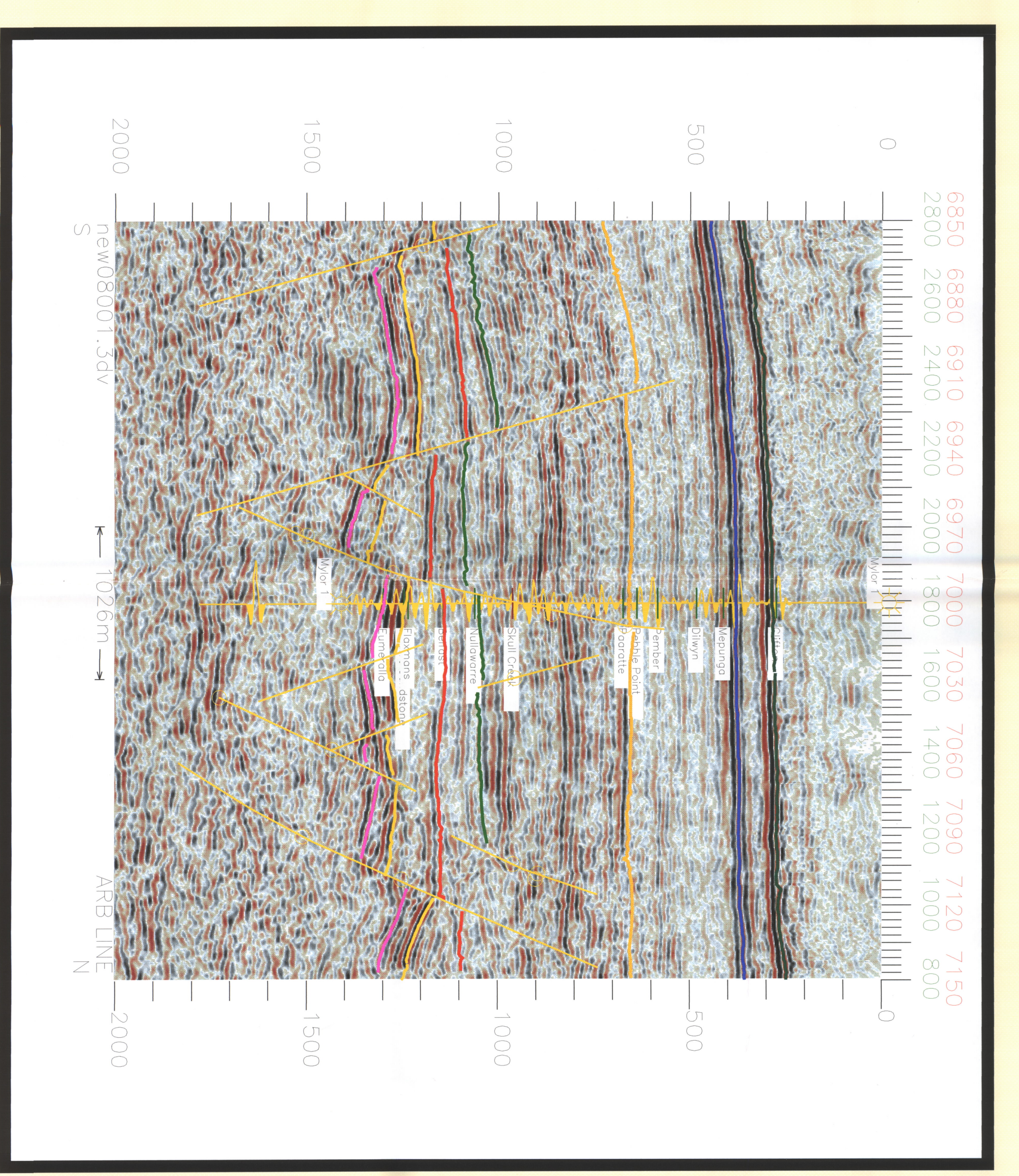
REGIONAL LOCATION MAP



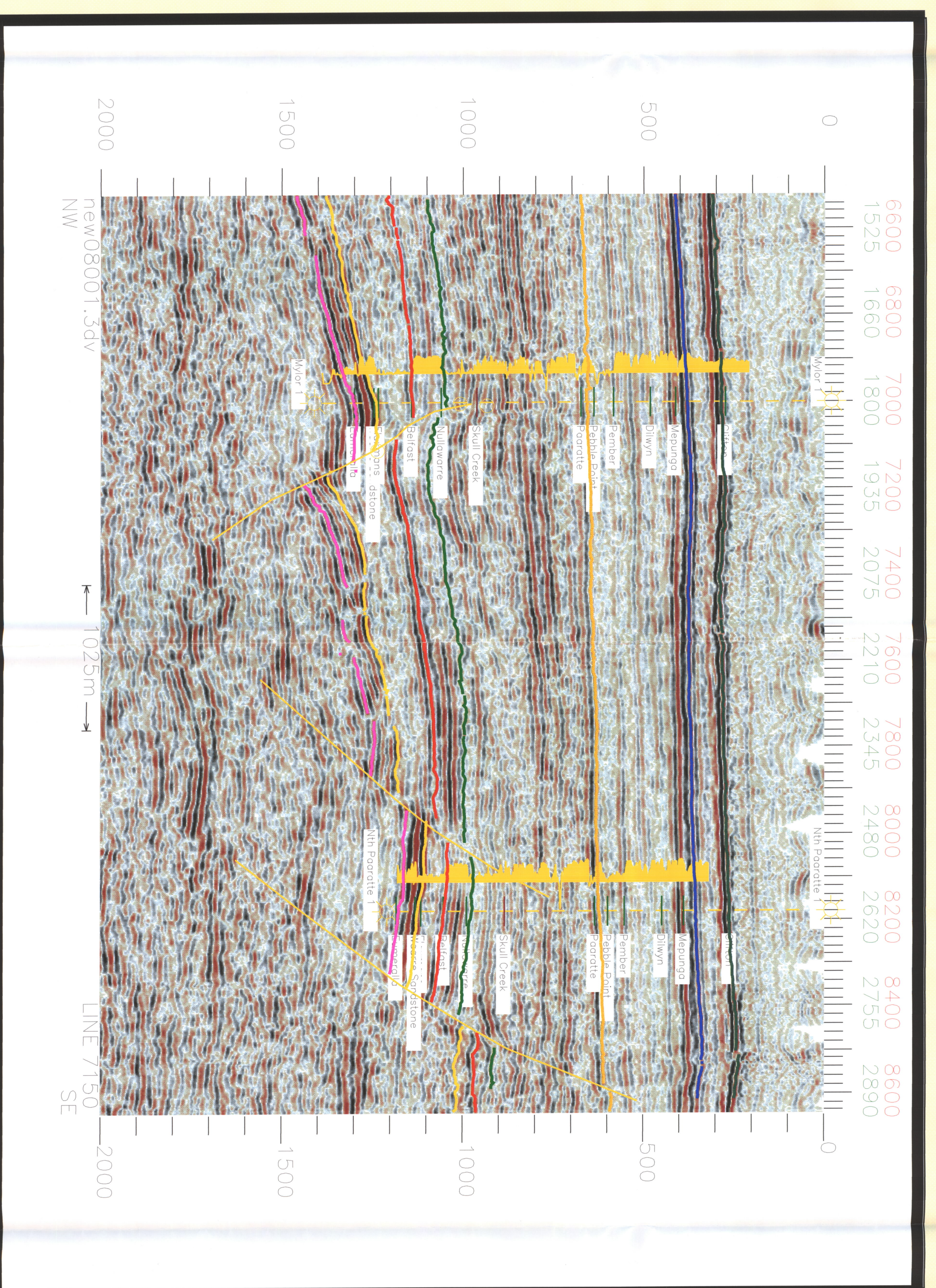
MYLOR LOG DISPLAY



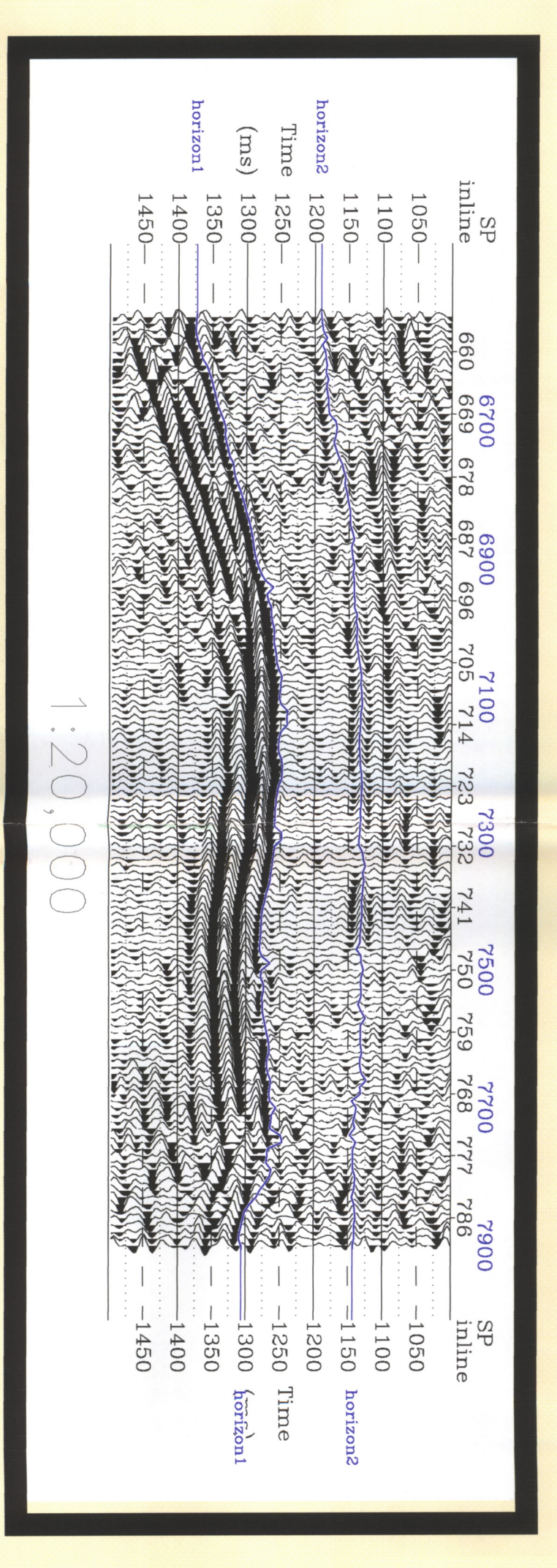
TOP WAARRE TWT MAP



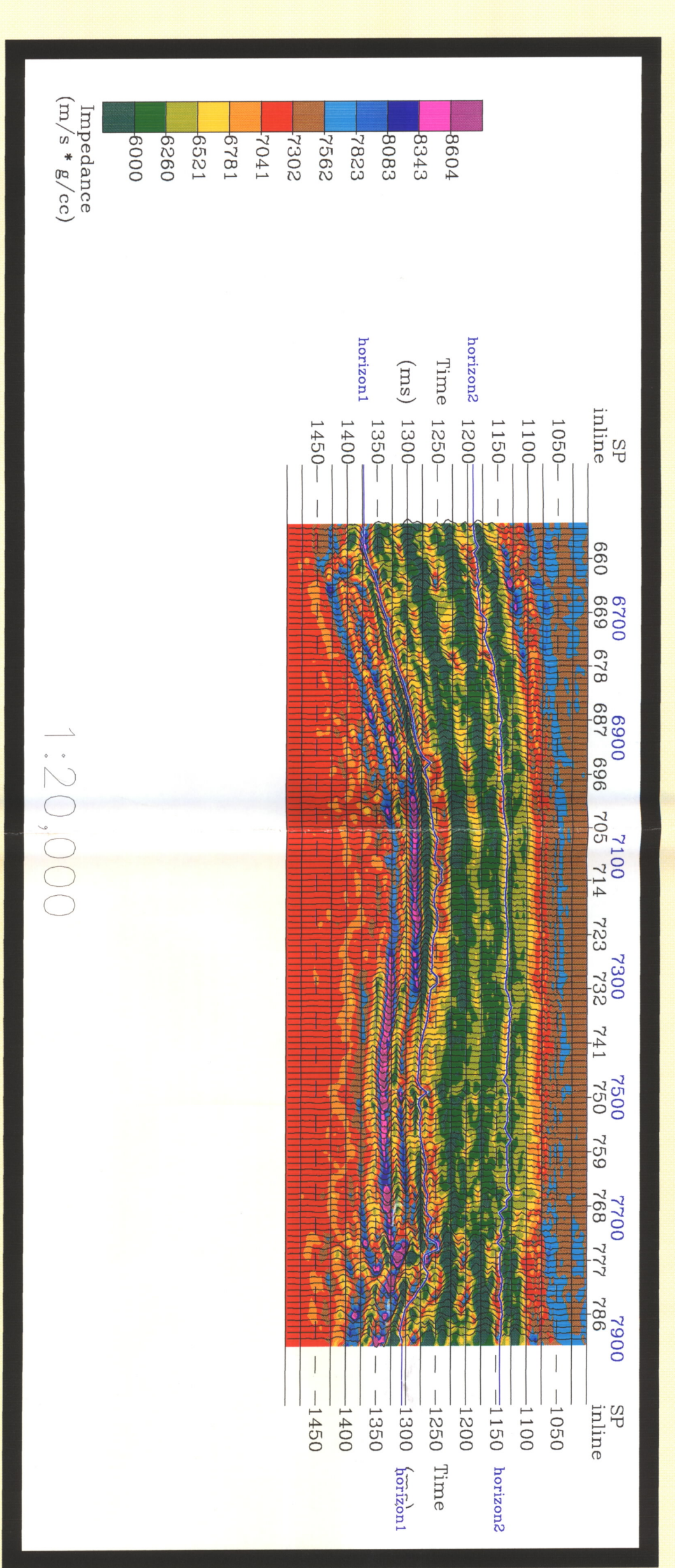
LINE 1



LINE 2



TRACE 1700
WIGGLE DISPLAY



TRACE 1700
IMPEDANCE
DISPLAY