

COMPANY SHELL DEVELOPMENT PTY. LTD.
WELL MOYNE FALLS 1
FIELD WILDCAT OTWAY BASIN, PE 600523
COUNTY AUSTRALIA STATE VICTORIA

LOCATION LATITUDE 38° 04' 09" S
 LONGITUDE 142° 11' 36" E
Other Services: BHCR, CDH.

Permanent Datum: NSL Elev. 0
Log Measured From: RT 487.5ft. Above Perm. Datum
Drilling Measured From: RT 12.5ft. Above GL
 Elev.: K.B. 14.0 @ GL
 D.F. 12.5 @ GL
 G.L. 475

Date: 24 NOV 69
Run No.: 1
Depth-Driller: 2833
Depth-Logger: 2815
Top Log Interval: 1271
Casing-Driller: 9578 @ 1270
Casing-Logger: 1271
Bit Size: 8 3/4
Type Fluid in Hole: FRESH WATER
Dens. Visc.: 9.8 38
PH Fluid Loss: 8.1 10 ml
Source of Sample: FLOWLINE
Rm @ Meas. Temp.: 3.50 @ 86 °F
Rmf @ Meas. Temp.: 3.19 @ 70 °F
Rmc @ Meas. Temp.: 3.71 @ 70 °F
Source Rmt. Rmc: PRESS. PRESS.
Rm @ BHT: 2.75 @ 116 °F
Rmf @ BHT: 3 HRS.
Rmc @ BHT: 5 HRS.
Max. Rec. Temp.: 45.22 SAT.
Equip. Location: 4522 SAT.
Recorded By: N. KERVILL, N. AFFLECK, B. THOMSON, N. AFFLECK
Witnessed By: J. VEENEMA, J. POLE, J. VEENEMA, J. POLE

FOLD HERE The well name, location and borehole reference data were furnished by the customer.

REMARKS

Changes in Mud Type or Additional Samples

Date Sample No.

Depth-Driller

Type Fluid in Hole

Dens. Visc. Fluid Loss

Source of Sample

Rm @ Meas. Temp.

Rmf @ Meas. Temp.

Rmc @ Meas. Temp.

Source Rmt. Rmc

Rm @ BHT

Rmf @ BHT

Rmc @ BHT

Run No.: 1 2

C.D.:

S.O.: 1 1/2" 1 1/2"

Equip. PANEL No.: IRP-L 754 IRP-L 754

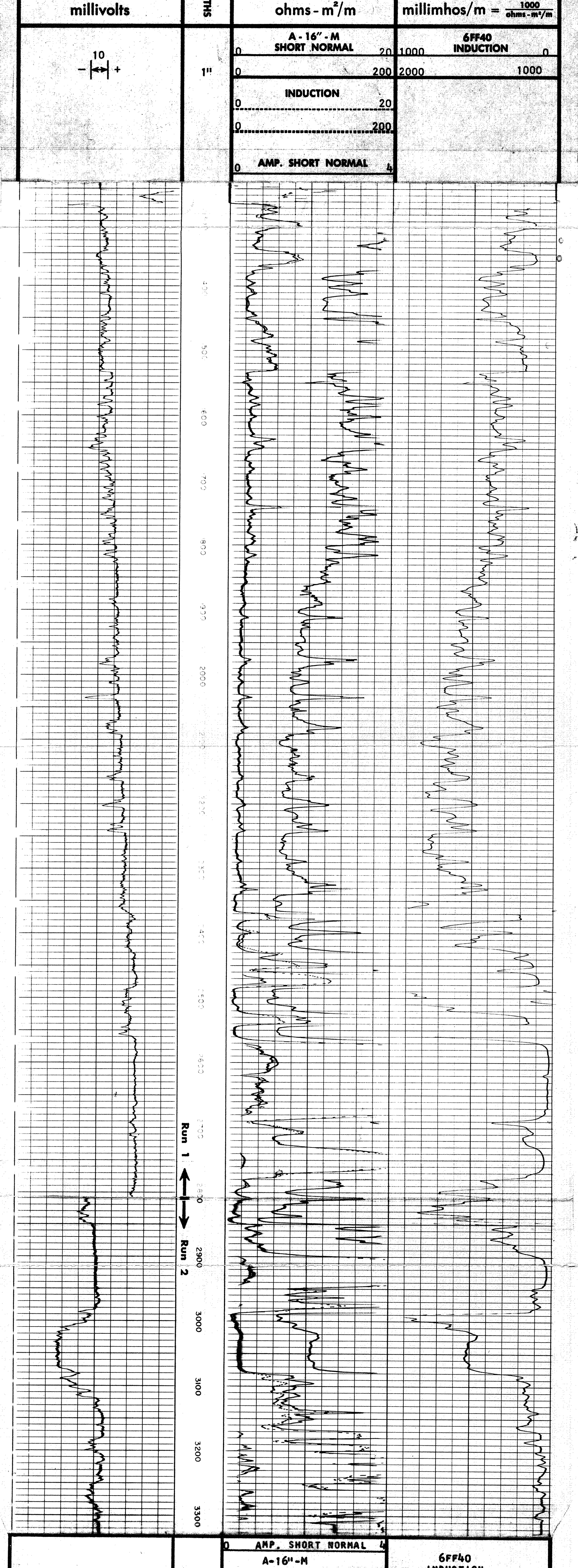
Used: CART. No.:

SONDE No.: IRS-M 374 IRS-M 374

IAP No.: MMP-B 210 MMP-B 210

S.B.R.: 1

Check one, filling in blanks where applicable:
 Surface determined sonde errors used for 6FF40.
 6FF40 sonde error corrected for _____ inch
 borehole signal at Rm = _____
 6FF40 zero set in hole at depth of _____ feet.



SPONTANEOUS POTENTIAL 100 MILLIVOLTS

RESISTIVITY OHMS-M²/M

CONDUCTIVITY MILLIMHOS/M = 1000 / OHMS-M²/M

COMPANY SHELL DEVELOPMENT PTY. LTD.
WELL MOYNE FALLS 1
FIELD WILDCAT OTWAY BASIN
COUNTY AUSTRALIA STATE VICTORIA

Rm _____ °F
Rmf _____ °F
Rmc _____ °F
BHT _____ °F

SCHL FR 3311
SCHL TD 3312
DRLR TD 3306
Elev. KB 487.5
DF GL 475

