

PLATE 1a: Photomicrograph of a phytoclast in shale. The plant tissue is composed of telovitrinite (V: mid-grey) and resinite (R: brown) [Sample A-923.184, 64.2m, oil immersion, reflected light, X32].

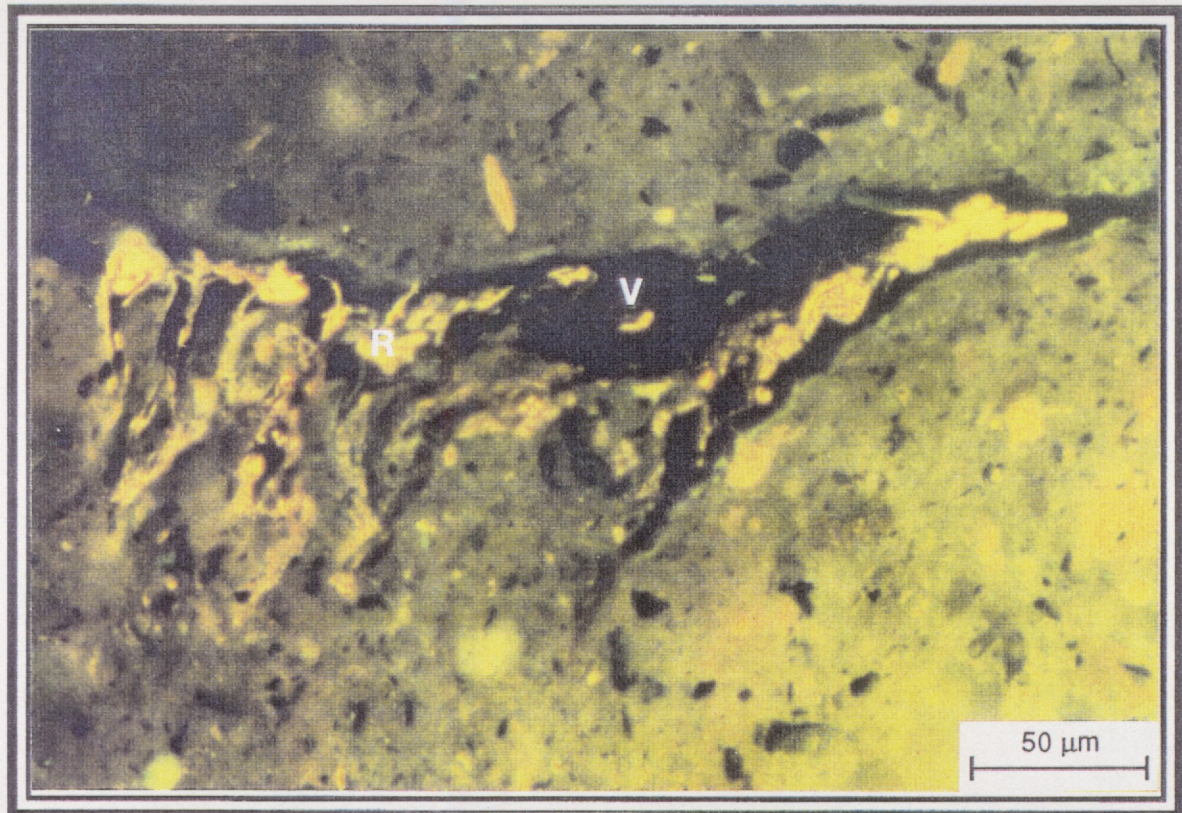


PLATE 1b: Photomicrograph of a phytoclast in shale. The plant tissue is composed of telovitrinite (V: black) and resinite (R: yellow) [Sample A-923.184, 64.2m, oil immersion, UV light, X32].