

Plate 5: 792.0 metres Reflected Light
 Organic matter in this silty shale consists largely of
 vitrinite (grey), inertinite (white) and exinite (brown).
 Field dimensions 0.26 x 0.18

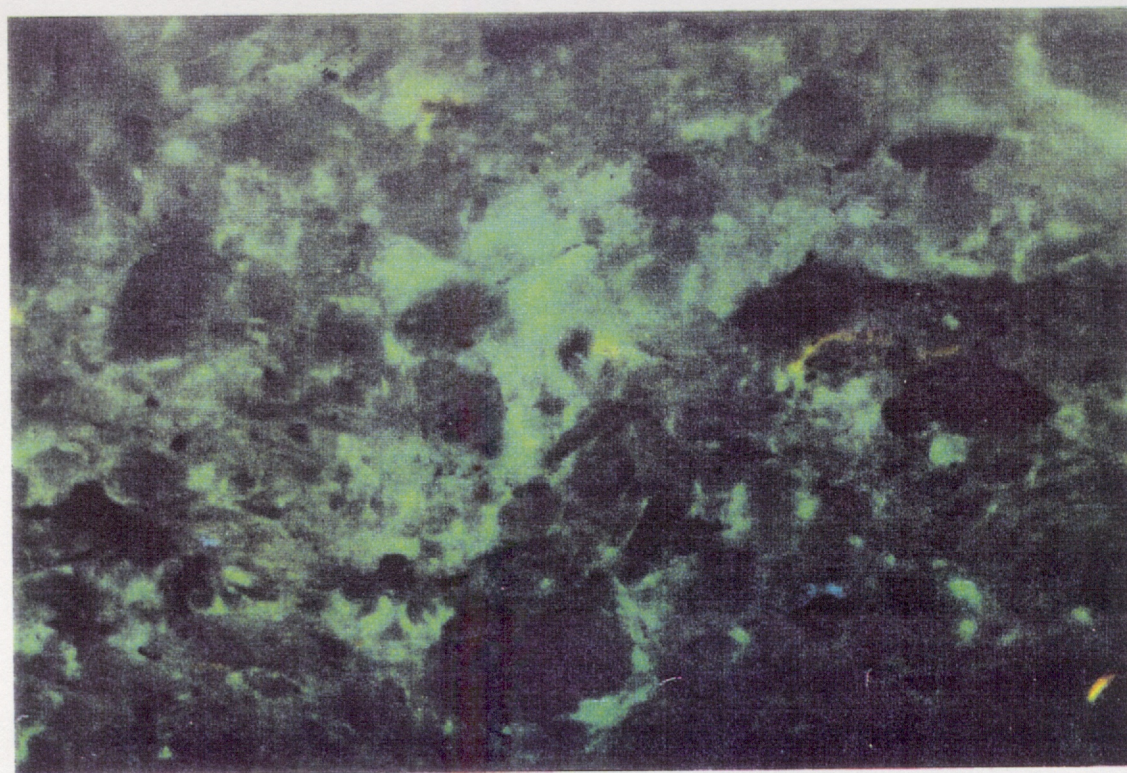


Plate 6: Same field as above Fluorescence Mode
 Oil (intense green) is dispersed throughout this siltstone.
 Variable fluorescence of the exinites (moderate orange to
 dull brown) is due to variations in the degree of oxidation.