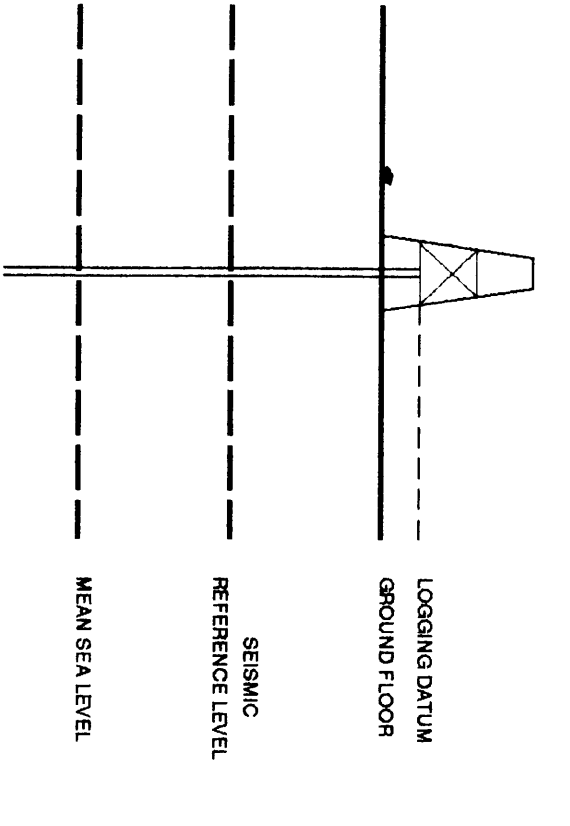


VERTICAL SEISMIC PROFILE

WELL SEISMIC SURVEY PLOT 1

Company: GFE RESOURCES LTD.
 Well: LANGLEY #1
 Field: EXPLORATION
 Country: AUSTRALIA
 Reference No: SY1561022
 Date Logged: 03-JUN-1994
 Location: 028 55 51.0897 S 142 56 10.6257 E
 Elevations: NB: 69.70 DF: 69.30 GL: 64.00
 Permanent Datum: MSL
 Field Record No: MWD/SONET/EXPLOR/ LANGLEY/ SY1/ 624
 Convention: AMBIGUOUS

Logging Datum: 69.70
 Scientific Reference Datum: 0.00
 ELEVATION ABOVE MEAN SEA LEVEL



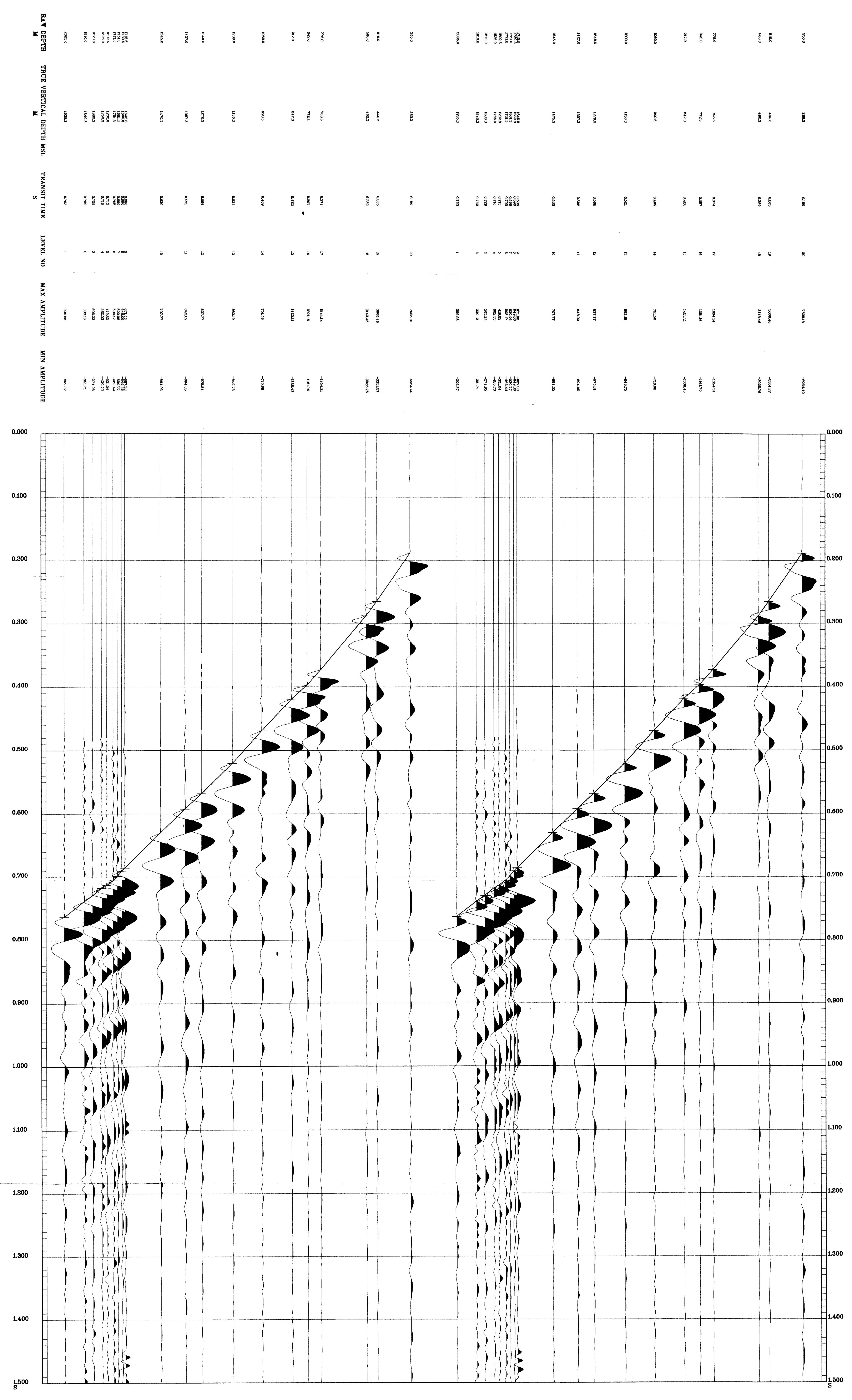
Total Number of Levels: 20
 Depth Reference: SRD

Run	Date	Tool Type	SRD		Casing Size		Tool Joint	
			Depth	SRD	Depth	SRD	Depth	SRD
1	03-06-94	DL-43	0 M	6.5 M	0 M	1500 M	2000 M	2000 M
2	03-06-94	DL-43	0 M	6.5 M	0 M	1500 M	2000 M	2000 M

All interpretations are opinions based on inferences from electrical or other measurements and we cannot, and do not guarantee the accuracy or correctness of any interpretations, and we shall not, except in the case of gross or willful negligence on our part, be liable or responsible for any loss, costs, damages or expenses incurred or sustained by anyone resulting from any interpretations made by any of our officers, agents or employees. These interpretations are also subject to Clause 4 of our General Terms and Conditions as set out in our current Price Schedule.

**** MEDIAN STACK ****
 (DOWNHOLE DATA)
 MEDIAN COHERENCY STACK OF THE DOWNHOLE COMPONENT
 PROCESSING SEQUENCE:
 MEDIAN STACK APPLIED
 BANDPASS FILTER : 5 - 90 HZ
 VERTICAL SCALE : 40 CM/SEC
 POLARITY (SEIS) : NORMAL
 TIMES REFERENCED TO FIRE PULSE

**** MEDIAN STACK ****
 (DOWNHOLE DATA)
 MEDIAN COHERENCY STACK OF THE DOWNHOLE COMPONENT
 PROCESSING SEQUENCE:
 MEDIAN STACK APPLIED
 BANDPASS FILTER : 5 - 90 HZ
 VERTICAL SCALE : 40 CM/SEC
 POLARITY (SEIS) : REVERSE
 TIMES REFERENCED TO FIRE PULSE



COMPANY GFE RESOURCES LTD.
 FIELD EXPLORATION
 WELL LANGLEY #1
 COUNTRY AUSTRALIA

