

DEPT. MNT. RES. & ENV.
PE900954

COMPANY: GFF Resources Ltd. WELL: Langley #1
 FIELD: Exploration RIG: Century #11 STATE: Victoria
 LOCATION: X-688819 E Y-45726093 442 46' 10.625"
 ELEV: 697 M ABOVE PERM. DATUM
 LOG MEASURED FROM: KIL ELEV: 697 M
 DRILLING MEASURED FROM: KIL ELEV: 697 M
 DATE: 05-06-1994
 DEPTH DRIER: 2006.0 M
 DEPTH LOGGER (SON): 2007.0 M
 BIT SIZE: 1 7/8" @ 2006.0 M
 CASING LOGGER: 3333.5 M @ 134.4 M
 CASING DRIER: 9.5/8" @ 134.4 M
 TYPE FLUID IN HOLE: KCL Polymer @ 2006.0 M
 DENS.: 9.35 LB/G @ 2006.0 M
 PH: 7.1 @ 2006.0 M
 FID. LOSS: 9.35 LB/G @ 2006.0 M
 SOURCE OF SAMPLE: LITONILURE @ 22.0 DRDC
 RMT @ MEAS. TEMP: 4.21 CHMM @ 14.0 DRDC
 RMC @ MEAS. TEMP: 3.7 CHMM @ 16.0 DRDC
 RMC @ MEAS. TEMP: 7.58 CHMM @ 16.0 DRDC
 SOURCE: RMT RMC PHRSS
 RMT @ BHT: 196 CHMM @ 73.3 DRDC
 RMC @ BHT: 196 CHMM @ 73.3 DRDC
 M. LOGGER ON BOTTOM: 0300.04.05.1994
 M. LOGGER ON BOTTOM: 0300.04.05.1994
 EQUIP. LOCATION: 73.3 DRDC
 RECORDED BY: M Walsby/B. Taylor
 WITNESSED BY: M Walsby/B. Taylor

All interpretations are opinions based on inferences from electrical or other measurements and we cannot, and do not guarantee the accuracy or correctness of any interpretations, and we shall not, except in the case of gross or willful negligence on our part, be liable or responsible for any loss, costs, damages or expenses incurred or sustained by anyone resulting from any interpretations made by any of our officers, agents or employees. These interpretations are also subject to Clause 4 of our General Terms and Conditions as set out in our current Price Schedule.

| | |
|-----------------------|----------------------|
| Run No. | 11 |
| Service Order No. | |
| Drilling Fluid Level | |
| Salinity | 17700.0 PPM |
| Rmt @ BHT | 3.0 CHMM @ 73.3 DEGC |
| Rmc @ BHT | 3.0 CHMM @ 73.3 DEGC |
| Logging Speed | 1800.0 F/HR |
| EQUIPMENT DATA | |
| Tool Number 1 | GFC-A 10'8 |
| Tool Number 2 | GFK-A 64' |
| Tool Number 3 | GFC-A 1046 |
| Tool Number 4 | CST-C 2630 |
| Tool Number 5 | CST-Z 756 |
| Tool Number 6 | |
| Tool Number 7 | |
| Tool Number 8 | |
| Tool Number 9 | |
| Tool Number 10 | |
| Tool Number 11 | |
| Tool Number 12 | |

REMARKS: Correlated to DLL-MSFL-GR-SP run #1 03-06-1994.
 Attempted 60 cores with 10 gram charges with combo bullets. 53 cores recovered. 4 bullets lost at 1890, 1882, 1876, 5, 1438. 3 bullets misfired.

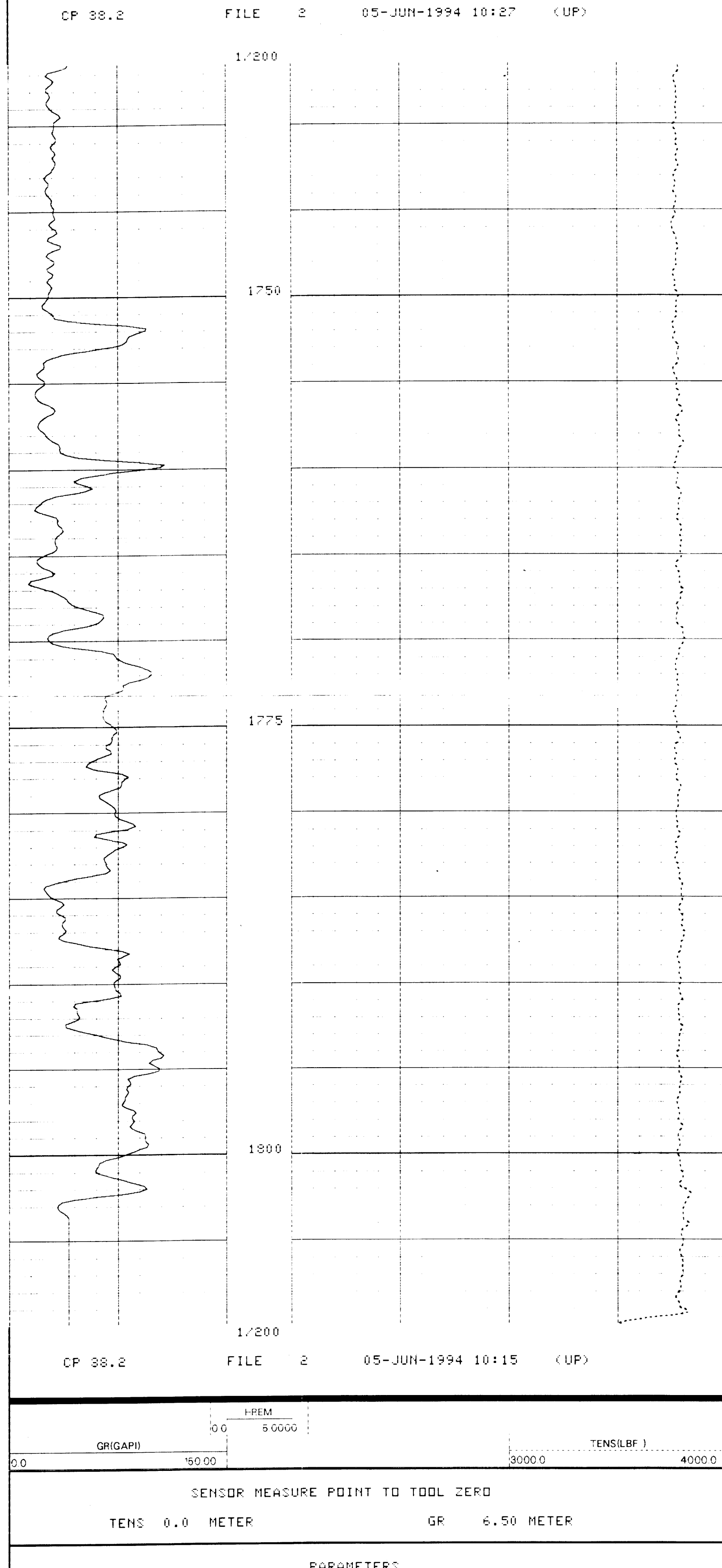
CORE SUMMARY

SHOT SUMMARY LISTING PERFORMED 05-JUN-1994 12:45

| SHOT | STATUS | DEPTH | TENSION |
|------|--------|--------|---------|
| 1 | FIRED | 1990.1 | 299.5 |
| 2 | FIRED | 1989.0 | 570.5 |
| 3 | FIRED | 1969.0 | 545.5 |
| 4 | FIRED | 1957.0 | 155.1 |
| 5 | FIRED | 1924.5 | 1284. |
| 6 | FIRED | 1884.0 | 519.5 |
| 7 | FIRED | 1882.0 | 1364. |
| 8 | FIRED | 1878.4 | 661.5 |
| 9 | FIRED | 1876.6 | 1699. |
| 10 | FIRED | 1870.0 | 134.5 |
| 11 | FIRED | 1855.5 | 108.1 |
| 12 | FIRED | 1853.1 | 759.0 |
| 13 | FIRED | 1836.5 | 919.5 |
| 14 | FIRED | 1827.0 | 859.7 |
| 15 | FIRED | 1825.5 | 836.0 |
| 16 | FIRED | 1824.0 | 1275. |
| 17 | FIRED | 1822.5 | 355.7 |
| 18 | FIRED | 1821.0 | 944.0 |
| 19 | FIRED | 1818.4 | 1110. |
| 20 | FIRED | 1814.4 | 1065. |
| 21 | FIRED | 1810.5 | 1285. |
| 22 | FIRED | 1808.0 | 1261. |
| 23 | FIRED | 1804.5 | 702.0 |
| 24 | FIRED | 1803.5 | 970.0 |
| 25 | FIRED | 1802.0 | 238.0 |
| 26 | FIRED | 1799.9 | 594.0 |
| 27 | FIRED | 1798.0 | 245.3 |
| 28 | FIRED | 1795.0 | 203.0 |
| 29 | FIRED | 1789.0 | 625.0 |
| 30 | FIRED | 1784.0 | 495.2 |
| 31 | FIRED | 1783.0 | 459.0 |
| 32 | FIRED | 1781.0 | 741.0 |
| 33 | FIRED | 1778.5 | 443.7 |
| 34 | FIRED | 1776.4 | 553.0 |
| 35 | FIRED | 1772.0 | 586.5 |
| 36 | FIRED | 1770.0 | 985.5 |
| 37 | FIRED | 1768.2 | 648.0 |
| 38 | FIRED | 1733.5 | 537.0 |
| 39 | FIRED | 1732.0 | 251.7 |
| 40 | FIRED | 1729.5 | 1006. |
| 41 | FIRED | 1728.0 | 720.5 |
| 42 | FIRED | 1718.0 | 565.0 |
| 43 | FIRED | 1712.5 | 613.5 |
| 44 | FIRED | 1701.0 | 603.5 |
| 45 | FIRED | 1692.1 | 221.7 |
| 46 | FIRED | 1676.9 | 573.0 |
| 47 | FIRED | 1634.0 | 545.0 |
| 48 | FIRED | 1579.0 | 615.0 |
| 49 | FIRED | 1541.0 | 235.7 |
| 50 | FIRED | 1522.0 | 220.2 |
| 51 | FIRED | 1518.5 | 224.2 |
| 52 | FIRED | 1516.0 | 561.0 |
| 53 | FIRED | 1438.0 | 1842. |
| 54 | FIRED | 1375.5 | 249.2 |
| 55 | FIRED | 1325.0 | 1851. |
| 56 | FIRED | 1291.0 | 738.5 |
| 57 | FIRED | 1237.0 | 251.5 |
| 58 | FIRED | 916.0 | 394.7 |
| 59 | FIRED | 895.1 | 873.5 |
| 60 | FIRED | 836.0 | 265.2 |

DEPTH UNITS : METE BIT SIZE : 8.500 IN
 RING TYPE : LAR./SMA BULLET TYPE : COMBINATION
 POWDER LOAD : 10.00 G POWDER TYPE : WEST
 CP 38.2 FILE 3 05-JUN-1994 12:44 (UP)

BEFORE SURVEY CORRELATION

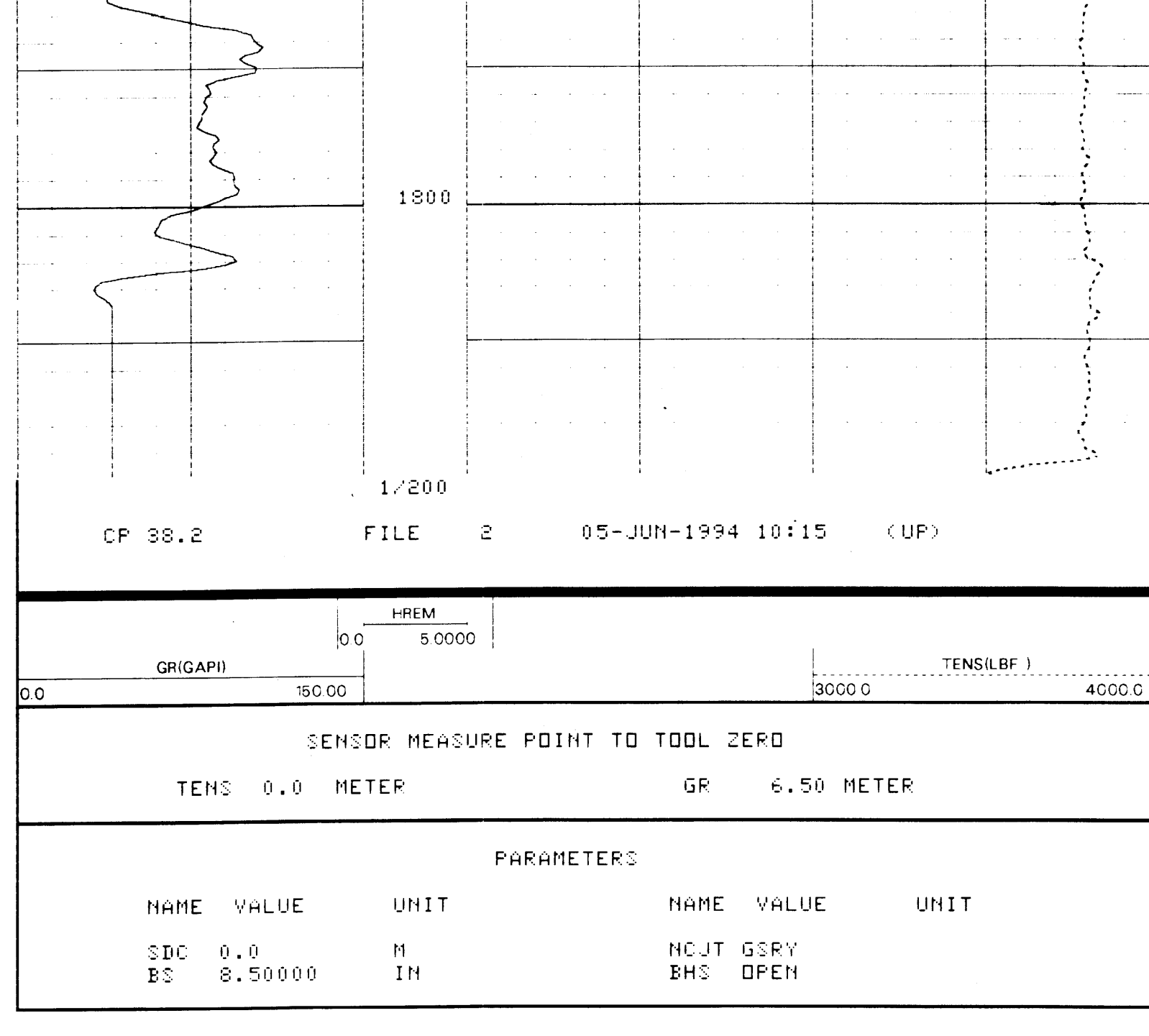
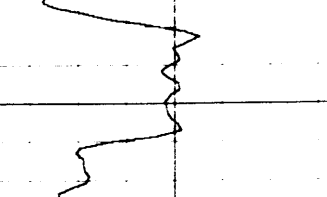


SENSOR MEASURE POINT TO TOOL ZERO
 TENS 0.0 METER GR 6.50 METER

| NAME | VALUE | UNIT | NAME | VALUE | UNIT |
|------|---------|------|------|-------|------|
| SDC | 0.0 | M | NCJT | GSRV | |
| BS | 8.50000 | IN | BHS | OPEN | |

COMPANY: GFF Resources Ltd. SCHL. FR: 1990.0 M
 WELL: Langley #1 SCHL. TD: 2007.0 M
 FIELD: Exploration DLRL. TD: 2006.0 M
 RIG: Century #11 STATE: Victoria Elev: KB 69.7 M
 DF 69.3 M
 GL 64.0 M

LANGLEY #1 SIDEWALL CORES RUN #1



SENSOR MEASURE POINT TO TOOL ZERO
 TENS 0.0 METER GR 6.50 METER

| NAME | VALUE | UNIT | NAME | VALUE | UNIT |
|------|---------|------|------|-------|------|
| SDC | 0.0 | M | NCJT | GSRV | |
| BS | 8.50000 | IN | BHS | OPEN | |

COMPANY: GFF Resources Ltd. SCHL. FR: 1990.0 M
 WELL: Langley #1 SCHL. TD: 2007.0 M
 FIELD: Exploration DLRL. TD: 2006.0 M
 RIG: Century #11 STATE: Victoria Elev: KB 69.7 M
 DF 69.3 M
 GL 64.0 M

LANGLEY #1 SIDEWALL CORES RUN #1

