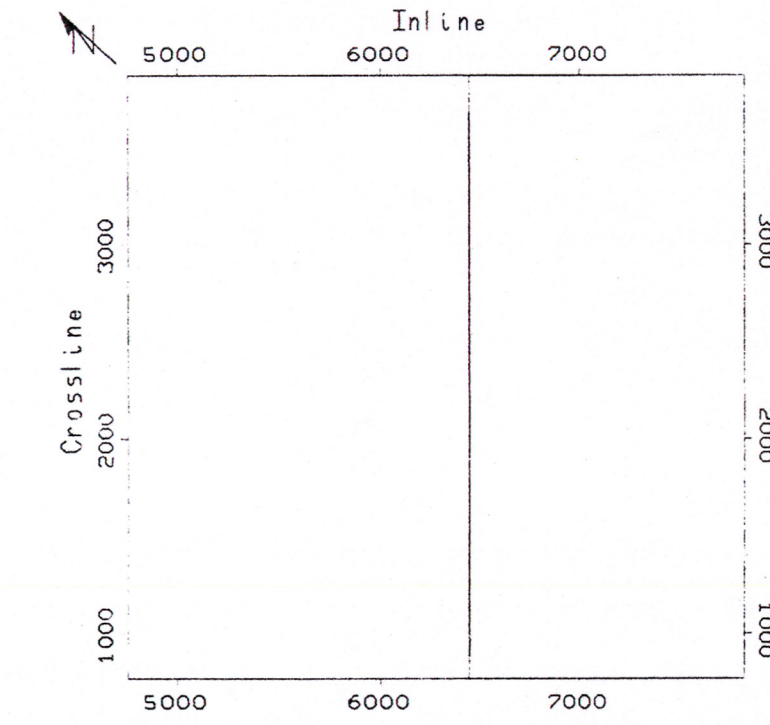


# Western Underground Gas

INLINE 6440  
CROSSLINE: 885 - 3685

Iona-3  
N 46.00 E

MIGRATED STACK  
(AMPLITUDE)



Horizontal Scale: 1 : 5000  
Vertical Scale: 25.00 cm/sec  
Sample Rate: 2.0 msec  
Line Spacing: 10.0 meters  
Trace Spacing: 10.0 meters  
Trace Bias: 0  
Trace Type: 4ggg Trace Variable Area  
Trace Decimation: 1

Interpreted by: SHENG M. YU  
WESTERN UNDERGROUND GAS STORAGE PTY LTD  
AIS-3D

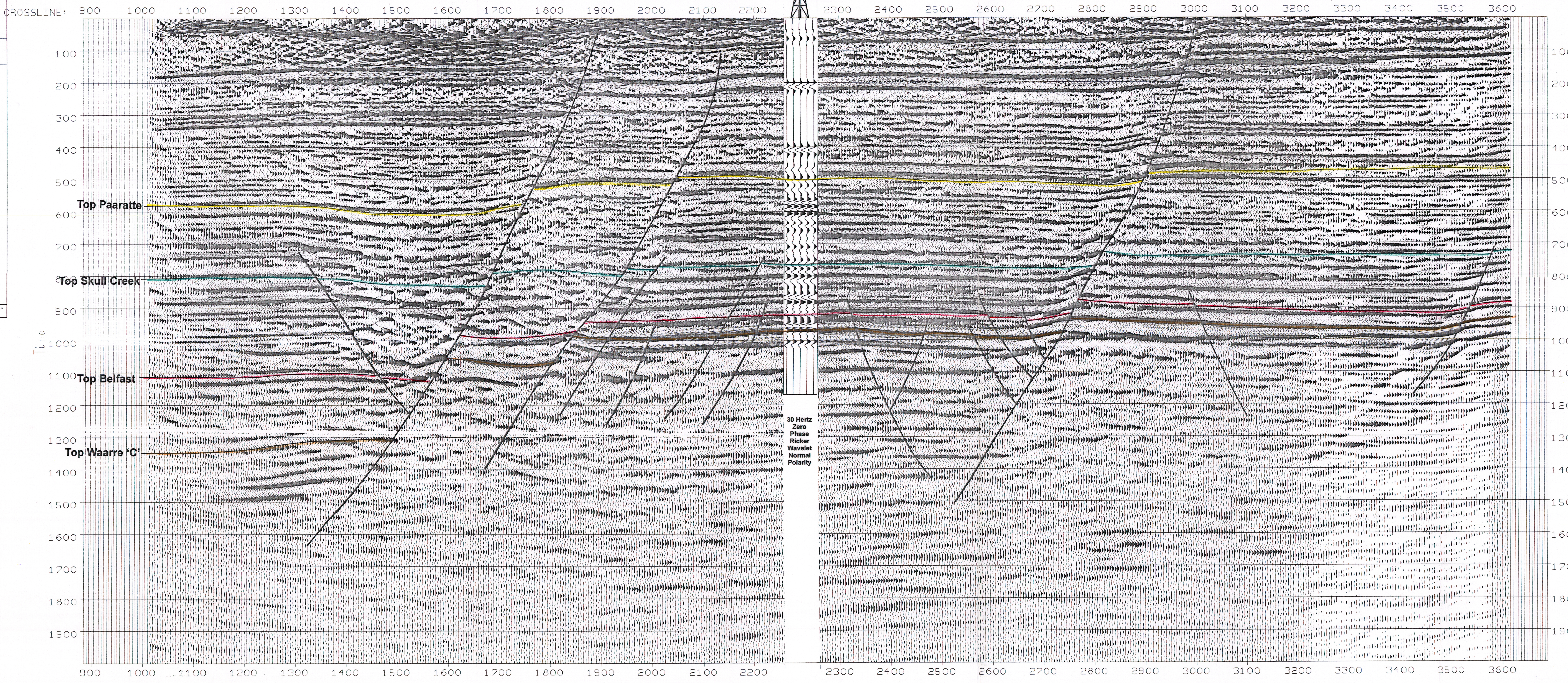
Enclosure 11  
Synthetic seismogram seismic tie  
through Iona-3

**WESTERN UNDERGROUND  
GAS STORAGE PTY LTD**

**SYNTHETIC SEISMOGRAM  
SEISMIC TIE THROUGH  
IONA-3**

**ENCLOSURE**

|                             |                         |
|-----------------------------|-------------------------|
| Date: October 1999          | Revised:                |
| Interpreted by: Sheng M. Yu | Datum:                  |
| Drafted by: D. Russo        | Accompanying Iona-3 WCR |



30 Hertz  
Zero  
Phase  
Ricker  
Wavelet  
Normal  
Polarity