



STATE	Victoria	WELL	Iona #2	FIELD	Iona	STATE	Victoria	RIG	Century Rig-11
COMPANY	GFE Resources Ltd.	LOCATION	Iona #3-01	API SERIAL NO.	VP 2482	LOCATION	Iona #3-01	AS-GR	DLL-MSFL-GR
LOG MEASURED FROM	KB	ELEV.	134.3 M	PERMANENT DATUM	MSL	AS-GR	143 02'01.585" E	LK-CNL-GR	WSTI(Checkshot)
DRILLING MEASURED FROM	KB	ELEV.	0.0 M	LOG MEASURED FROM	KB	RFT-GR		RFT-GR	Elev.: KB.134.3 M
DATE	25-FEB-94	DRILLING MEASURED FROM	KB	DATE	25-FEB-94	CST-GR		CST-GR	GL.130.0 M
RUN NO.	One	DEPTH DRILLER	1650.0 M	DEPTH LOGGER (SEEN.)	1650.0 M				
DEPTH DRILLER	1650.0 M	BURN LOG INTERVAL	1699.0 M	TOP LOG INTERVAL	1034.5 M				
CASTING-DRILLER	9 5/8" @ 637.0 M								
CASTING-LOGGER	636.0 M								
BIT SIZE	12 1/4" @ 640.0 M								
TYPE FLUID IN HOLE	3% KCl/Gel/Polymer								
DENS.	9.30 LB/G								
PH	8.7								
SOURCE OF SAMPLE	FLOWLINE								
Rm Q Meas. Temp.	308 OHMM @ 210 DEGC								
Rmf Q Meas. Temp.	266 OHMM @ 23.0 DEGC								
Rmc Q Meas. Temp.	428 OHMM @ 21.0 DEGC								
SOURCE: Rmf Rms	Press								
Rm Q BHT	-000 OHMM @								
Circulation Ended	06:30 26/Feb								
Logger on Bottom	03:50 27/Feb								
Max. Res. Temp.	8386								
Equip. Location	CEA								
Recorded By	Alan Richmond/Mike Wilson								
Witnessed By	Vai Akbari								

The well name, location and borehole reference data were furnished by the customer.

All interpretations are opinions based on inferences from electrical or other measurements and we cannot, and do not guarantee the accuracy or correctness of any interpretations, and we shall not, except in the case of gross or willful negligence on our part, be liable or responsible for any loss, costs, damages or expenses incurred or sustained by anyone resulting from any interpretations made by any of our officers, agents or employees. These interpretations are also subject to Clause 4 of our General Terms and Conditions as set out in our current Price Schedule.

Run No.	One
Service Order No.	
Drilling Fluid Level	
Salinity	
Rmf @ BHT	-000 OHMM @
Rmc @ BHT	-001 OHMM @
Logging Speed	1800.0 F/HR
EQUIPMENT DATA	
Tool Number 1	GFH-A 317
Tool Number 2	CST-C
Tool Number 3	SHM-AA 764
Tool Number 4	
Tool Number 5	
Tool Number 6	
Tool Number 7	
Tool Number 8	
Tool Number 9	
Tool Number 10	
Tool Number 11	
Tool Number 12	

REMARKS:
Log correlated to DLL-MSFL-GR, Run #1. (25-Feb-94)
29 cores recovered from 30 shots.
All bullets were recovered.

SHOT SUMMARY

SHOT SUMMARY LISTING PERFORMED 27-FEB-1994 03:33

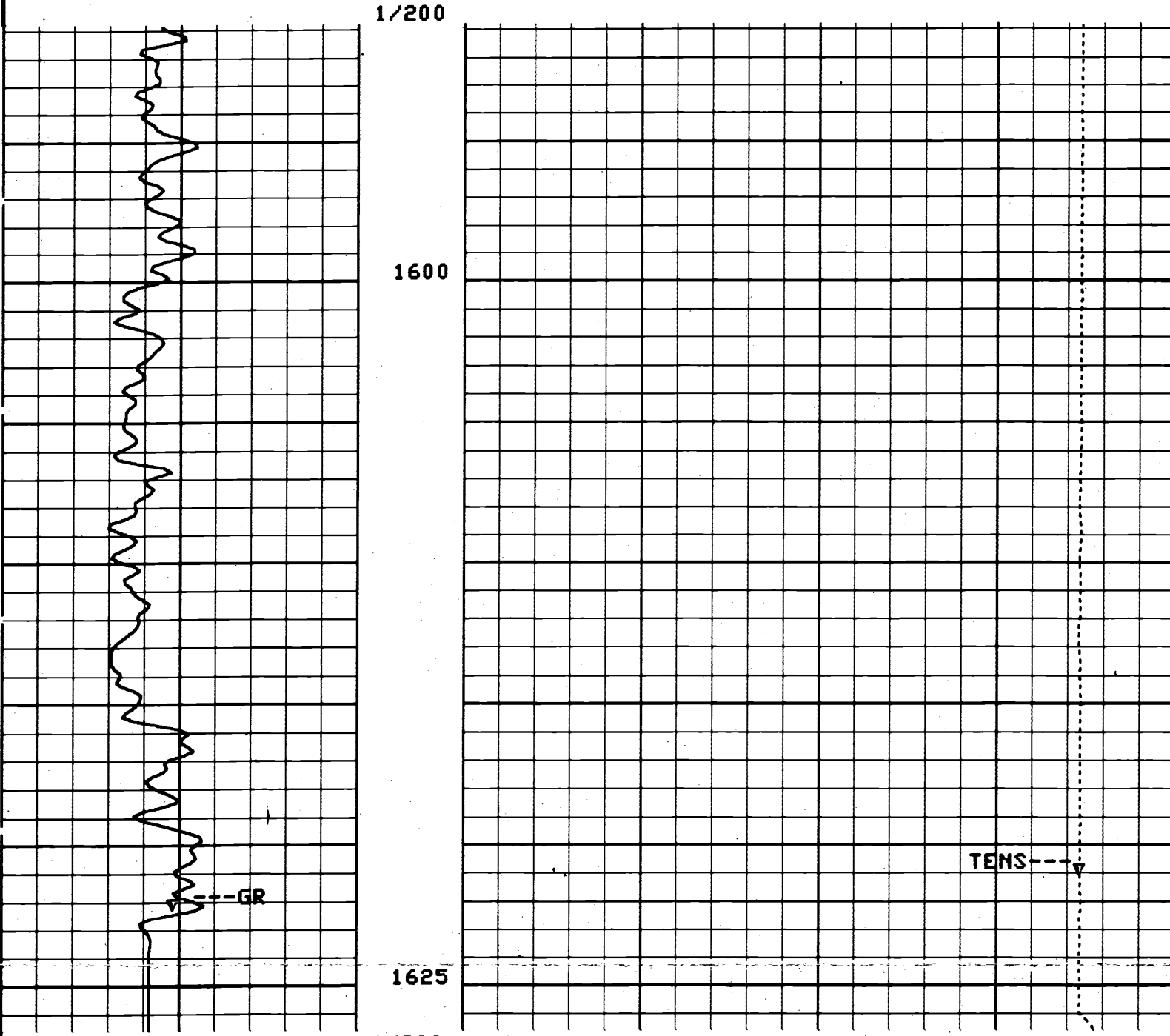
SHOT	STATUS	DEPTH	TENSION
1	FIRED	1599.0	214.1
2	FIRED	1590.0	81.31
3	FIRED	1550.5	895.0
4	EMPTY	1537.0	380.5
5	FIRED	1516.5	1446.
6	FIRED	1469.0	1189.
7	FIRED	1457.5	659.0
8	FIRED	1437.4	1480.
9	FIRED	1426.0	879.5
10	FIRED	1418.0	950.5
11	FIRED	1412.1	1035.
12	FIRED	1408.5	1253.
13	FIRED	1402.0	107.1
14	FIRED	1392.0	1033.
15	FIRED	1386.0	1211.
16	FIRED	1381.0	601.0
17	FIRED	1374.0	249.8
18	FIRED	1371.0	64.75
19	FIRED	1362.0	1120.
20	FIRED	1357.9	872.0
21	FIRED	1353.0	367.7
22	FIRED	1314.9	185.2
23	FIRED	1303.5	220.3
24	FIRED	1290.0	1100.
25	FIRED	1281.0	991.0
26	FIRED	1259.9	1090.
27	FIRED	1161.0	591.5
28	FIRED	1129.1	753.0
29	FIRED	1090.5	666.0
30	FIRED	1034.5	1173.

DEPTH UNITS : METE BIT SIZE : 8.500 IN
RING TYPE : SMALL BULLET TYPE :
POWDER LOAD : 10.00 G POWDER TYPE :

GR Correlation

GR(GAPI)	80.000	TENS(LBF)	10000.	0.0
----------	--------	-----------	--------	-----

CP 38.2 FILE 1 27-FEB-1994 03:42 (UP)



CP 38.2 FILE 1 27-FEB-1994 03:37 (UP)

GR(GAPI)	80.000	TENS(LBF)	10000.	0.0
----------	--------	-----------	--------	-----

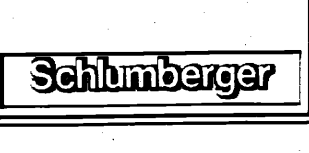
SENSOR MEASURE POINT TO TOOL ZERO

TENS 0.0 METER GR 3.02 METER

PARAMETERS

NAME	VALUE	UNIT	NAME	VALUE	UNIT
SDC	0.0	F	NCJT	GSRY	
BS	8.50000	IN	BHS	OPEN	

COMPANY	GFE Resources Ltd.	SCHL. FR	1599.0 M
WELL	Iona #2	SCHL. TD	1650.0 M
FIELD	Iona	DRLR. TD	1660.0 M
STATE	Victoria	Elev. KB	134.3 M
RIG	Century Rig-11	DF	134.0 M
		GL	130.0 M



Iona #2
Stidewall Cores
Run #1