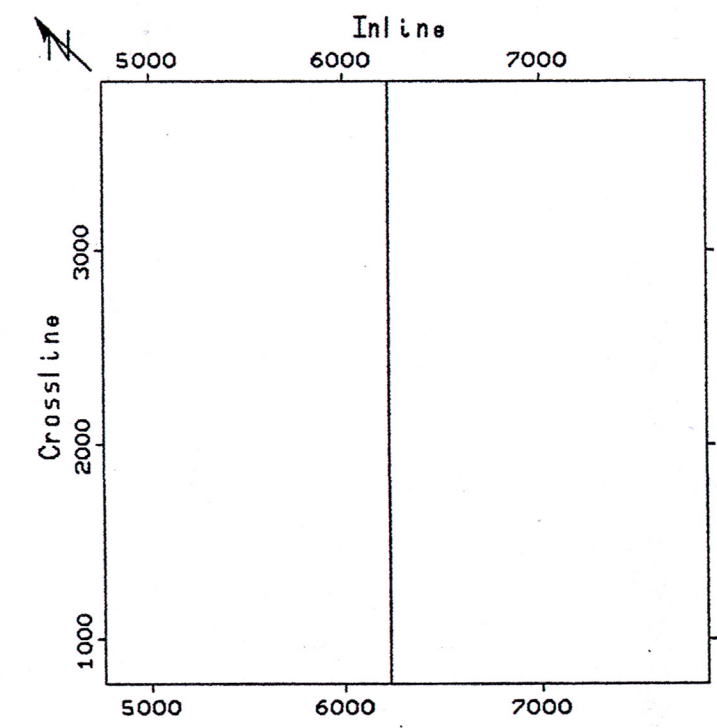


# Western Underground Gas

INLINE 6230  
CROSSLINE: 980 - 3640

Iona-Obs-2  
N 46.00 E

MIGRATED STACK  
(AMPLITUDE)



Horizontal Scale: 1 : 5000  
Vertical Scale: 25.00 cm/sec  
Sample Rate: 2.0 msec  
Line Spacing: 10.0 meters  
Trace Spacing: 10.0 meters  
Trace Gain: 07  
Trace Type: 4-gge Trace Variable Area  
Trace Declination: 1

Interpreted by: 9600 K.Y. 13-SEP-1999  
Western Underground Gas  
AIS-3D

Enclosure 11  
Synthetic seismogram seismic tie  
through Iona Obs-2

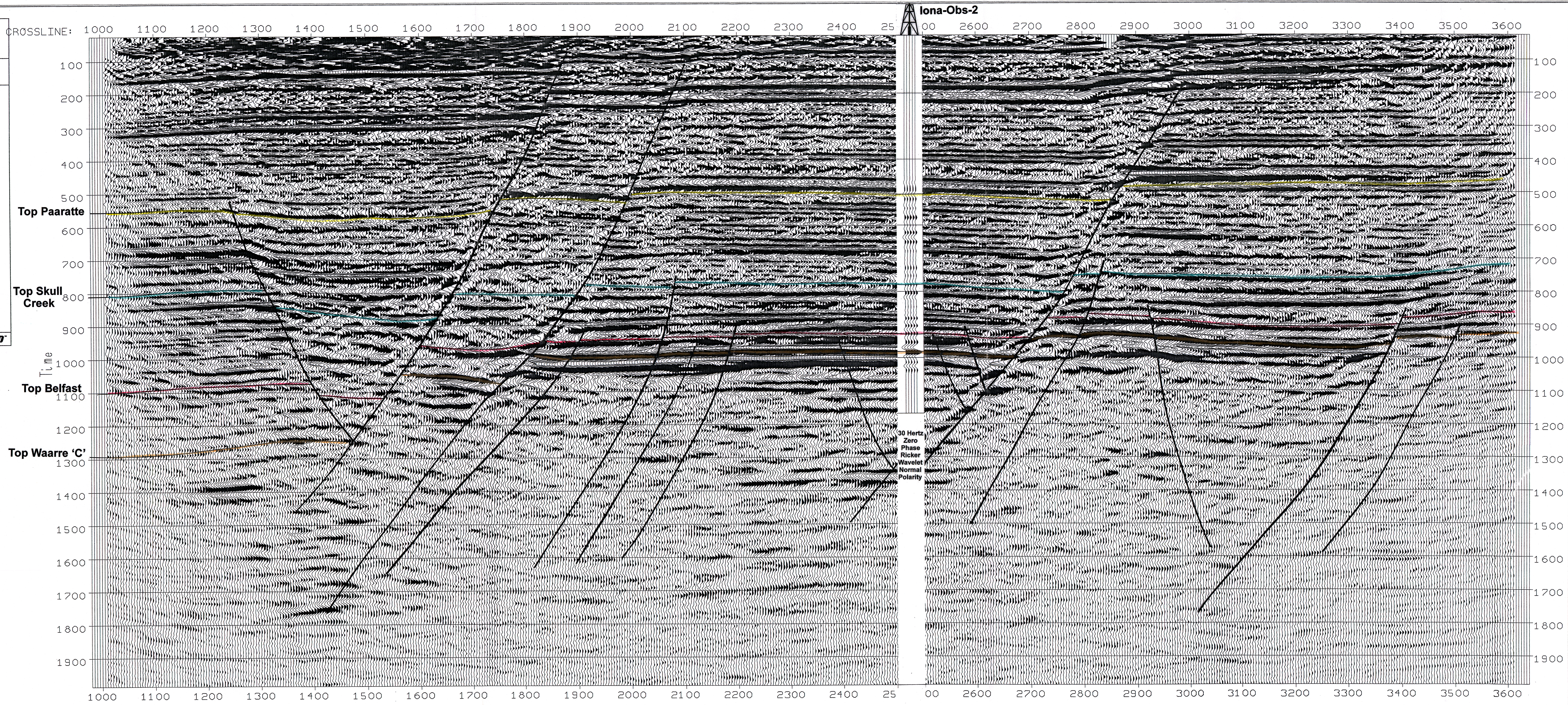


WESTERN UNDERGROUND  
GAS STORAGE PTY LTD

## SYNTHETIC SEISMOGRAM SEISMIC TIE THROUGH IONA-OBS-2

ENCLOSURE

Date: September 1999	Revised:
Interpreted by: Sheng M. Yu	Datum:
Drafted by: D. Russo	Accompanying Iona-Obs-2 WCR



30 Hertz  
Zero  
Phase  
Ricker  
Wavelet  
Normal  
Polarity