

COMPENSATED SONIC GAMMA RAY
CALIPER
1:500



PERMANENT DATA LOG MEASURED FROM K. B. 117.3 M ABOVE PERMANENT DATUM DATE 26-OCT-90	LOCATION PEP 100 WELL INGLEBY #1 FIELD WILDCAT PROVINCE/COUNTY VICTORIA COUNTRY/STATE AUSTRALIA	COMPANY GAS AND FUEL EXPLORATION N.L.	PERMIT NUMBER PEP 100	ELEVATIONS MSL DF 117.0 M CH 114.0 M
DEPTH-DRILLER 351.2 M LAST READING 326.0 M CASING-DRILLER 64.4 M BIT SIZE 6.5 INS EQUIPMENT LSU	LOCATION PEP 100 WELL INGLEBY #1 FIELD WILDCAT PROVINCE/COUNTY VICTORIA COUNTRY/STATE AUSTRALIA	COMPANY GAS AND FUEL EXPLORATION N.L.	PERMIT NUMBER PEP 100	ELEVATIONS MSL DF 117.0 M CH 114.0 M

RUN NUMBER	BOREHOLE RECORD	TO	SIZE	VEICHT	CASING RECORD
ONE	BIT FROM 0.5 INS CSC. SHOE	10 T.D.	9 5/8 INS	47 LB/FT	FROM SURFACE TO CSC. SHOUL.

REMARKS
COMPENSATED SONIC GAMMA RAY CALIPER 1:500
WELL CIRCULATED FOR 1 HR. CIRCULATION STOPPED AT 22:00 HRS.
LATITUDE 38 18' 53.6" S. LONG 143 47' 44.8" E.
MEASURING WHEEL CALIBRATION 1.01935

SYSTEM CONFIGURATION DATES: LOGGED 06.FEB.90 PROCESSED PLOTTED 06.FEB.90

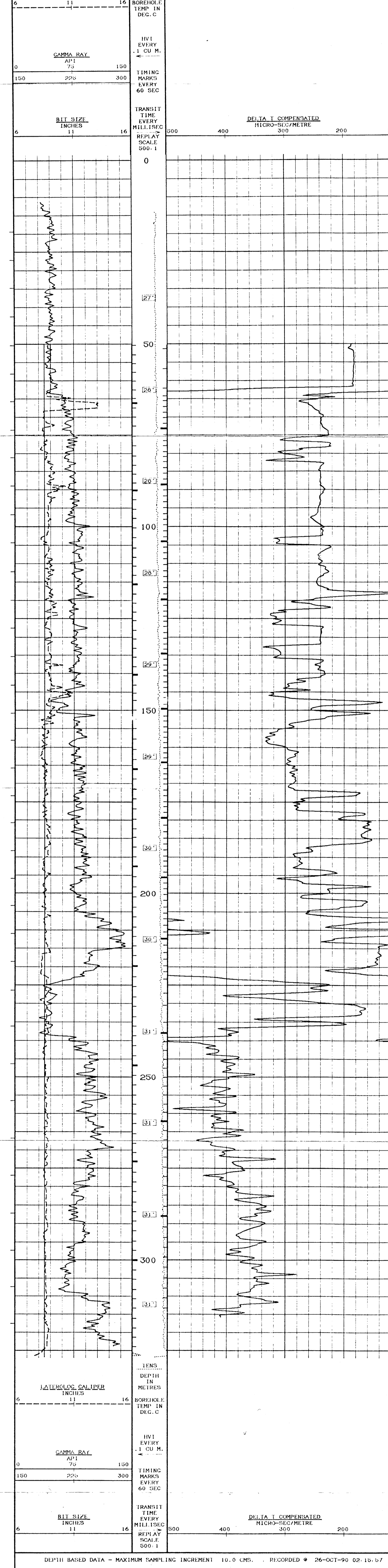
ALL INTERPRETATIONS ARE OPINIONS BASED ON INFERENCE FROM ELECTRICAL OR OTHER MEASUREMENTS AND WE CANNOT AND DO NOT GUARANTEE THE ACCURACY OR CORRECTNESS OF ANY INTERPRETATIONS. AND WE SHALL NOT BE LIABLE OR RESPONSIBLE FOR ANY LOSS OR DAMAGE INCURRED BY ANYONE RESULTING FROM ANY INTERPRETATION MADE BY ANY OF OUR OFFICERS, AGENTS OR EMPLOYEES. THESE INTERPRETATIONS ARE ALSO SUBJECT TO OUR GENERAL TERMS AND CONDITIONS AS SET OUT IN OUR CURRENT PRICE SCHEDULE.

AFTER SURVEY CALIBRATION

MICRO-LATEROLOG CHECK	BEFORE SURVEY CHECK 25-OCT-90 10.11 AFTER SURVEY CHECK 26-OCT-90 03.09
DUAL LATEROLOG CHECK	BEFORE SURVEY CHECK 25-OCT-90 10.10 AFTER SURVEY CHECK 26-OCT-90 03.08
CAMMA CALIBRATION	FIELD CALIBRATED ON 26-OCT-90 10.16
LATEROLOG CALIPER CHECK	FIELD CALIBRATED ON 25-OCT-90 10.19

MAIN LOG

DEPTH BASED DATA - MAXIMUM SAMPLING INCREMENT 10.0 CMS. RECORDED @ 26-OCT-90 02:15:57
PLOTTED ON 26-OCT-90. FILE # 3. ID. MAIN LOG TAPE ID. GAS & FUEL SGL DATA



DEPTH BASED DATA - MAXIMUM SAMPLING INCREMENT 10.0 CMS. RECORDED @ 26-OCT-90 02:15:57
PLOTTED ON 26-OCT-90. FILE # 3. ID. MAIN LOG TAPE ID. GAS & FUEL SGL DATA

MAIN LOG

BEFORE SURVEY CALIBRATION

SONDE SERIAL NUMBERS			
DFE	DLP 005	DLE	005
BCA			
NCS			
BCA LOGGING CONSTANTS			
MATRIX INTERVAL TRANSIT TIME	150.0	MICRO-SEC/METRE	64
FLUID INTERVAL TRANSIT TIME	100.0	MICRO-SEC/FT	0.0
DISCRIMINATOR LEVEL 1	0.0		
DISCRIMINATOR LEVEL 2	1.00		
SONIC TRANSMITTER	1.00		
SONIC SONDE TYPE	STANDARD		
DFE LOGGING CONSTANTS			
BIT	0.0000	IN.	
SONDE CONFIGURATION	LATEROLOG & MICROLOG (MMRL, MINV & MLL)		
SONDE TYPE	PRODUCTION		
ROTARY CABLE HEAD TO SP IN MM	5100.0000		
VOLTAGE REFERENCE	ARMOUR		
DATA DRIVE	ON		
INTERFERENCE REJECTION	60	Hz	
SUI. K FACTOR	0.0000	IN.	
DLI. K FACTOR	1.4300		
MHI. K FACTOR	0.0200		
GLI. K FACTOR	0.0200		
MNI. K FACTOR	0.3300		
MLI. K FACTOR	0.0200		
MICRO-LATEROLOG CALIBRATION			
BASE CALIBRATION	MEASURED	CALIBRATED(OHMM)	FIELD CALIBRATED ON 25-OCT-90 10.11
REF.1	60.0	0.0	
REF.2	9568.7	230.0	
INTERNAL CALIBRATOR AT BASE (OHMM)			
INTERNAL FIELD CHECK (OHMM)	12.0		
DUAL LATEROLOG CALIBRATION			
BASE CALIBRATION	SHALLOW (OHMM)	DEEP (OHMM)	CRONINGEN (OHMM)
REF.1	0.0	0.0	0.0
REF.2	1006.3	1430.0	990.4
INTERNAL CALIBRATOR AT BASE (OHMM)			
INTERNAL FIELD CHECK (OHMM)	113.6	65.4	60.4
INTERNAL FIELD CHECK (SHALLOW OHMM)	113.6	65.4	60.4
SP CALIBRATION			
BASE CALIBRATION	MEASURED	CALIBRATED (MV)	FIELD CALIBRATED ON 16-OCT-90
REF.1	105.0	01.0	
REF.2	-104.3	-101.0	
CAMMA CALIBRATION			
BACKGROUND	MEASURED	CALIBRATED (API)	FIELD CALIBRATED ON 26-OCT-90 10.16
CALIBRATOR (GROSS)	945	060	
CALIBRATOR (NET)	078	024	
LATEROLOG CALIPER CALIBRATION			
BASE CALIBRATION	MEASURED (IN.)	CALIBRATED (IN.)	FIELD CALIBRATED ON 25-OCT-90 10.19
REF.1	85126	104200	306646
REF.2	8101	11.02	16.01
FIELD CALIBRATION			
MEASURED (IN.)	11.92	CALIBRATED (IN.)	11.82

COMPANY GAS AND FUEL EXPLORATION N.L.
WELL INGLEBY #1
FIELD WILDCAT
PROVINCE/COUNTY VICTORIA
COUNTRY/STATE AUSTRALIA