



DENSITY NEUTRON GAMMA RAY
CALIPER
1:500

| | |
|------------------------|---|
| LOCATION | PEP 100 PRVING/CO. VICTORIA FIELD WILDCAT |
| COMPANY | CAS AND FUEL EXPLORATION N.L. |
| WELL | INGLEBY #1 |
| FIELD | WILDCAT |
| COUNTRY/STATE | VICTORIA AUSTRALIA |
| PIRMIT NUMBER | PEP 100 |
| DATE | 26-OCT-90 |
| PERMANENT DATUM | M.S.L. ELEVATION 0 M |
| LOC MEASURED FROM | K.B. 117.3 M ABOVE PERMANENT DATUM |
| DRILLING MEASURED FROM | K.B. |
| RUN NUMBER | ONE |
| DEPTH-DRILLER | 331.2 M |
| DEPTH-LOGGERS | 326.5 M |
| DEPTH-LOG | 326.5 M |
| LAST READING | 63.0 M |
| CASING-DRILLER | 64.4 M |
| CASING-LOGGERS | 63.5 M |
| BIT SIZE | 6.5 INH |
| BOREHOLE TYPE | KCL/GCL |
| DEPTH-LOGGERS | 0, 4, 37.5 |
| SAMPLE SOURCE | ELI OILLINE |
| REF. & MEAS. TEMP. | .29 @ 20.3C |
| REF. & MEAS. TEMP. | .28 @ 19.7C |
| REF. & MEAS. TEMP. | .43 @ 21.0C |
| SOURCE, INSTR./MTC | PRESS. J. PERISS |
| REF. & BIT SIZE | 2.53 INH |
| REF. & BIT SIZE | 31 INH |
| MAX. REC. TEMP. | 9 |
| EQUIPMENT/MAKE | V1020, BRIS. |
| RECORDED BY | R. TENCH. |
| INTERPRETED BY | A. JANSSEN |
| ON BOTTOM | 06 15 HRS |

| BOREHOLE RECORD | | | | CASING RECORD | | | |
|-----------------|---------|-----------|-------|---------------|---------|-----------|--|
| RUN NUMBER | FROM | TO | SIZE | VEICHT | FROM | TO | |
| ONE | 0.6 INS | CSC. SHOE | T.D. | 9 5/8 INS | SURFACE | CSC. SHOE | |
| EQUIPMENT | | RUN 1 | RUN 2 | RUN 3 | RUN 4 | | |
| LSU | | 062 | | | | | |

REMARKS

DENSITY NEUTRON GAMMA RAY CALIPER 1:500
WELL CIRCULATED FOR 1 HR. CIRCULATION STOPPED AT 22:00 HRS.
LATITUDE 36 10'53.6" S. LONG 143 47'44.0" E.
MEASURING WHEEL CALIBRATION 1.01935

SYSTEM CONFIGURATION DATES: LOGGED 06.FEB.90 PROCESSED PLOTTED 06.FEB.90

ALL INTERPRETATIONS ARE OPINIONS BASED ON INFERENCES FROM ELECTRICAL OR OTHER MEASUREMENTS AND WE CANNOT AND DO NOT GUARANTEE THE ACCURACY OR CORRECTNESS OF ANY INTERPRETATIONS. AND WE SHALL NOT BE LIABLE OR RESPONSIBLE FOR ANY COSTS, DAMAGES OR EXPENSES INCURRED OR SUSTAINED BY ANYONE RESULTING FROM ANY INTERPRETATION MADE BY ANY OF OUR OFFICERS, AGENTS OR EMPLOYEES. THESE INTERPRETATIONS ARE ALSO SUBJECT TO OUR GENERAL TERMS AND CONDITIONS AS SET OUT IN OUR CURRENT PRICE SCHEDULE.

AFTER SURVEY CALIBRATION

| | |
|---------------|-------------------------------------|
| NEUTRON CHECK | BEFORE SURVEY CHECK 25-OCT-90 09:30 |
| NEAR(CPS) | AFTER SURVEY CHECK 26-OCT-90 07:30 |
| BEFORE 209 | AFTER 722 |
| RATIO | AFTER 0.293 |
| BEFORE 0.290 | AFTER 0.293 |

| | |
|----------------|-------------------------------------|
| DENSITY CHECK | BEFORE SURVEY CHECK 25-OCT-90 09:33 |
| NEAR(CPS) | AFTER SURVEY CHECK 26-OCT-90 07:33 |
| BEFORE 13174.4 | AFTER 1760.5 |
| BEFORE 13181.0 | AFTER 1767.0 |

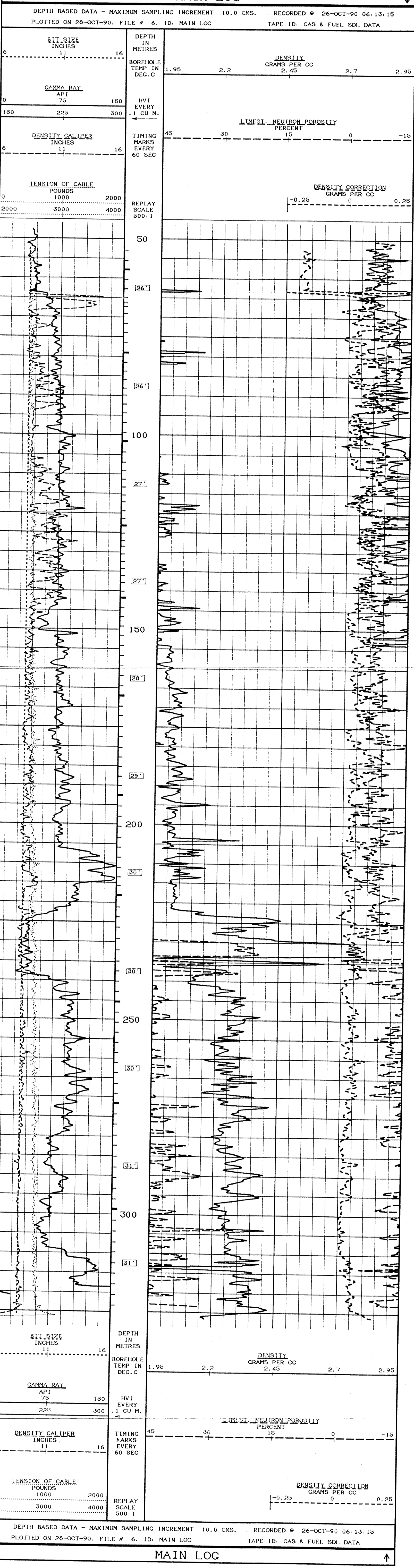
Y CALIPER CHECK

| | | |
|--------|--------------|-------------|
| REF. 1 | BEFORE (IN.) | AFTER (IN.) |
| REF. 2 | | |

DENSITY CALIPER CHECK

| | | |
|--------|--------------|-------------|
| REF. 1 | BEFORE (IN.) | AFTER (IN.) |
| REF. 2 | | |

FIELD CALIBRATED ON 26-OCT-90 09:50



BEFORE SURVEY CALIBRATION

SONDE SERIAL NUMBERS

NCS: CNS 062, CDS 062

NCS LOGGING CONSTANTS

| | | |
|---------------------|------|---------|
| MUDG | 1.10 | G/CC |
| MCD | 1.10 | G/CC |
| FTD | 1.25 | G/CC |
| MEUR (GOING UPHOLE) | 1.90 | G/CC |
| MDEP | 2.71 | MEETRES |
| WT | | INCHES |
| BT | 0.50 | INCHES |
| HVA | | G/CC |
| DHCT | | G/CC |
| CHCT | | G/CC |

NEUTRON CALIBRATION

| | | | | | | | | | | | |
|--------------------------|----------|-----------|----------|----------|-------|-------|------------------------------------|--------------------------------|----------|-------|-------|
| BASE CALIBRATION | MEASURED | NEAR 4192 | MEASURED | FAR 1794 | RATIO | 2.336 | BASE CALIBRATED ON 26-SEP-90 16:03 | FIELD CHECK ON 26-OCT-90 09:50 | | | |
| FIELD CALIBRATOR AT BASE | | | | | | | CALIBRATED(CPS) | NEAR 4090 | FAR 1000 | RATIO | 4.050 |
| FIELD CHECK | | | | | | | CALIBRATED(CPS) | 222 | 0.294 | | |
| | | | | | | | CALIBRATED(CPS) | 209 | 0.290 | | |

DENSITY CALIBRATION

| | | | | | | | | | | | |
|--------------------------|----------|----------------|----------|------------|-------|-------|------------------------------------|--------------------------------|------------|-------|-------|
| BASE CALIBRATION | MEASURED | REF. 1 4463.4 | MEASURED | FAR 2856.6 | RATIO | 15.62 | BASE CALIBRATED ON 26-SEP-90 12:03 | FIELD CHECK ON 26-OCT-90 09:43 | | | |
| FIELD CALIBRATOR AT BASE | | REF. 2 77479.0 | | 22025.9 | | | CALIBRATED(CPS) | NEAR 13301.0 | FAR 1767.0 | RATIO | 7.520 |
| FIELD CHECK | | | | | | | CALIBRATED(CPS) | 13209.4 | 1764.0 | | |
| | | | | | | | CALIBRATED(CPS) | 13174.4 | 1760.5 | | |

GAMMA CALIBRATION

| | | | | |
|--------------------|----------|----|------------------|----|
| BACKGROUND | MEASURED | 99 | CALIBRATED (API) | 91 |
| CALIBRATOR (GROSS) | 1145 | | 920 | |
| CALIBRATOR (NET) | 1046 | | 749 | |

FIELD CALIBRATED ON 25-OCT-90 09:47

Y CALIPER CALIBRATION

| | | | | | |
|-----------------------|----------------|-------|-------|-------|-------------------------------------|
| BASE CALIBRATION | MEASURED | 557.3 | 4657 | 29.41 | BASE CALIBRATED ON 26-SEP-90 09:50 |
| CALIBRATOR SIZE (IN.) | 5.99 | 8.01 | 11.62 | 13.09 | FIELD CALIBRATED ON 26-OCT-90 09:50 |
| FIELD CALIBRATION | MEASURED (IN.) | 0.07 | 11.62 | 15.61 | |
| | | 11.93 | 0.01 | | |

COMPANY GAS AND FUEL EXPLORATION N.L.
WELL INGLEBY #1
FIELD WILDCAT
PROVINCE/COUNTY VICTORIA
COUNTRY/STATE AUSTRALIA