

K.B. = 244.5' MSL.

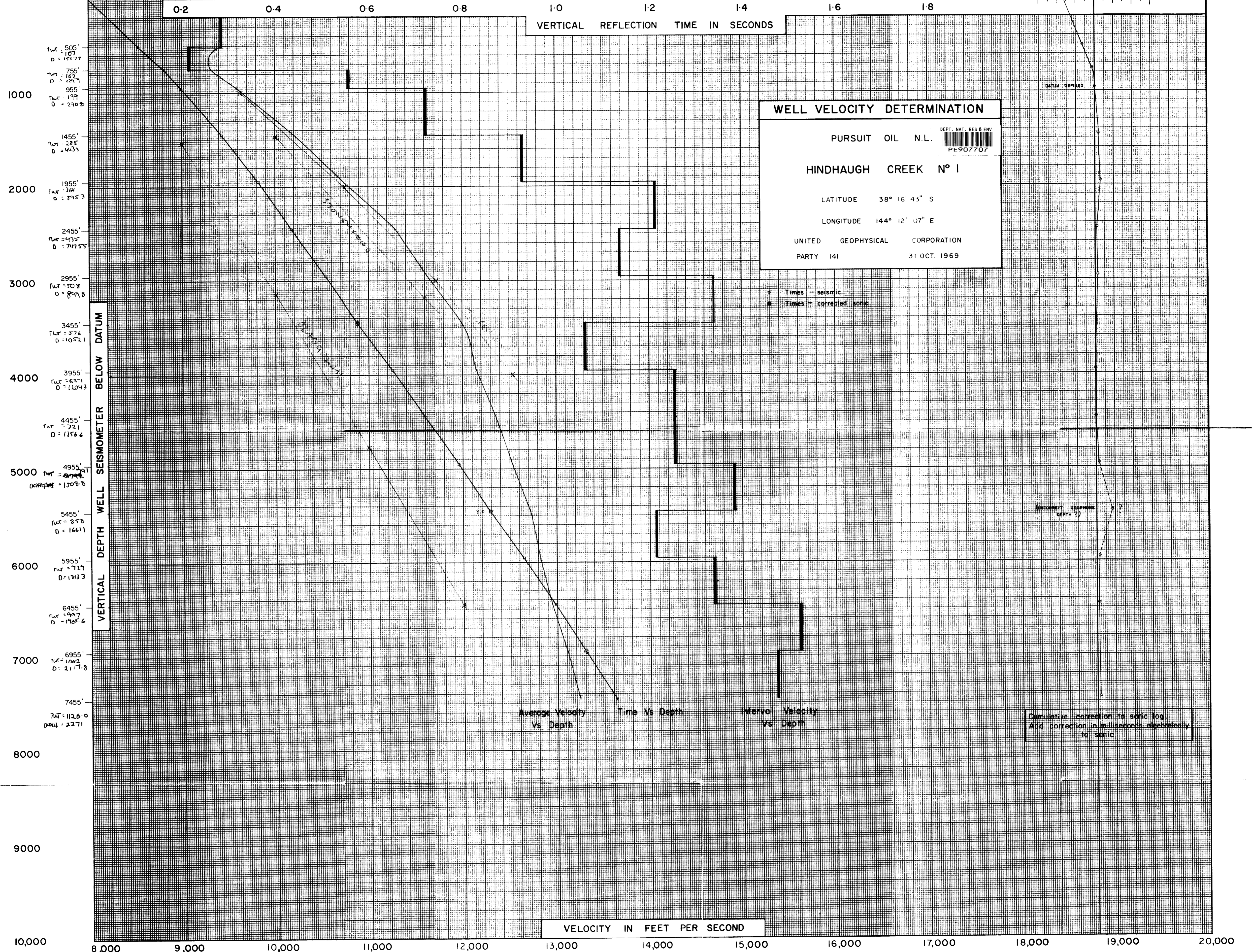
DATUM = Mean Sea Level. 0-1

ONE WAY TRAVEL TIME IN SECONDS

SONIC CALIBRATION  
-30 -20 -10 0 +10 +20 +30 Millisecs.

0.2 0.4 0.6 0.8 1.0 1.2 1.4 1.6 1.8

VERTICAL REFLECTION TIME IN SECONDS



**WELL VELOCITY DETERMINATION**

PURSUIT OIL N.L. DEPT. NAT. RES. & ENV.  
PE907707

HINDHAUGH CREEK N° 1

LATITUDE 38° 16' 43" S  
 LONGITUDE 144° 12' 07" E

UNITED GEOPHYSICAL CORPORATION  
 PARTY 141 31 OCT. 1969

• Times - seismic.  
 \* Times - corrected sonic

Cumulative correction to sonic log.  
 Add correction in milliseconds algebraically  
 to sonic.

Average Velocity Vs Depth  
 Time Vs Depth  
 Interval Velocity Vs Depth

VERTICAL DEPTH WELL SEISMOMETER BELOW DATUM

505'  
TWT = 107  
D = 153.77

755'  
TWT = 162  
D = 223.9

955'  
TWT = 179  
D = 290.8

1455'  
TWT = 285  
D = 443

1955'  
TWT = 364  
D = 595.3

2455'  
TWT = 435  
D = 747.55

2955'  
TWT = 508  
D = 899.8

3455'  
TWT = 576  
D = 1052.1

3955'  
TWT = 651  
D = 1204.3

4455'  
TWT = 721  
D = 1356.6

4955'  
TWT = 794  
D = 1508.8

5455'  
TWT = 858  
D = 1661.1

5955'  
TWT = 927  
D = 1813.3

6455'  
TWT = 997  
D = 1965.6

6955'  
TWT = 1062  
D = 2117.8

7455'  
TWT = 1126.0  
D = 2271

VELOCITY IN FEET PER SECOND

8,000 9,000 10,000 11,000 12,000 13,000 14,000 15,000 16,000 17,000 18,000 19,000 20,000