



**BOREHOLE COMPENSATED**  
**SONIC LOG - GAMMA RAY**

REF. AMT. RES. & ENV.  
 PEG04450

COUNTY AUSTRALIA  
 FIELD or LOCATION WILDCAT HAWKESDALE #1  
 WELL \_\_\_\_\_  
 COMPANY SHELL DEVELOPMENT PTY. LTD.  
 W.C.R. Encl. 4c  
 COMPANY SHELL DEVELOPMENT PTY. LTD.  
 WELL HAWKESDALE #1  
 FIELD WILDCAT OTWAY BASIN  
 COUNTY AUSTRALIA STATE VICTORIA  
 LOCATION LATTITUDE 38° 04' 51.4" S  
 LONGITUDE 142° 17' 57.4" E  
 Other Services: TES, COH, CST, C1S.  
 Sec. \_\_\_\_\_ Twp. \_\_\_\_\_ Rge. \_\_\_\_\_  
 Permanent Datum: HSL Elev. 0  
 Log Measured From: RT 443 Ft. Above Perm. Datum  
 Drilling Measured From: RT 443  
 Date 28 DEC 69  
 Run No. 1  
 Depth—Driller 5820  
 Depth—Logger 5820  
 Btm. Log Interval 5820  
 Top Log Interval 1222 @ 5/8  
 Casing—Driller 1222 @ 5/8  
 Casing—Logger 3222  
 Bit Size 3 1/2  
 Type Fluid in Hole FRESHWATER 6% DIESEL OIL  
 Dens. Visc. \_\_\_\_\_  
 pH Fluid Loss 0.2 59 ml  
 Source of Sample FLOWLINE  
 Ra. @ Meas. Temp. 2.3 @ 54 °F  
 Ra. @ Meas. Temp. 1.7 @ 62 °F  
 Ra. @ Meas. Temp. 2.6 @ 58 °F  
 Source: Rmt Rmc  
 Rm @ BHT \_\_\_\_\_  
 Rmt @ BHT \_\_\_\_\_  
 Rmc @ BHT \_\_\_\_\_  
 C.D. SPRING S.O.:  
 Equip. Used: CART. No. SLC-A 74 GNC-H 231  
 PANEL No. SLP-A 68 GNP-D 814  
 SONDE No. SLS-A 78  
 SLO-A 60  
 CALIBRATION: BACKGND. SOURCE GALV. INCR. SENS. TAP SENS. TAP TIME RECORDING  
 CPS. CPS. DIVISIONS (FOR CAL.) (RECORD) CONST. SPEED (FT./MIN.)  
 GAMMA RAY: 40 440 8.25 400 300 2 30

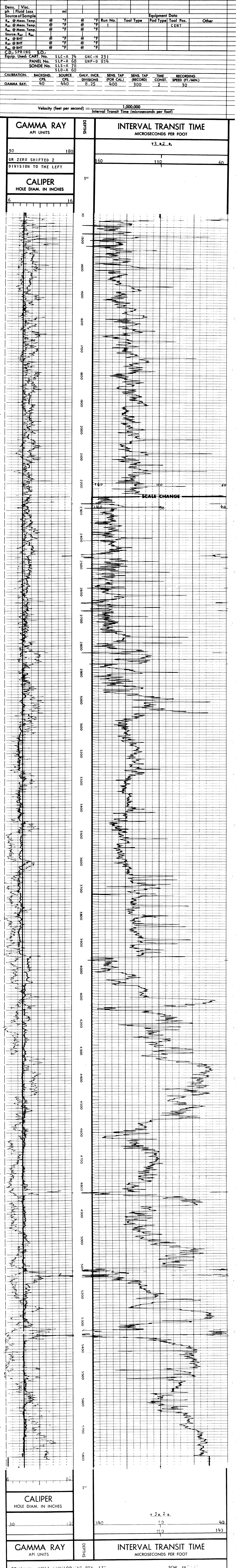
REMARKS CALIPER RECORDED 7 1/2' TOO HIGH.

| Changes in Mud Type or Additional Samples |            | Scale Changes |                           |
|---|------------|---------------|---------------------------|
| Date                                      | Sample No. | Type Log      | Depth                     |
|   |            | BHC           | 2250                      |
|   |            |               | Scale Up Hole 160-110-60  |
|   |            |               | Scale Down Hole 140-90-40 |

| Equipment Data |           | Tool Pos. |           | Other |  |
|----------------|-----------|-----------|-----------|-------|--|
| Run No.        | Tool Type | Pad Type  | Tool Pos. | Other |  |
| 1              |           |           | CENT      |       |  |

C.D. SPRING S.O.:  
 Equip. Used: CART. No. SLC-A 74 GNC-H 231  
 PANEL No. SLP-A 68 GNP-D 814  
 SONDE No. SLS-A 78  
 SLO-A 60  
 CALIBRATION: BACKGND. SOURCE GALV. INCR. SENS. TAP SENS. TAP TIME RECORDING  
 CPS. CPS. DIVISIONS (FOR CAL.) (RECORD) CONST. SPEED (FT./MIN.)  
 GAMMA RAY: 40 440 8.25 400 300 2 30

Velocity (feet per second) =  $\frac{1,000,000}{\text{Interval Transit Time (microseconds per foot)}}$



COMPANY SHELL DEVELOPMENT PTY. LTD. SCHL. FR. 311  
 WELL HAWKESDALE #1 SCHL. TD. 311  
 FIELD WILDCAT OTWAY BASIN DRLR TD. 5020  
 COUNTY AUSTRALIA STATE VICTORIA Elev. KB 443  
 DF 13.61  
 GL 420