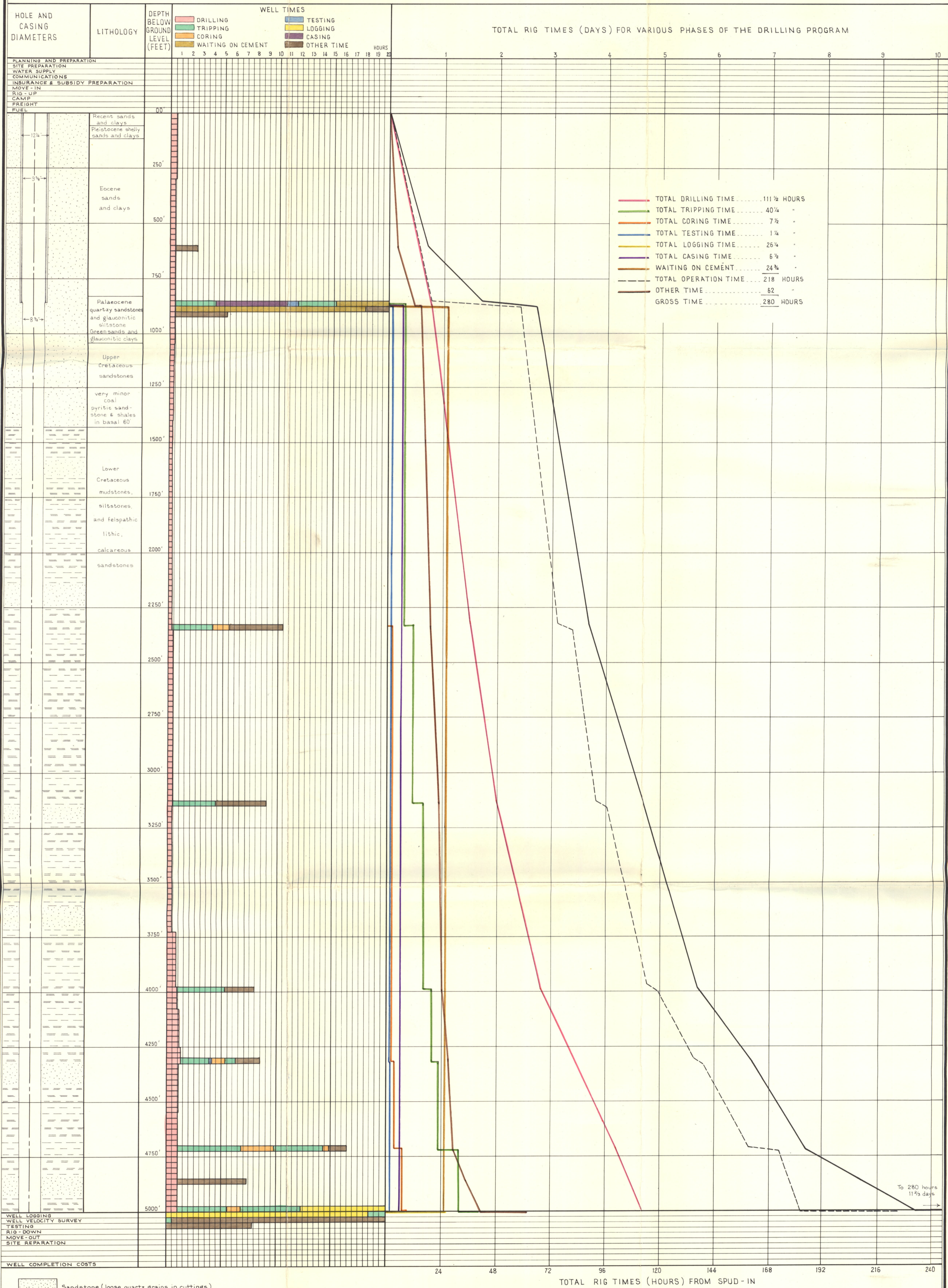


DRILLING PERFORMANCE CASTERTON No 2 WELL

(LAT. 37° 39' 05" — LONG. 141° 13' 20")

ANALYSIS OF PENETRATION RATES AND RIG OPERATING TIMES FROM SPUD-IN TO 5000 FEET



WELL LOGGING
WELL VELOCITY SURVEY
TESTING
RIG - DOWN
MOVE-OUT
SITE REPAIRATION

WELL COMPLETION COSTS

Sandstone (loose quartz grains in cuttings)
 Mudstone and claystone