

JOB No _____

COMPANY BEACH PETROLEUM N.L.

WELL CALLISTA # 1 W.C.R. Vcl 2.

FIELD WILDCAT

STATE VICTORIA

DEPTH SCALE _____

LOCATION PEP 104

LATITUDE 038° 28' 00.22" S

LONGITUDE 142° 50' 12.64" E

Permanent Datum M.S.L.

Log Measured from K.B. 81.9m

Drilling Measured from K.B. 81.9m

Date 05-04-88

Run No ONE

Depth-Order 1800.0m

Bottom Logged Interval 1798.0m

Top Logged Interval 848.3m

Carriage-Order 9.578 @ 299.0m

Dr. Size 8 1/2"

Type Fluid and Name F/WATER GEL POLYMER

Density and Viscosity 1.11g/cc 4.8

Pr and Fluid Loss 9.5 6.8 cc

Source of Sample FLOMLINE

Run @ Mass Temp 2.0 @ 21.3°C

From @ Mass Temp 1.8 @ 21.3°C

From @ Mass Temp 2.5 @ 20.7°C

Stature of Run and Time MEAS @ 63.8°C

Run @ Bit* 0.97 @ 63.8°C

End Circulation 06:30

Logger on Bottom 22:26

Max Rec Temp 63.8/63.8°C

Estud. No and Location DDL 7 ROMA

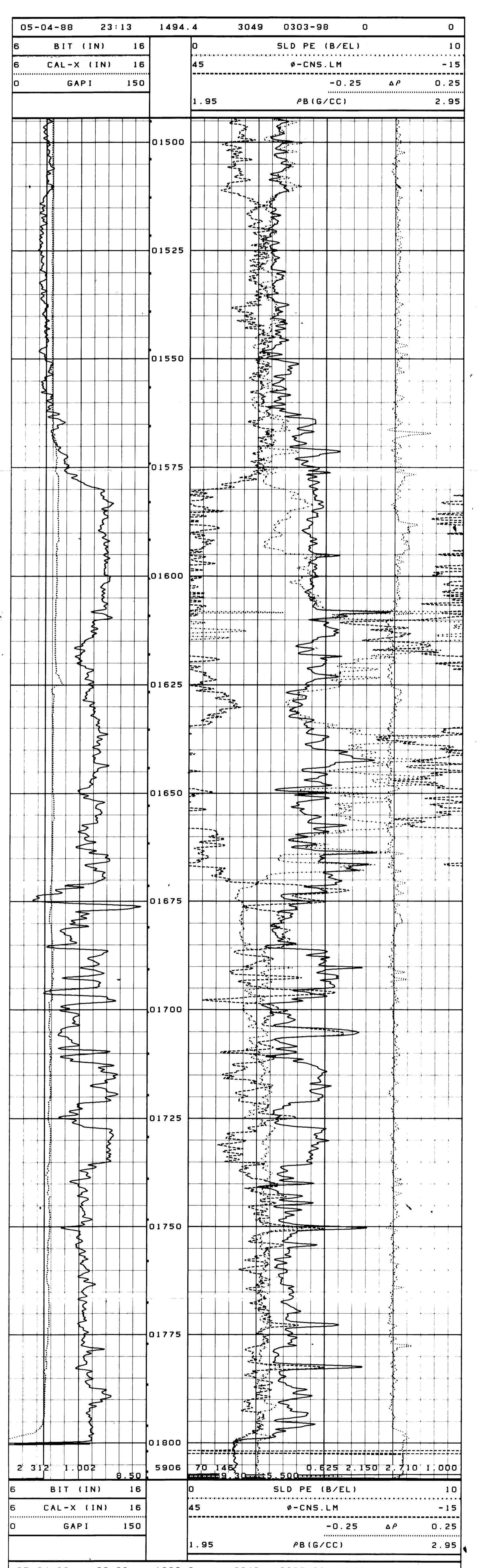
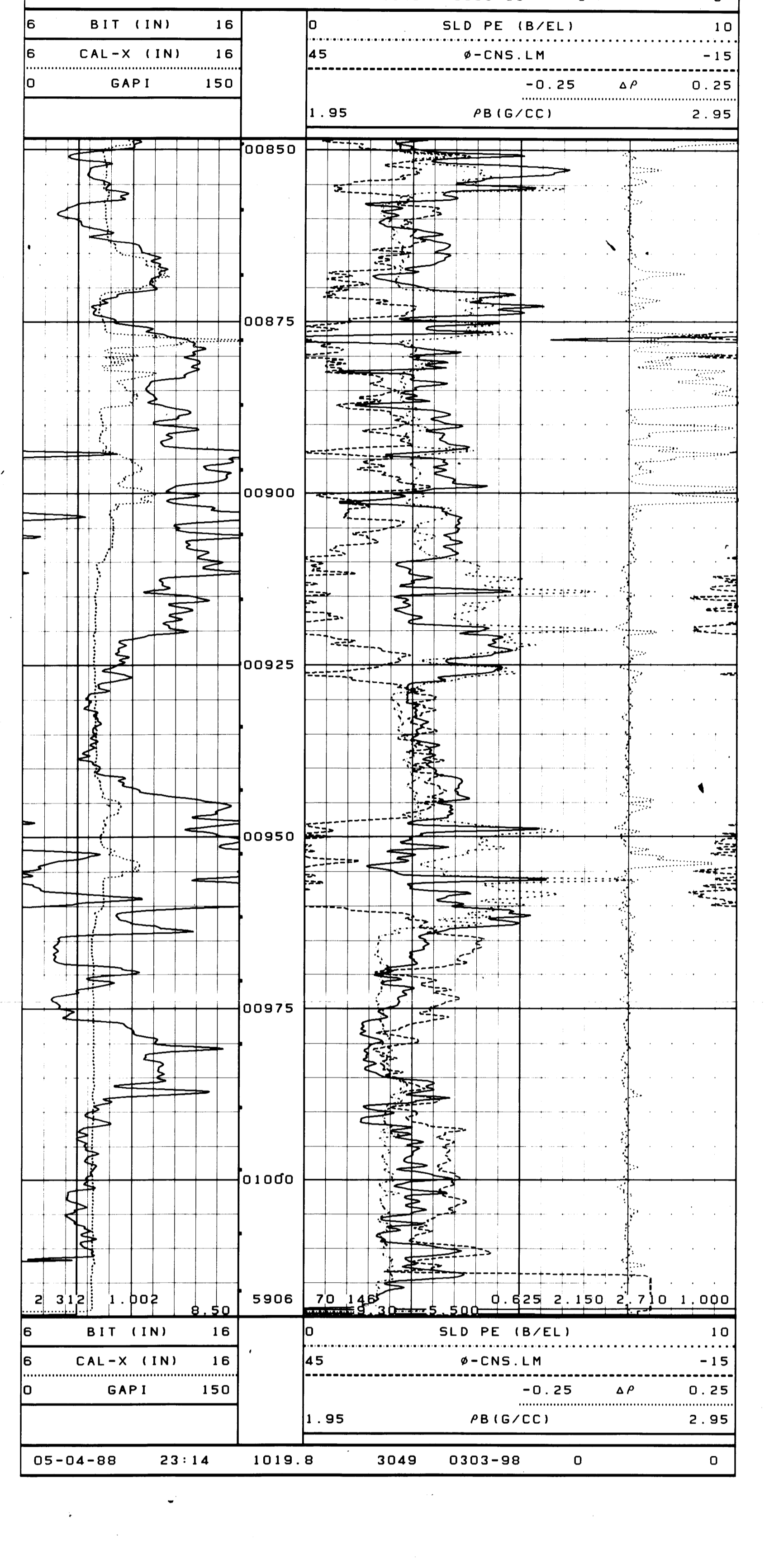
Recorded By R. RUSSELL

Witnessed By B. RAYNER

REMARKS: LAST CIRCULATION WAS FOR 1.5 HOURS. THERMOMETERS 9.8m ABOVE I.D. NO BARITE IN MUD. NEUTRON DATA RECORDED TEMPERATURE CORRECTED.

NOTICE All interpretations are opinions based on inferences from electrical or other measurements and we cannot, and do not, guarantee the accuracy or correctness of any interpretation, and we shall not, except in the case of gross or willful negligence on our part, be liable or responsible for any loss, costs, damages or expenses incurred or sustained by anyone resulting from any interpretation made by one of our officers, agents or employees. These interpretations are also subject to our General Terms and Conditions as set out in our current Price Schedule.

GEARHART PTY. LTD.



Company BEACH PETROLEUM N.L.

Well CALLISTA # 1

Field WILDCAT

State VICTORIA