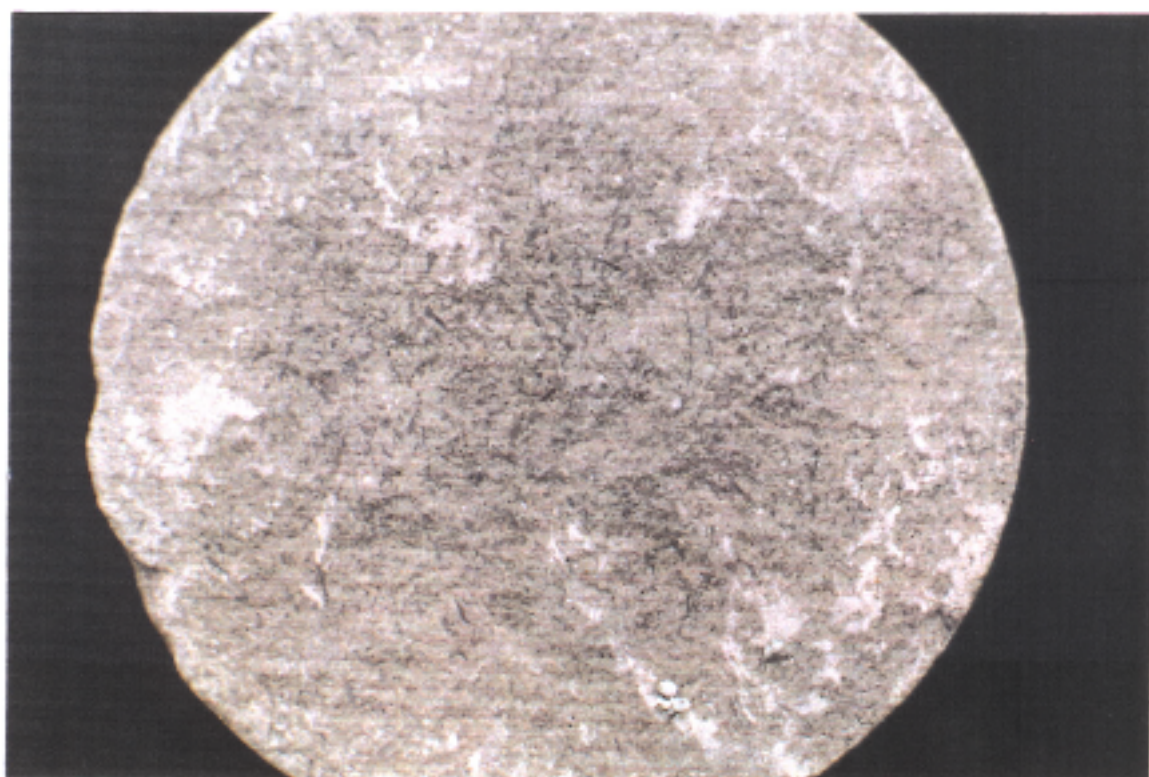




Detailed section of Core 3: Showing a medium grey to medium dark grey siltstone, argillaceous to arenaceous, moderately hard, micaceous, quartzose, occasional large quartz grains, occasional light sandstone laminae, occasional claystone laminae, carbonaceous specks and occasional fossil plant material.



Section through Core 3: This slice through the core at approximately 1787m shows a clayey siltstone with embedded fossil plant material.

**PLATE 11**

DEPT. NAT. RES & ENV



PE907910