

COMPOSITE WELL LOG

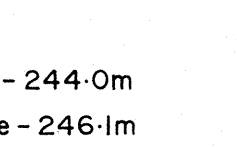
SOUTH AUSTRALIAN OIL & GAS CORPORATION, COMSERV (779)

ROBINVALE 1 W.C.R.

MURRAY BASIN, VICTORIA

Location : LATITUDE - 34° 49' 13.44" S
 LONGITUDE - 142° 41' 04.16" E
 SEISMIC - 81-B4 (425)

Geologist : R.J. SUTTILL
 Report : R.J. SUTTILL



Map : MU 000.275 (ROBINVALE 1 PROSPECT SHEET) Composite Log : R.J. SUTTILL

Petroleum Tenement : P.E.P. 106 (VIC.)

Electric Logs :
 SUITE No. 1 : MCS 83.6m - 244.0m

Elevation : GL 74m KB 78.63m
 MSL 0m PORT ADELAIDE

NS Surface - 245.0m

Total Depth : 245.67m (Driller) 246.10m (Logger)

FE 86.5m - 244.0m

Date Spudded : 28th JUNE 1983

SP-RES 87.0m - 245.0m

Date Completed : 1st JULY 1983

10 cm = 20m

Well Status : PLUGGED AND ABANDONED

ENCLOSURE 1

Drafted : R. SCOTT

Date : AUGUST 1983

Drawing No. RB 001 2947

LEGEND

CORE

CI C - (No) Core Number
 No Recovery

PLUG

No Recovery

CASING SHOE

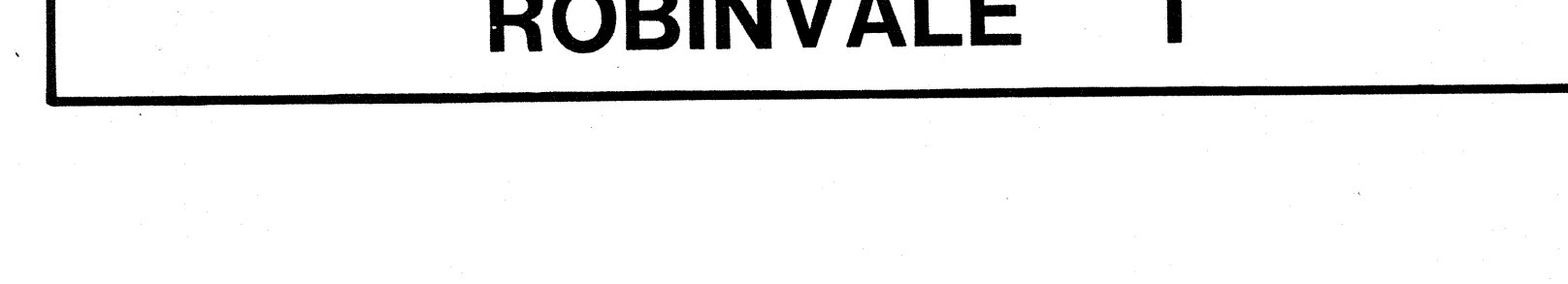
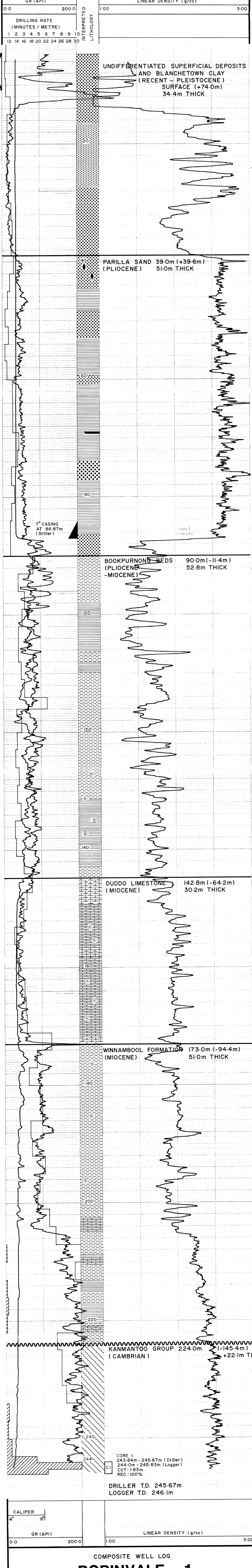
▲

LITHOLOGY

- 1 QUARTZ SANDSTONE
Very coarse grained
- 2 Coarse grained
- 3 Medium grained
- 4 Fine grained
- 5 Very fine grained
- CALCAREOUS SANDSTONE
- SILTSTONE (CARBONACEOUS)
- CLAYSTONE
- COAL
- LIMESTONE
- DOLOSTONE
- MARL
- PHYLLITE, SLATE
- GLAUCONITE
- PYRITE
- FOSSILS
- CHERT

ALL DATA CORRECTED TO LOG DEPTHS

GAMMA RAY - LINEAR DENSITY LOG



COMPOSITE WELL LOG ROBINVALE 1