

Schlumberger

PERTH COMPUTING CENTRE

DEPT. NAT. RES. & ENV.  
PE605006

# VELOCITY PROFILE

Using the following logs:  
CALL, RHOB, DT & GR

Company: BEACH PETROLEUM NL

Well: WRIXONDALE - 1 *Geogram Primary Logs*

Field: WILDCAT

Country: AUSTRALIA

Reference No: 540421 Interval: 990.00 to 300.00

Date Logged: 19-OCT-1985 Date Processed: 12-DEC-1985

Location: 037 59 42.8 S 147 29 48.1 E

Elevations: KB: 262 M DF: 26.0 M GL: 22.2 M

Permanent Datum: MSL Depth Units: METRES

FOLD HERE The well name, location and borehole reference data were furnished by the customer.

All interpretations are opinions based on inferences from electrical or other measurements and we cannot, and do not guarantee the accuracy or correctness of any interpretations, and we shall not, except in the case of gross or willful negligence on our part, be liable or responsible for any loss, costs, damages or expenses incurred or sustained by anyone resulting from any interpretations made by any of our officers, agents or employees. These interpretations are also subject to Clause 4 of our General Terms and Conditions as set out in our current Price Schedule.

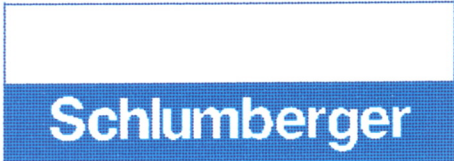
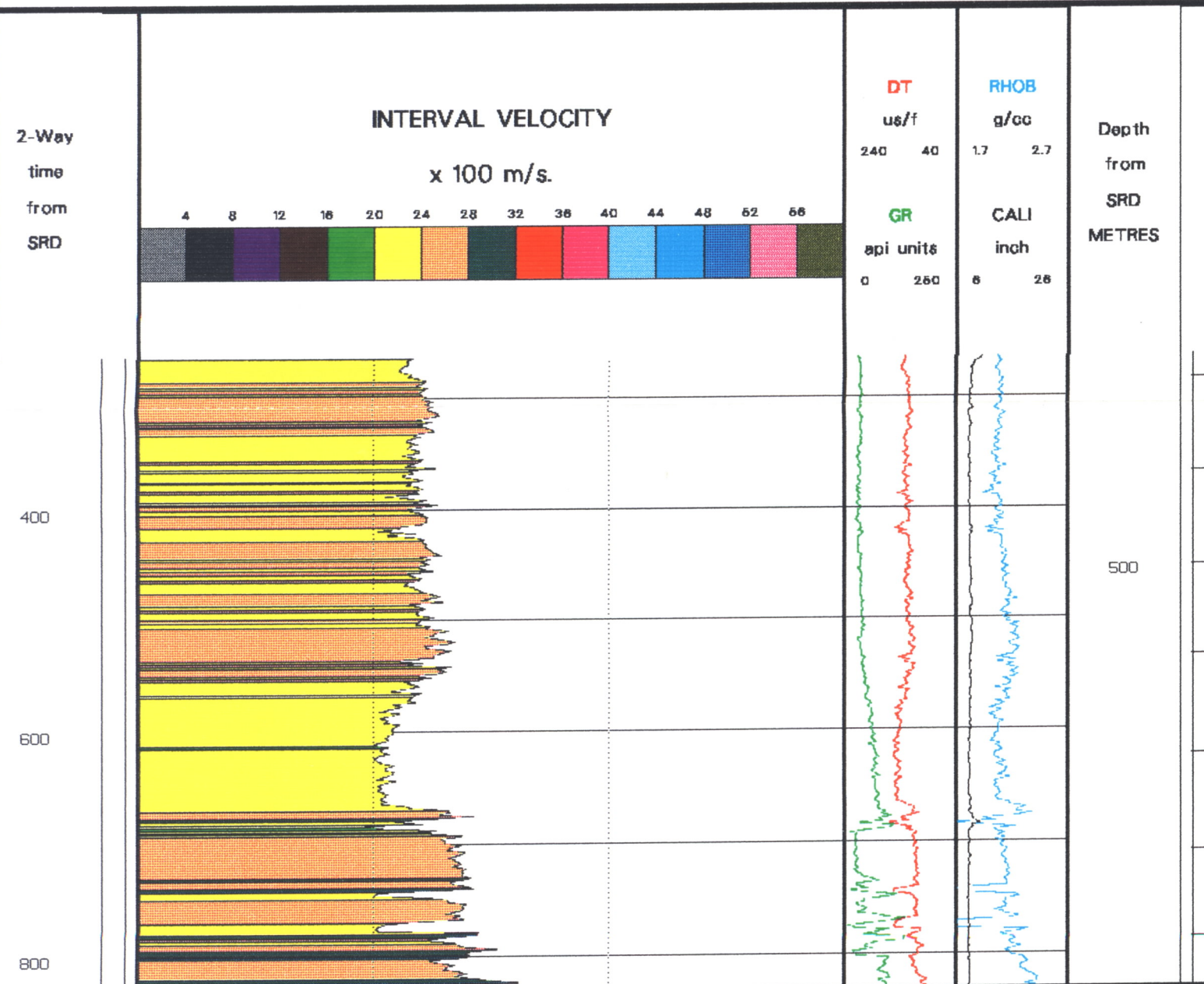
FIELD RECORDING: Engineer: E. ASTRACHAN Location: QEA Program Version: VSP/GEO

COMPUTATION: Analyst: M. SANDERS Centre: ASJ Baseline: 14.2

MUD MEASUREMENTS:

R<sub>m</sub> = 1.401 R<sub>mf</sub> = 1.399 BHT = 136.0 Bit Size = 8.5

Remarks: VERTICAL TIME SCALE 7.5 IN/SEC



VELOCITY PROFILE