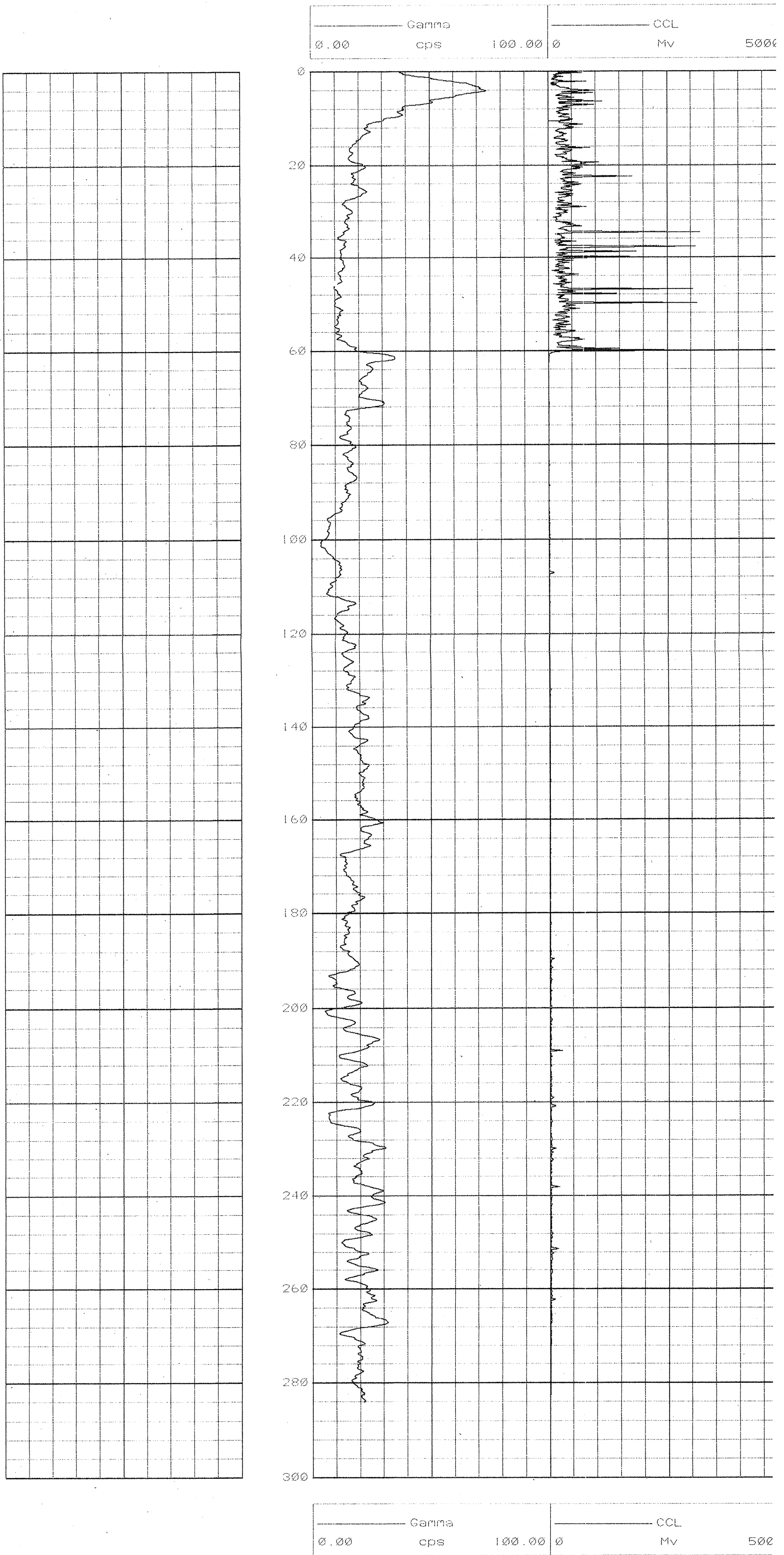


Lakes 011
 Bunga Creek 1
 24th November, 2002.

DEPT. NAT. RES & ENV

 PE651031



DISCLAIMER

All interpretations are opinions based on inferences from electrical or other measurements and Scientific Drilling cannot and does not guarantee the accuracy or correctness of any interpretations, and Scientific Drilling shall not, except in the case of gross negligence or willful conduct on Scientific Drilling's part, be liable or responsible for any loss, cost, damage or expense incurred or sustained by anyone resulting from any interpretations made by any of Scientific Drilling's officers, agents or employees. These interpretations are also subject to Scientific Drilling's General Terms and Conditions set out in Scientific Drilling's current Price Schedule.

DISCLAIMER