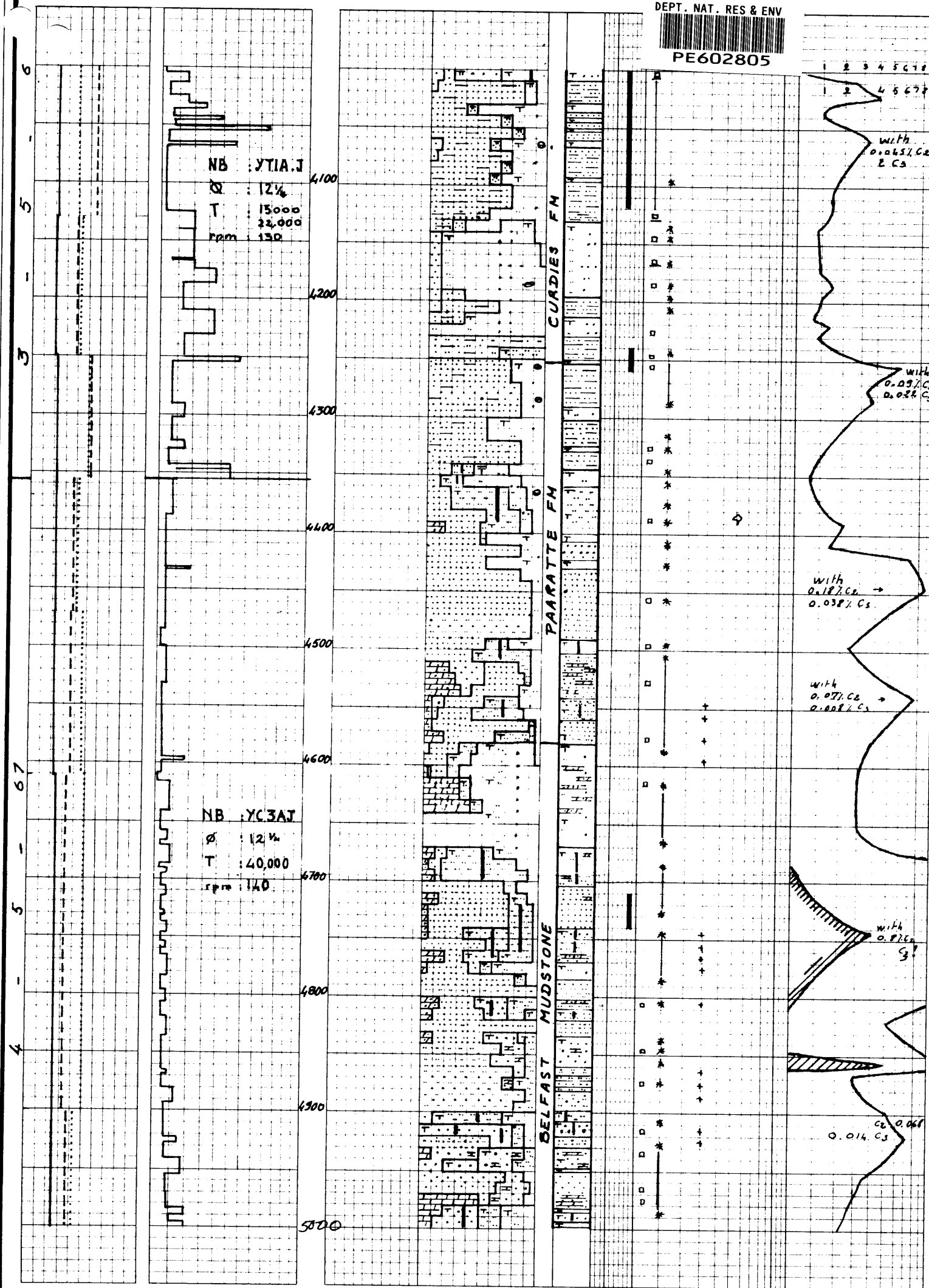




PE602805

PECTEN - 1A



Minor Clst, dkgy-blk, carb, soft

4085 to 4088: Interbedded:  
Clst, dkgy, cons, earthy, with  
occasional carbonate ooids  
and Qz S, E, cl-cl, Py.

4088 to 4130:  
Qz S as above Minor Clst

4130 to 4250:  
Clst dkgy-gygn, soft, silt-S, blk  
carbonized grains, Glc, occasio  
carbonate ooids  
and beds of f, cl, S becoming silt,  
cl, S at base.

4250 to 4346  
Qz S, F, (ang), ang, clear, srt, cl  
Minor Clst as above

4348 to 4357:  
Sh, dkgy brn, blk, carb, silt S,  
Glc, grading to cl Sst and cl Sst

4357 to 4500:  
Mainly Qz S, silt F-F, ang, srt  
with at top & bottom  
Sst, gy brn, carb, cl, glc,  
and minor Sh, (gn)-gy, silt, in  
part S, grading to cl Sst  
Stringers of Dol, beige, silt S, glc.

4500 to 4580:  
Sst and S as above with abun-  
dant stringers of  
Dol, beige, micr xln, s, glc

4580 to 4700:  
Clst, (gy), soft, silt-S, Glc and  
grains of gn Sh  
Frequent stringers? of Dol as  
above

4700 to 5180:  
Mainly Qz S, silt-F & F-F, interbed-  
ded with  
Sst, dirty wh, f ang clear Qz,  
srt, carb, mic, thin mic layers  
tight matrix, wh cl cmt. Por  
and  
Sst, dol, beige, f-med, ang Qz,  
(srt)-srt, Glc, abundant  
dol cmt, (por)  
grading to  
Dol, s-s, glc and grains of  
gn Clst  
and minor  
Sst, gy brn, carb, cl, glc  
and Clst, gy, soft, silt, s, glc.