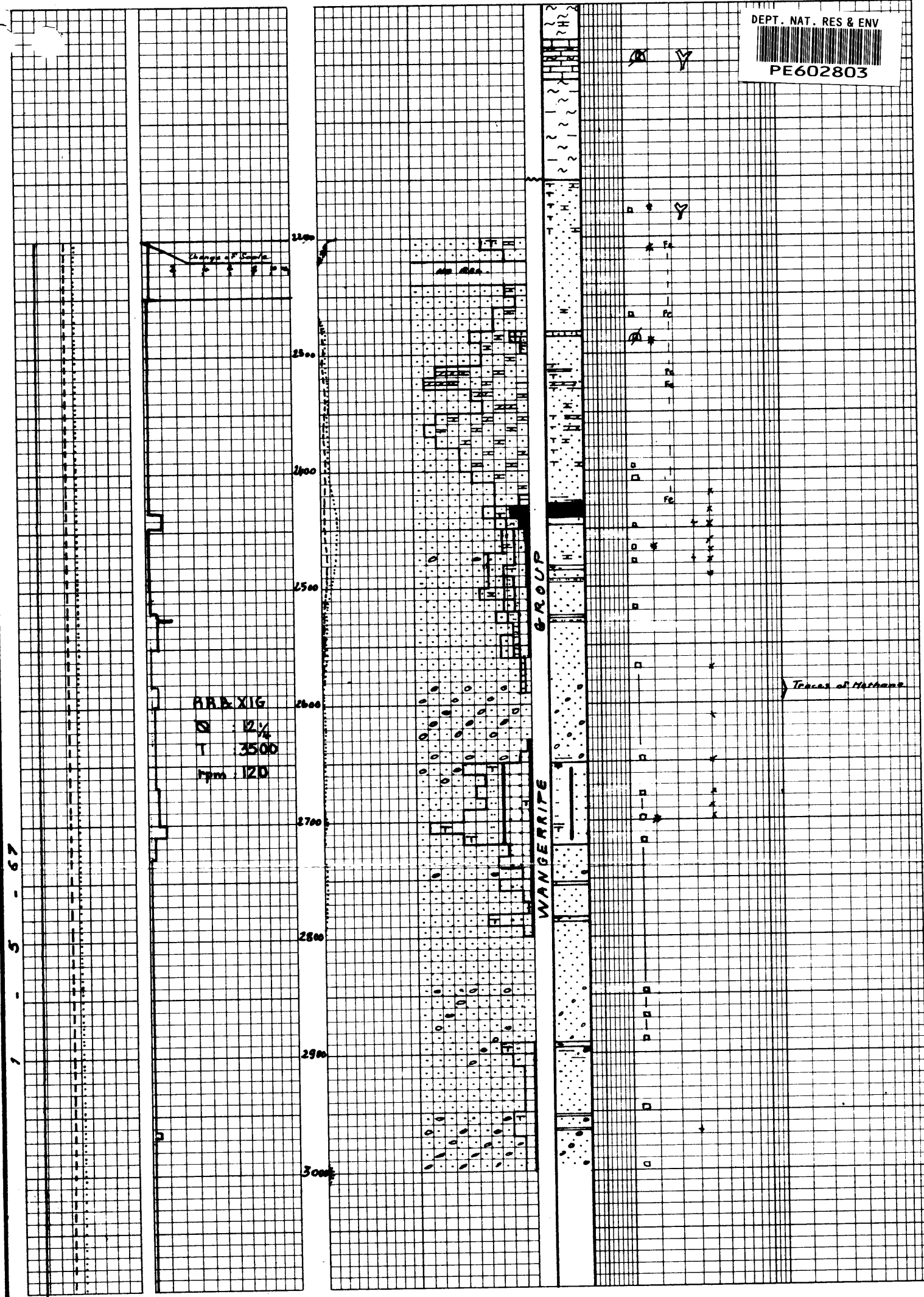


DEPT. NAT. RES &amp; ENV



PE602803



2150 to 3168:

Qz s. med crs with pob zones, (ang) (rnd) with minor rnd & ang, (srt)-srt, fros - shiny, yellowish at top, iron oxide stained, often (corroded), becoming yel, clear, minor milky & bl below 240, mainly clear + minor milky & bl below 250, with frequent Pyr inclusions - Por assumed.

Below 3080 mainly E-F Qz S (rnd) srt.

At top of unit several conc. zones of: Sst, suc, reddish, pk and whitish-pk below 2260, tan below 2200, med-crs (rnd) yel-pk Qz, in part clear, fros - silky, in part iron oxide stained, (srt), (cons), rnd - abundant pk - ornig calc xl at top, dol xl below 2310, frequent rnd dk brn small Grn (Lmn?). Tr Glc, calc cmt (cl). (por) - por. Occasional stringers of s in crs xln Dol.

At 2280: thin bed of Lst, wh, crystallised in part dol. Ech debris and E-F Qz.

At 2430: Lig, arg, grading to lig Sh, (fry) silt. Also down to 2590: Minor Clst, gy bl, soapy lumpy, silt (Calc xl) and: Silt gy bl, cl

2650 to 2720: Sh, dk brn - blk, carb silt (s) (calc) (fis) - platy. Minor Mic.

From 2896 to 3080 minor Sh, dk brn blk, (fis) - platy silt, s, carb, (calc)