

# BHP Petroleum

## Log Interpretation

Petrophysics Group

Well : **LOCH ARD-1**  
 Company : **BHP**  
 Field : **Wildcat**  
 Permit : **Vic/PS1**  
 State : **Victoria**



Location: Otway Basin

SCALE  
1 : 500

Permanent Datum MSL Elev. 0.0m  
 Log measured from RT Ris: Byford  
 Drillings measured from RT

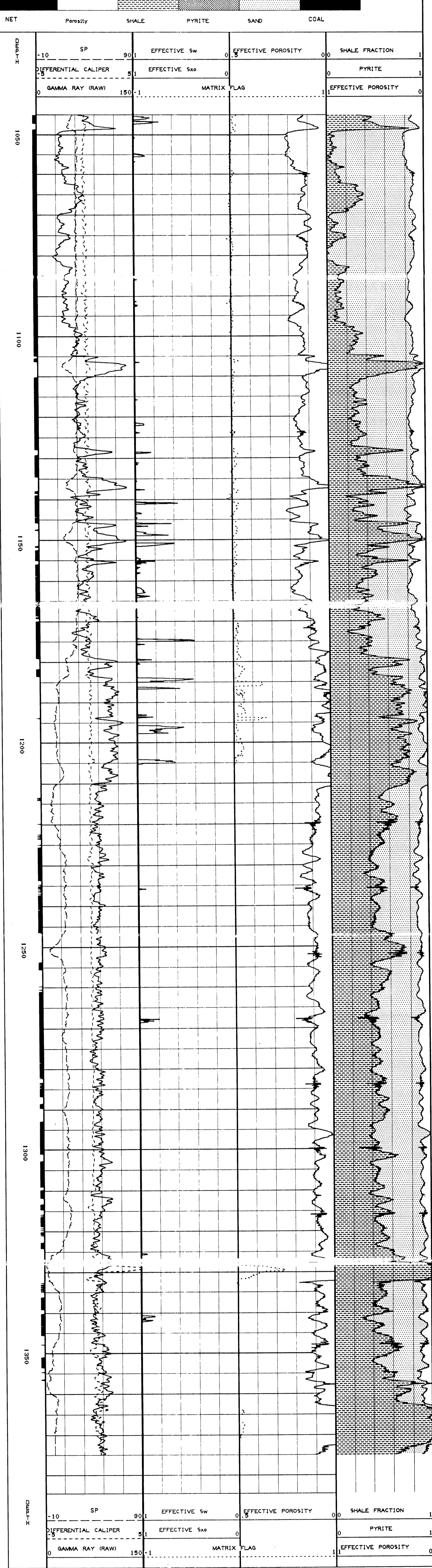
KB m  
 RT 25.0m  
 CL -75.0m

Date Processed 22 Jul 94  
 Suite Used 2  
 Date Logged 27 Oct 93

Top Interp Interval 1045.0m  
 Bot Interp Interval 1375.0m  
 Interp Model JHHSZ  
 R<sub>w</sub> @ 25 DegC 0.24  
 Equiv NACL conc. ppm 25,000  
 Rmf @ 25 DegC 0.065  
 Equiv NACL conc. ppm 110,000

Density & neutron logs affected by ribbed hole caused by bent drill collar

Petrophysicist: M.J. Wolker



WELL : LOCH ARD-1

SUMMARY OF RESULTS

CUT OFFS USED

Porosity	≧	0.150
Vshale	≧	0.500
Water Saturation	≧	1.000

ZONE	DEPTH MD	GROSS	NET	N/G	POR	SW	E.P.C. (m)	E.H.C. (m)
Sherbrook	585.000 - 871.000	286.0	193.7	68.	30.	100.	58.60	0.00
UP SHIPWk A	871.000 - 920.000	49.0	9.7	20.	19.	100.	1.85	0.00
UP SHIPWk B	1045.000 - 1205.000	160.0	117.3	73.	14.	99.	16.01	0.14
Otway	1205.000 - 1375.000	170.0	82.9	49.	10.	100.	8.00	0.03

N.B. \*\*\* All thicknesses are calculated using data recorded along hole. \*\*\*