

1:1000  
**MEASURED DEPTH**

BHP PETROLEUM  
COCH ARD-1  
VIC/PS  
OTWAY BASIN  
VIC/TARA  
AUSTRALIA

Company: BHP PETROLEUM  
Field: COCH ARD-1  
Country: AUSTRALIA  
State: VIC/TARA

Well Location: AT 38 deg 55' 56.638" SOUTH  
LONG: 143 deg 18' 55.138" EAST  
DIRECTIONAL SURVEYS

Other Services:  
AUSTRALIA

Company Rep. G. BLUNT  
Field Eng. A. SOMOFF

Company Rep. G. HOWARD  
Field Eng. M. SALE

Job # 1741-253

Drilling Contractor: DOLPHIN DRILLING RIG BYF-10

Bit Hole Record	To	Casing Record	To
25" 132.9m	132.9m	132.9m	132.9m
25" 132.9m	132.9m	SEAFLOOR	132.9m
12 1/4" 942.9m	942.9m	13 3/8"	942.9m
8 1/2" 942.9m	1397.8m	SEAFLOOR	942.9m

BHP PETROLEUM  
VIC/PS  
VIC/TARA  
AUSTRALIA

Well Location: AT 38 deg 55' 56.638" SOUTH  
LONG: 143 deg 18' 55.138" EAST  
DIRECTIONAL SURVEYS

Other Services:  
AUSTRALIA

Company Rep. G. BLUNT  
Field Eng. A. SOMOFF

Company Rep. G. HOWARD  
Field Eng. M. SALE

Job # 1741-253

Drilling Contractor: DOLPHIN DRILLING RIG BYF-10

Bit Run No.	5	6	7
<b>Eastman Teleco Data</b>			
Run Number	1	2	3
DHA Number	DHB 2288-02	DHB 2288-02	DHE 1674-18
Surface Gear	1S TR2300	1S TR2300	1S TR2300
Tool OD / Type	8.25"/DPR	8.25"/DPR	6.75"/DPR
<b>Run Data</b>			
Bit Diameter	12.25"	12.25"	8.50"
Measured Depth In	393m	942m	942m
Measured Depth Out	942m	942m	1397m
Top Interval Logged	392m	W/PER TRIP	938m
Btm Interval Logged	942m		1393m
Min/Max Inclination	0.3/1.50		1.2/2.5
Begin Log : Time	15:48 hrs		06:00 hrs
End Log : Date	23-10-93		26-10-93
End Log : Time	07:38 hrs		08:40 hrs
End Log : Date	24-10-93		27-10-93
Mud Data @ Depth	942m	942m	1397m
Mud Type	KCl/PHPA	KCl/PHPA	KCl/PHPA
Density from-to	1.05 - 1.10	1.08 - 1.10	1.08 - 1.10
Oil/Chlorides	50000 ppm	50000 ppm	50000 ppm
Mud/Water Ratio	0/100	0/100	0/100
Max Circ. Temp	39 deg C	26 Deg C	39 deg C
Company Rep.	G. BLUNT	G. BLUNT	G. HOWARD
Field Eng.	A. SOMOFF	M. SALE	A. SOMOFF

**Remarks**

**LOG MNEMONICS**

GRAM - Natural Gamma Ray, API Calibrated (RWD)  
TCOM - MWD Tool Temperature (RWD)  
RPCM - Resistivity Phase Difference, Borehole Corrected (RWD)  
RACH - Resistivity Amplitude Ratio, Borehole Corrected (RWD)  
RPPM - Resistivity Phase Difference, Dielectrically Corrected (RWD)  
RADM - Resistivity Amplitude Ratio, Dielectrically Corrected (RWD)  
RDCM - Resistivity Data Density Integrated (RWD)  
PDDM - Resistivity Data Density Integrated  
HBCS - Height On Bit (Surface)  
RPRS - Rate of Penetration (Surface)  
RPHS - Revolutions Per Minute (Surface)

**LOG ENVIRONMENTAL CORRECTIONS**

Gamma Ray: Normalised for Tool Size, Borehole Size, Sensor Type. Correction has been made for mud potassium content.

Resistivity: Normalised for Tool Size, Borehole Size, Mud Resistivity, Temperature. No correction has been applied for formation dielectric properties.

**Remarks**

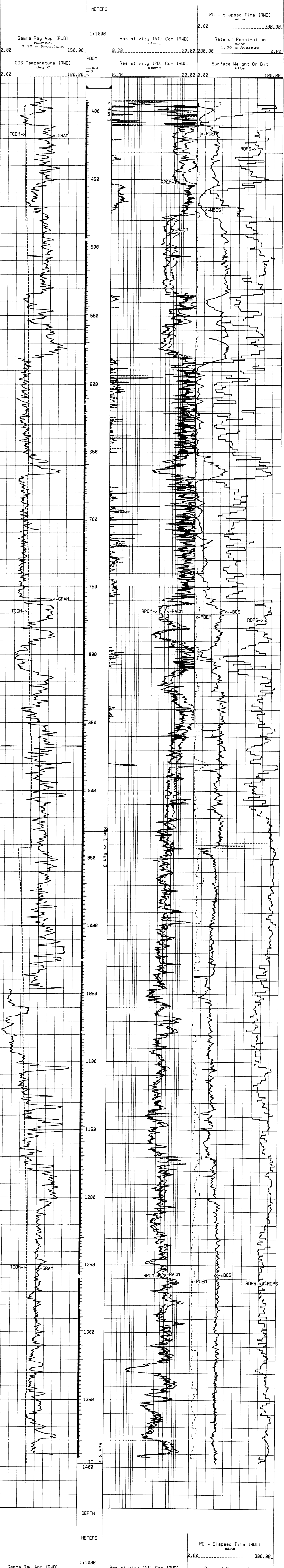
**TOOL & DATA ACQUISITION INFORMATION**

TELECO RUN NUMBER	1	2	3
Sensor to bit distance (M)	2.00	2.00	2.00
Bottom of Teleco Tool	7.79	7.79	7.79
Resistivity	0.00	0.00	0.00
Gamma Ray	0.00	0.00	0.00
Directional	0.00	0.00	0.00
Run Circulating Hours	16.00	1.50	32.00
RWD Memory Update Rate			
- Gamma Ray	5.00	5.00	5.00
- Resistivity	5.00	5.00	5.00

MWD Transmission Data Rate : -x 4 Splitphase (0.8 bits/second)  
Surface Logging System / Software : -M-Series / 1.33X  
 : -P-Series 2.01  
 : -HPUTIL

Surface data provided by : -Bit Depth.  
Drillbyte mudlogging unit. : -Rate of Penetration.  
 : -Height on bit.  
 : -RPM

Eastman Teleco does not guarantee the accuracy or correctness of interpretation provided in or from this log. Since all interpretations are opinions based on measurements, Eastman Teleco shall under no circumstances be responsible for consequential damages or any other loss, costs, damages or expenses incurred or sustained in connection with the use of any such interpretations. Eastman Teleco disclaims all expressed and implied warranties related to its service which is governed by Eastman Teleco's standard terms and conditions.



Gamma Ray App (RWD) MWD-API 0.30 m Smoothing	2.00	150.00
CDS Temperature (RWD) deg c	2.00	100.00
Resistivity (AT) Cor (RWD) ohm-m	2.00	20.00 200.00
Resistivity (PD) Cor (RWD) ohm-m	2.00	20.00 2.00
Rate of Penetration (RWD) m/hr 1.00 m Average	2.00	200.00
Surface Weight On Bit (RWD) Kibs	2.00	100.00
PD - Elapsed Time (RWD) mins	2.00	300.00