

Res Log

IDEAL Version: ID6_1C_03 <MD > Vertical Scale: 1:1000

Graphics File Created: 08-Oct-2001 16:3

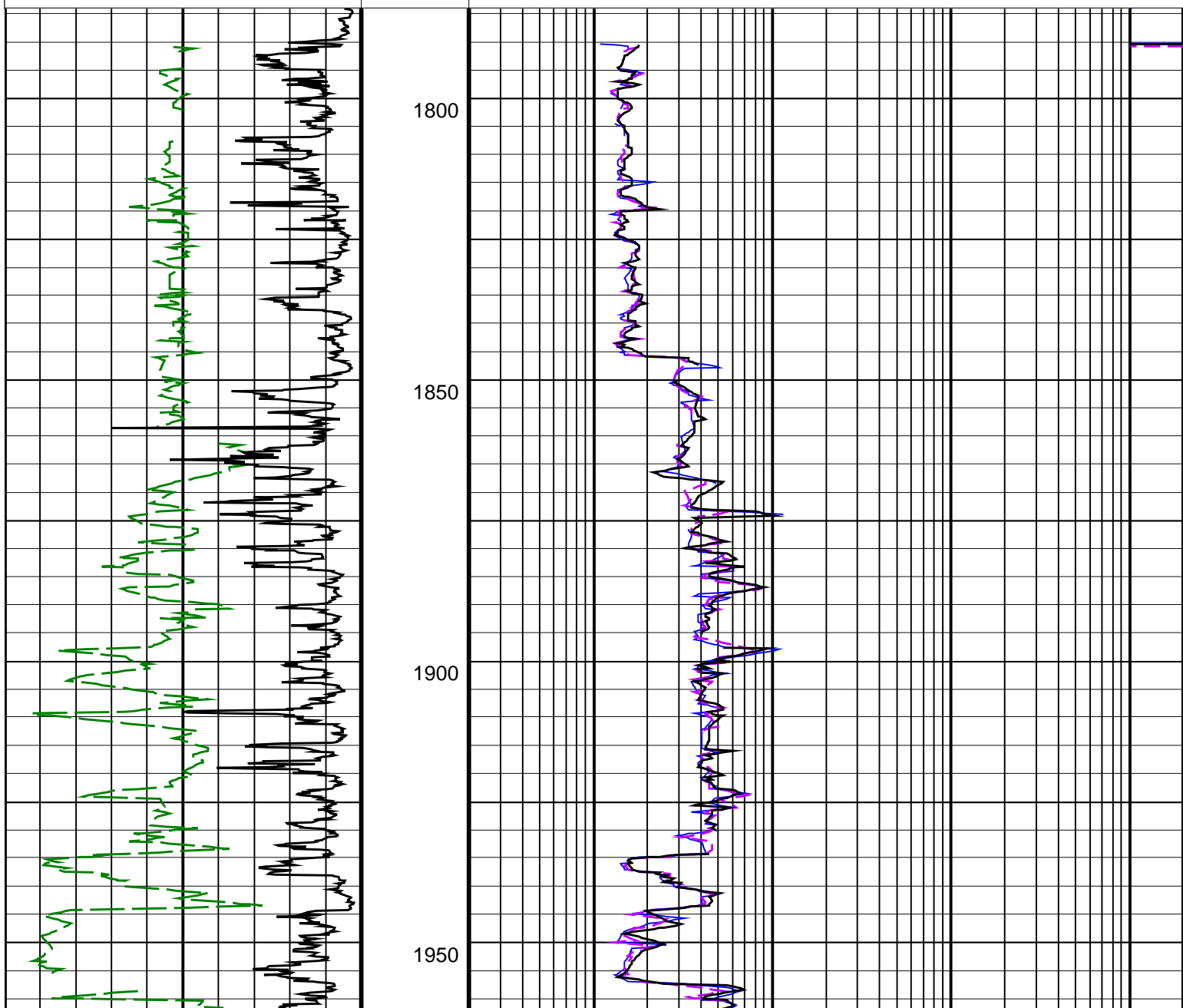
ARC Gamma Ray, Real-Time (ARC_GR_RT)
(GAPI) 0 200

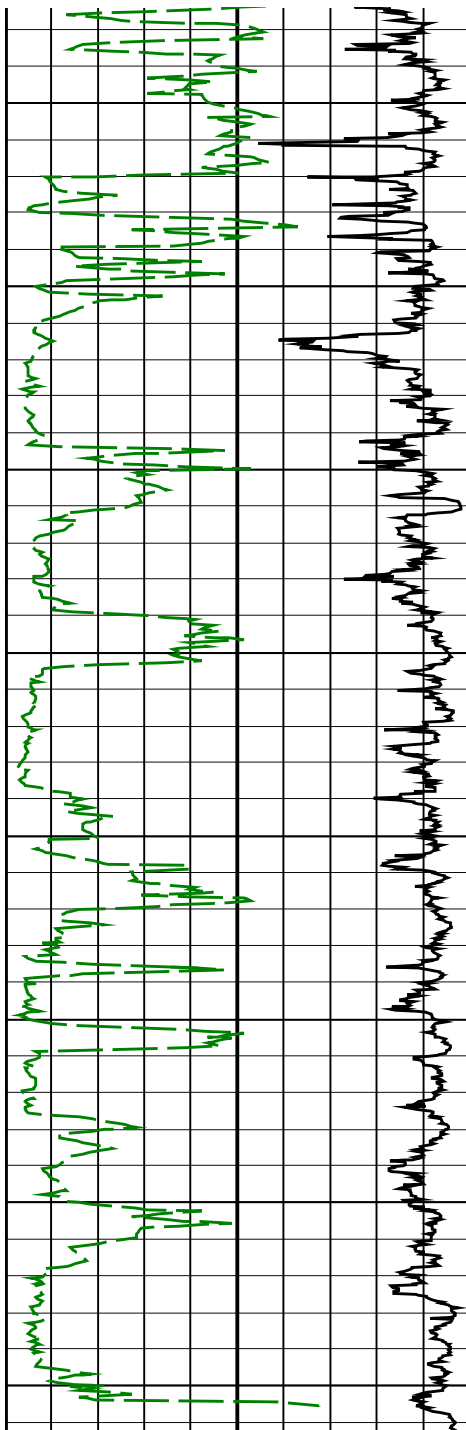
ROP*5 (ROP5)
(M/HR) 600 0

ARC5 Phase-Shift Resistivity 40-in. at 2 MHz, Real-Time (P40H_F)
(OHMM) 0.2 2000

ARC5 Phase-Shift Resistivity 28-in. at 2 MHz, Real-Time (P28H_F)
(OHMM) 0.2 2000

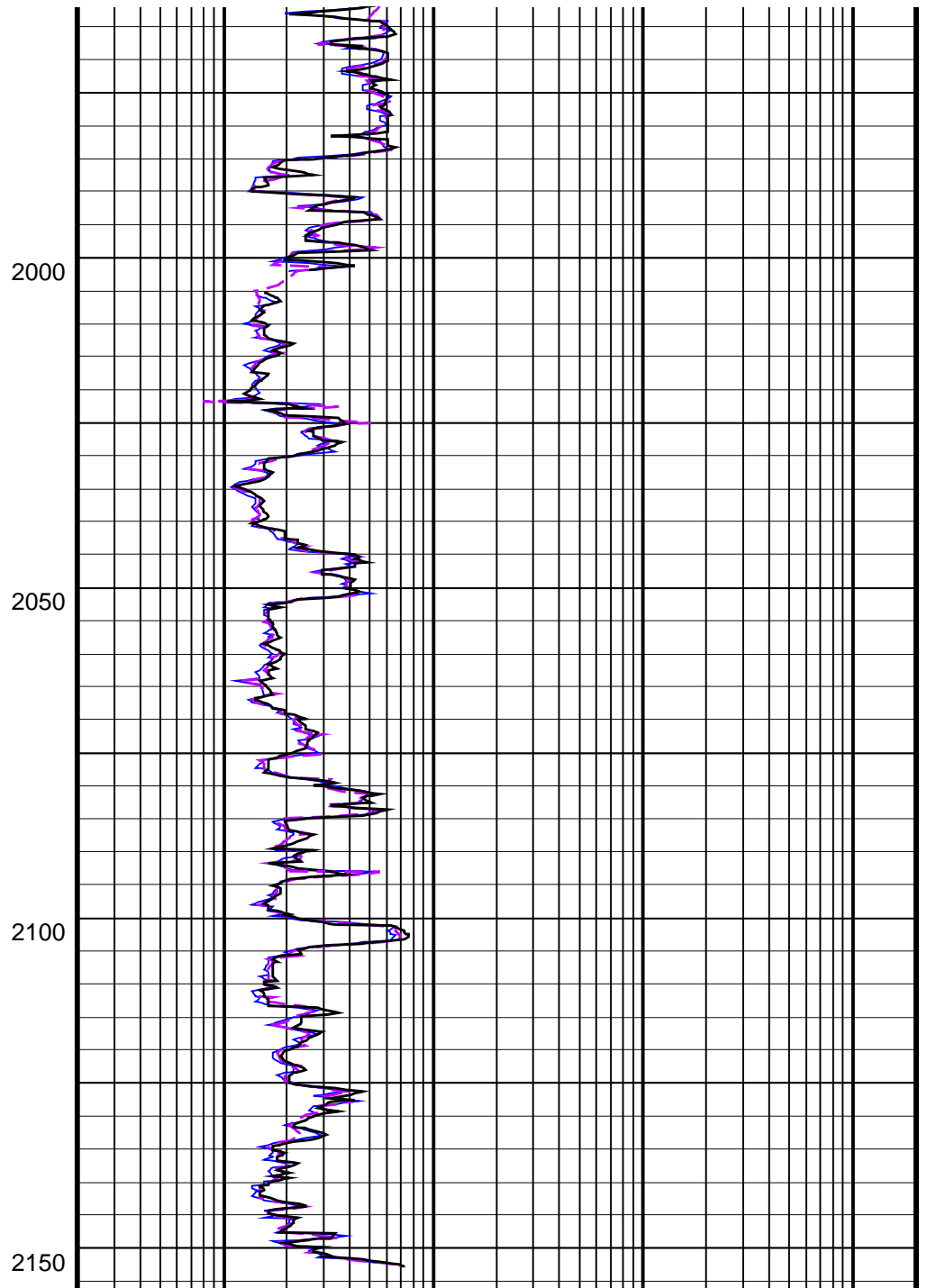
ARC5 Phase-Shift Resistivity 16-in. at 2 MHz, Real-Time (P16H_F)
(OHMM) 0.2 2000





ROP*5 (ROP5)
 600 (M/HR) 0

ARC Gamma Ray, Real-Time (ARC_GR RT)
 0 (GAPI) 200



ARC5 Phase-Shift Resistivity 16-in. at 2 MHz, Real-Time (P16H_F)
 0.2 (OHMM) 2000

ARC5 Phase-Shift Resistivity 28-in. at 2 MHz, Real-Time (P28H_F)
 0.2 (OHMM) 2000

ARC5 Phase-Shift Resistivity 40-in. at 2 MHz, Real-Time (P40H_F)
 0.2 (OHMM) 2000