

FINAL STACK

LINE: GAB1-92
S.P. 1 to S.P. 1036

AIR GUN

LEGEND
∇ = INTERSECTION
V = VELOCITY ANALYSIS
WATER DEPTH IN METRES

SE
SHOT DIRECTION = 315° DEGREES
1 KM
SCALE

4800% TIME SECTION (STK, TVF, AGC)

AUSTRALIAN AQUITAINE PETROLEUM
GABI SEISMIC SURVEY

AREA: VIC / P17

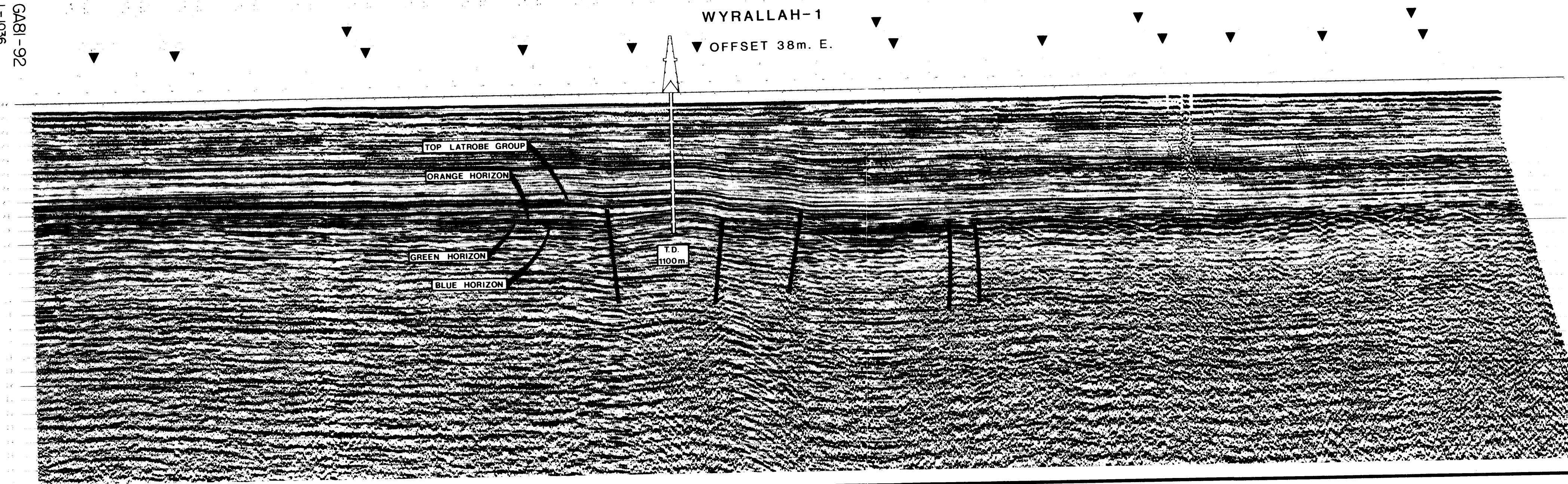
WESTERN G E O P H Y S I C A L
DIVISION OF LITTON INDUSTRIES
SINGAPORE DIGITAL CENTRE

RECORDED NOVEMBER 1981
PROCESSED JANUARY 1982
FINAL REEL NO 308870

RECORDING DATA		PROCESSING SEQUENCE PARAMETERS	
BOAT	Western Offshore Party 88 Navigation Mosman Map Location COP Position Air Guns 4500 psi 2600 psi	EDIT	Demultiplex to trace sequential Geophone amplitude 11 µV Sample rate 4 ms
SOURCE	Gun Depth 6 m S/P Interval 25 m Pop Interval 25 m Shooting Rate 40 Pops / min Pops / S/P 1	ATS	Summing 2 adjacent traces 4 ms
INSTRUMENTS	System DPS X Filter 8 Hz - 22 kHz Record Length 5 sec Sample Rate 2 ms Format Seg-B Polarity Normal	PRE-PROCESSOR	Data arranged into common depth footages
CABLE	Streamer 2400 m Groups 96 Sensors 20 per group Group Interval 25 m Lead in 245 m Cable Depth 11 m average	DBS	Geometric spreading compensation Conversion to fixed post format DBS type - least squares Minimum phase inverse filter 2 equal windows Auto corr length 192 ms File production lag 12 ms Operator length 200 ms Sample rate 4 ms
DATUM PLANE SEA LEVEL		VELOCITY ANALYSIS	Every 40 cells 2 cells/analysis N.M.O. STACK 4800% N.M.O. correction Sample rate 4 ms
CORRECTION APPLIED	GUN DEPTH + 0.04 ms CABLE DEPTH + 0.07 ms TOTAL CORR + 0.11 ms	RESIDUAL	O.C. of stacking selection Recheck if necessary
POLARITY NORMAL		T.V. FILTER	Slope 18-36 dB/Oct Time Zone L.C. H.C. 0000 15 90 1000 15 90 2000 12 80 3000 8 70 4000 8 80
COMPRESSION PULSE REPRESENTED BY NEGATIVE NUMBER (TROUGH)		GAIN	Sample rate 4 ms A.G.C. gain 600 ms window
		SUBSAMPLING	Sample rate 2 ms
		PLAYBACK	Scale - Horizontal 20 m / sec Vertical 5 cm / sec Sample rate 2 ms Geophone gain 15 dB

DWG NO: 23763

LINE GAB1-92
S.P. 1-1036



R
14/10/84