



GEOGRAM*

(Synthetic Seismogram)

Company: ESSO AUSTRALIA LTD
 Well: WHALESARK 1
 Field: WILDCAT
 Country: AUSTRALIA
 Reference No: 56821
 Date Logged: 17-08-92
 Location: 38 29 45.8' S 149 43 26.8' E
 Elevations: KB: 22.00 DF: 21.70 GL: 716.9999
 Permanent Datum: MSL
 Depth Units: METRES

LOG INFORMATION
 Engineer: S. WILKINSON
 Location: Program Version: 3.5.4
 Analyst: T. BOWMAN
 Date: 20.0
 Logging Datum: ELEVATION ABOVE MEAN SEA LEVEL
 22.00
 Seismic Reference Datum: 0.00
 Sonic Calibration By Check Shots: YES
 Some Edited By Analyst: YES
 Two-Way Time Sample Interval: 2 ms
 Environment: offshore

True Vertical Depth Corrections Applied:
 Source or True Vertical Depth Data:
 Maximum Hole Deviation:

Run	Date	Tool Type	Bit Size Depth	Casing Start Depth	Top Depth	Bottom Depth
1	17-08-92	SPT			2847 M	721 M
2	18-08-92	OHM	10.0 M BELOW HSL	15.0 M BELOW HSL		

GEOGRAM MODEL ASSUMPTIONS
 Equal time slice model of horizontal plane layers.
 Plane acoustic waves at normal incidence.
 No intrinsic attenuation.
POLARITY
 An upgoing wave, reflected by an increase in acoustic impedance with depth, is displayed as a white trough under normal polarity.
SIGNATURES
 All signatures displayed in the Geogram results correspond to a wavelet convolved with a reflection coefficient of 0.5 (a decrease in acoustic impedance with depth).

REMARKS
 FOLD HERE

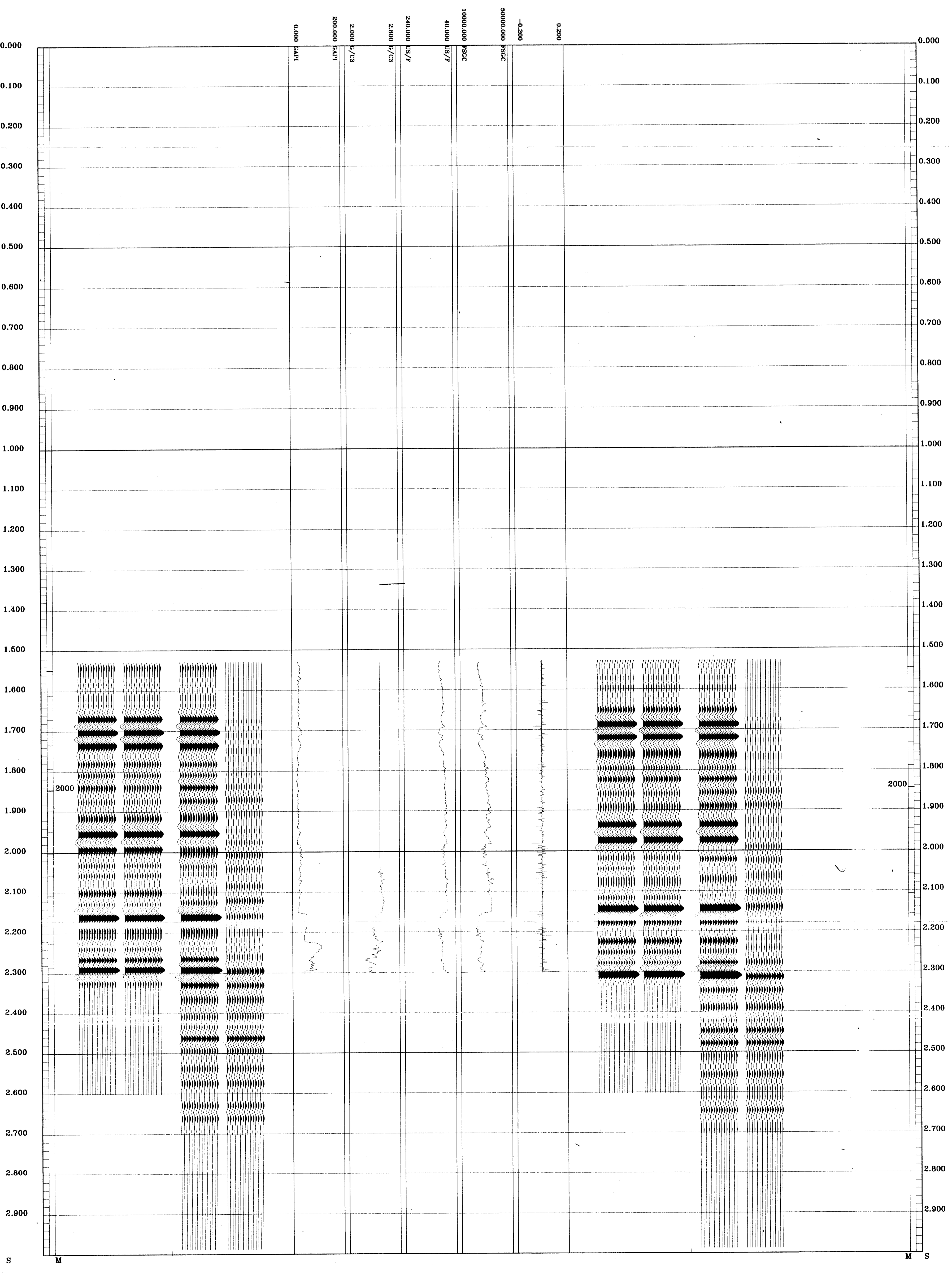
The well name, location and borehole reference data were furnished by the customer.

All interpretations are opinions based on inferences from electrical or other measurements and we cannot, and do not guarantee the accuracy or correctness of any interpretations, and we shall not be held liable or responsible for any loss, cost, damage or expense incurred or sustained by anyone resulting from any interpretations made by any of our officers, agents or employees. These interpretations are also subject to Clause 4 of our General Terms and Conditions as set out in our current Price Schedule.

CLIENT = ESSO AUSTRALIA LTD
 FIELD = WILDCAT
 WELL = WHALESARK 1

**** GEOGRAM ****
25 HERTZ ZERO PHASE
RICKER WAVELET WITH -90 DEG. PHASE SHIFT
WHALESARK-1

MULTIPLES ONLY REVERSE POLARITY
PRIMARIES AND MULTIPLES REVERSE POLARITY
PRIMARIES WITH TRANSMISSION LOSS REVERSE POLARITY
PRIMARIES REVERSE POLARITY
REFLECTION
ACOUSTIC IMPEDANCE
SONIC
DENSITY
GAMMA RAY
MULTIPLES ONLY NORMAL POLARITY
PRIMARIES AND MULTIPLES NORMAL POLARITY
PRIMARIES WITH TRANSMISSION LOSS NORMAL POLARITY
PRIMARIES NORMAL POLARITY



COMPANY ESSO AUSTRALIA LTD
 FIELD WILDCAT
 WELL WHALESARK 1
 COUNTRY AUSTRALIA

