

VERTICAL SEISMIC PROFILE

ZERO OFFSET VSP PLOT 5
WAVESHAPING & CORRIDOR STACK
(-90 DEG. phase)

Company: ESSO AUSTRALIA LTD
Well: TURRUM-5
Field: TURRUM
Country: AUSTRALIA
Reference No: SYJ-561158/561159 Interval: 2755.00 to 106.00
Date Logged: 25&12 SEP 1995 Date Processed: 26 SEP 1995
Location: 038 14' 55.083" S 148 12' 03.099" E
Elevations: KB: 25.00 DF: 27.70 GL: -60.30
Permanent Datum: MSL Depth Units: METRES
FIELD RECORDING: Engineer: R.JONSSON Location: Program Version: 700-427
COMPUTATION: Analyst: S.TCHERKASHNEV Centre: SYJ Baseline: 20.5

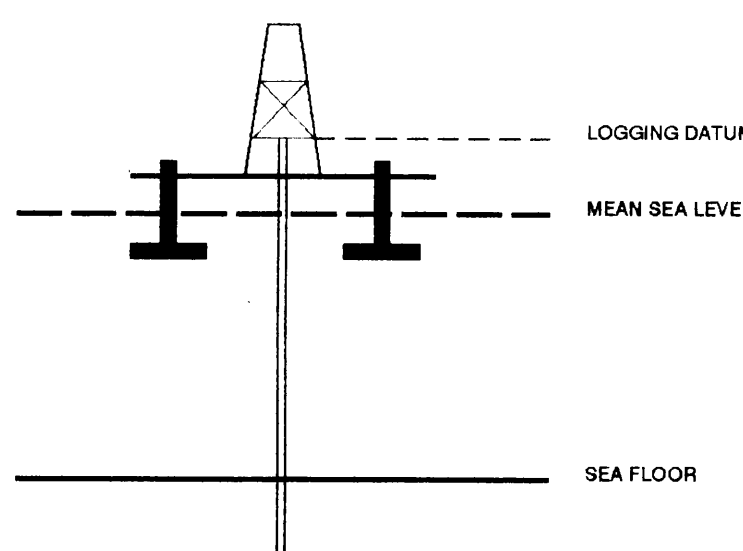


The well name, location and baseline reference data were furnished by the customer.

All interpretations are opinions based on information from electrical or other measurements, and we cannot, and do not guarantee the accuracy or correctness of any interpretation, and we shall not, except in the case of gross or willful negligence on our part, be liable or responsible for any loss, costs, damages or expenses incurred by any person in reliance on any interpretation made by any of our officers, agents or employees. These interpretations are also subject to checks of our Quality Assurance and Compliance departments for our current procedures.

ELEVATION ABOVE MEAN SEA LEVEL

Logging Datum: 25.00
Seismic Reference Datum: 0.00



Total Number of Levels: 84

Depth Reference: SRD

Time Reference: SRD

Run	Date	Tool Type	Casing Size/Depth	Top Depth	Bottom Depth
1	25-09-95	DL-LDL-GR	17.5 IN	13.3 IN	106 M
2	12-09-95	DL-LDL-GR	12.2 IN	13.3 IN	656 M

VSP Run	Date	Gun Offset	Hydro Offset	Gun Elevation	Hydro Elevation	Gun Azimuth	Hydro Azimuth
1	15-08-95	50 M	50 M	5 M BELOW MSL	10 M BELOW MSL	258 DEG	258 DEG

REMARKS

*** CORRIDOR STACK + AGC ***
AGC WINDOW : 300 MS
PHASE ROTATION APPLIED : -90 DEG.
POLARITY (S.E.G.) : REVERSE

*** CORRIDOR STACK ***
CORRIDOR WINDOW : 150 MS
PHASE ROTATION APPLIED : -90 DEG.
POLARITY (S.E.G.) : REVERSE

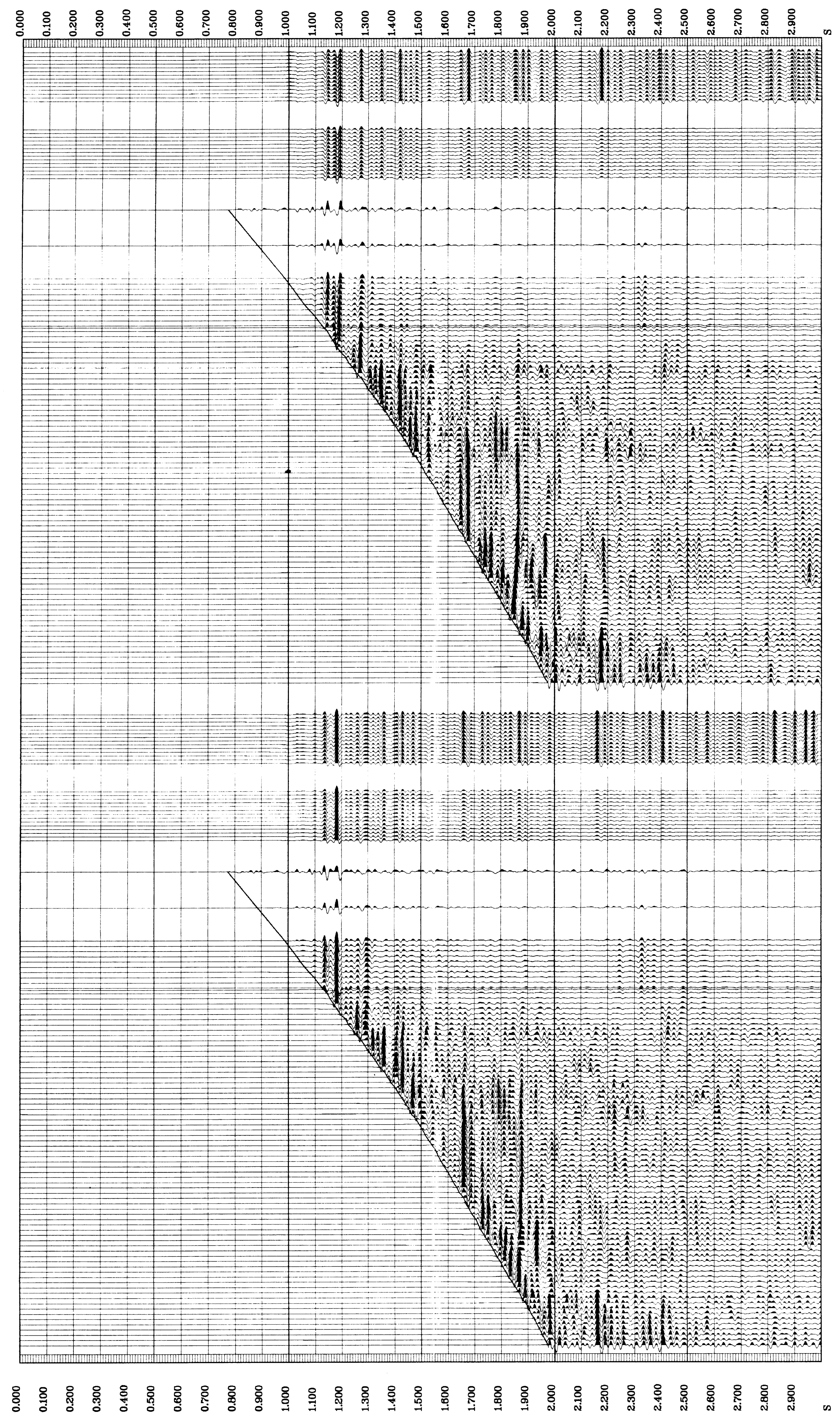
**** WAVESHAPING ****
WAVESHAPING DECONVOLUTION
ZERO PHASE
ENHANCED UPGOING WAVEFIELD
PROCESSING SEQUENCE:
MEDIAN STACK APPLIED
STATIC CORRECTION TO MSL: 6.56 MS
BAND PASS FILTER : 5-70 HZ
NORMALISATION GATE : 100 MS
TIME VARYING GAIN : (T/T0)**1.00
DOWNGOING WAVEFIELD SUBTRACTION
PHASE ROTATION APPLIED : -90 DEG.
WAVESHAPING DECONVOLUTION:
5-70 HZ ZERO PHASE WAVELET
OPERATOR LENGTH : 1.00 S
PREWHITENING : 2 %
5 LEVEL ENHANCED UPGOING WAVEFIELD
VERTICAL SCALE : 10 CM/SEC
POLARITY (S.E.G.) : REVERSE

*** CORRIDOR STACK + AGC ***
PHASE ROTATION APPLIED : -90 DEG.
AGC WINDOW : 300 MS
POLARITY (S.E.G.) : NORMAL

*** CORRIDOR STACK ***
PHASE ROTATION APPLIED : -90 DEG.
CORRIDOR WINDOW : 150 MS
POLARITY (S.E.G.) : NORMAL

**** WAVESHAPING ****
WAVESHAPING DECONVOLUTION
ZERO PHASE
ENHANCED UPGOING WAVEFIELD
PROCESSING SEQUENCE:
MEDIAN STACK APPLIED
STATIC CORRECTION TO MSL: 6.56 MS
BAND PASS FILTER : 5-70 HZ
NORMALISATION GATE : 100 MS
TIME VARYING GAIN : (T/T0)**1.00
DOWNGOING WAVEFIELD SUBTRACTION
PHASE ROTATION APPLIED : -90 DEG.
WAVESHAPING DECONVOLUTION:
5-70 HZ ZERO PHASE WAVELET
OPERATOR LENGTH : 1.00 S
PREWHITENING : 2 %
5 LEVEL ENHANCED UPGOING WAVEFIELD
VERTICAL SCALE : 10 CM/SEC
POLARITY (S.E.G.) : NORMAL

RAW DEPTH M	TRUE VERTICAL DEPTH M	TRANSIT TIME S	LEVEL NO
0.0	0.0	0.000	0
0.0	0.0	0.000	0
0.0	0.0	0.000	0
0.0	0.0	0.000	0
0.0	0.0	0.000	0
0.0	0.0	0.000	0
1965.0	1965.0	0.754	42
0.0	0.0	0.000	0
0.0	0.0	0.000	0
0.0	0.0	0.000	0
0.0	0.0	0.000	0
0.0	0.0	0.000	0
0.0	0.0	0.000	0
1965.0	1965.0	0.754	42
938.0	913.0	0.387	83
1075.0	1060.0	0.443	82
1200.0	1175.0	0.488	81
1210.0	1185.0	0.492	80
1220.0	1195.0	0.496	79
1230.0	1205.0	0.500	78
1240.0	1215.0	0.504	77
1250.0	1225.0	0.508	76
1260.0	1235.0	0.512	75
1270.0	1245.0	0.516	74
1280.0	1255.0	0.520	73
1290.0	1265.0	0.524	72
1300.0	1275.0	0.528	71
1310.0	1285.0	0.532	70
1320.0	1295.0	0.536	69
1330.0	1305.0	0.540	68
1340.0	1315.0	0.544	67
1350.0	1325.0	0.548	66
1360.0	1335.0	0.552	65
1370.0	1345.0	0.556	64
1380.0	1355.0	0.560	63
1390.0	1365.0	0.564	62
1400.0	1375.0	0.568	61
1410.0	1385.0	0.572	60
1420.0	1395.0	0.576	59
1430.0	1405.0	0.580	58
1440.0	1415.0	0.584	57
1450.0	1425.0	0.588	56
1460.0	1435.0	0.592	55
1470.0	1445.0	0.596	54
1480.0	1455.0	0.600	53
1490.0	1465.0	0.604	52
1500.0	1475.0	0.608	51
1510.0	1485.0	0.612	50
1520.0	1495.0	0.616	49
1530.0	1505.0	0.620	48
1540.0	1515.0	0.624	47
1550.0	1525.0	0.628	46
1560.0	1535.0	0.632	45
1570.0	1545.0	0.636	44
1580.0	1555.0	0.640	43
1590.0	1565.0	0.644	42
1600.0	1575.0	0.648	41
1610.0	1585.0	0.652	40
1620.0	1595.0	0.656	39
1630.0	1605.0	0.660	38
1640.0	1615.0	0.664	37
1650.0	1625.0	0.668	36
1660.0	1635.0	0.672	35
1670.0	1645.0	0.676	34
1680.0	1655.0	0.680	33
1690.0	1665.0	0.684	32
1700.0	1675.0	0.688	31
1710.0	1685.0	0.692	30
1720.0	1695.0	0.696	29
1730.0	1705.0	0.700	28
1740.0	1715.0	0.704	27
1750.0	1725.0	0.708	26
1760.0	1735.0	0.712	25
1770.0	1745.0	0.716	24
1780.0	1755.0	0.720	23
1790.0	1765.0	0.724	22
1800.0	1775.0	0.728	21
1810.0	1785.0	0.732	20
1820.0	1795.0	0.736	19
1830.0	1805.0	0.740	18
1840.0	1815.0	0.744	17
1850.0	1825.0	0.748	16
1860.0	1835.0	0.752	15
1870.0	1845.0	0.756	14
1880.0	1855.0	0.760	13
1890.0	1865.0	0.764	12
1900.0	1875.0	0.768	11
1910.0	1885.0	0.772	10
1920.0	1895.0	0.776	9
1930.0	1905.0	0.780	8
1940.0	1915.0	0.784	7
1950.0	1925.0	0.788	6
1960.0	1935.0	0.792	5
1970.0	1945.0	0.796	4
1980.0	1955.0	0.800	3
1990.0	1965.0	0.804	2
2000.0	1975.0	0.808	1
2010.0	1985.0	0.812	0
2020.0	1995.0	0.816	0
2030.0	2005.0	0.820	0
2040.0	2015.0	0.824	0
2050.0	2025.0	0.828	0
2060.0	2035.0	0.832	0
2070.0	2045.0	0.836	0
2080.0	2055.0	0.840	0
2090.0	2065.0	0.844	0
2100.0	2075.0	0.848	0
2110.0	2085.0	0.852	0
2120.0	2095.0	0.856	0
2130.0	2105.0	0.860	0
2140.0	2115.0	0.864	0
2150.0	2125.0	0.868	0
2160.0	2135.0	0.872	0
2170.0	2145.0	0.876	0
2180.0	2155.0	0.880	0
2190.0	2165.0	0.884	0
2200.0	2175.0	0.888	0
2210.0	2185.0	0.892	0
2220.0	2195.0	0.896	0
2230.0	2205.0	0.900	0
2240.0	2215.0	0.904	0
2250.0	2225.0	0.908	0
2260.0	2235.0	0.912	0
2270.0	2245.0	0.916	0
2280.0	2255.0	0.920	0
2290.0	2265.0	0.924	0
2300.0	2275.0	0.928	0
2310.0	2285.0	0.932	0
2320.0	2295.0	0.936	0
2330.0	2305.0	0.940	0
2340.0	2315.0	0.944	0
2350.0	2325.0	0.948	0
2360.0	2335.0	0.952	0
2370.0	2345.0	0.956	0
2380.0	2355.0	0.960	0
2390.0	2365.0	0.964	0
2400.0	2375.0	0.968	0



COMPANY ESSO AUSTRALIA LTD
FIELD TURRUM
WELL TURRUM-5
COUNTRY AUSTRALIA

