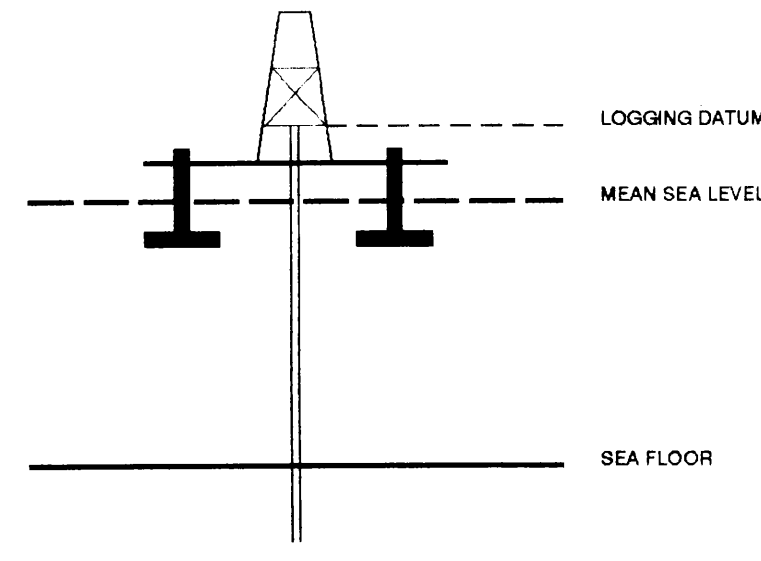


# SEISMIC CALIBRATION LOG

(Adjusted Continuous Velocity Log)

Company: ESSO AUSTRALIA LTD  
 Well: TURRUM-5  
 Field: TURRUM  
 Country: AUSTRALIA  
 Reference No: SYJ-561158/561159 Interval: 2755.00 to 106.00  
 Date Logged: 25&12 SEP 1995 Date Processed: 26 SEP 1995  
 Location: 038 14' 55.083" S 148 12' 03.099" E  
 Elevations: KB: 25.00 DF: 27.70 GL: -60.30  
 Permanent Datum: MSL Depth Units: METRES  
 FIELD RECORDING: Engineer: RJONSSON Location: Program Version: 700-427  
 COMPUTATION: Analyst: S.TOCHERKASHNEV Centre: SYJ Baseline: 20.5  
 ELEVATION ABOVE MEAN SEA LEVEL  
 Logging Datum: 25.00  
 Seismic Reference Datum: 0.00



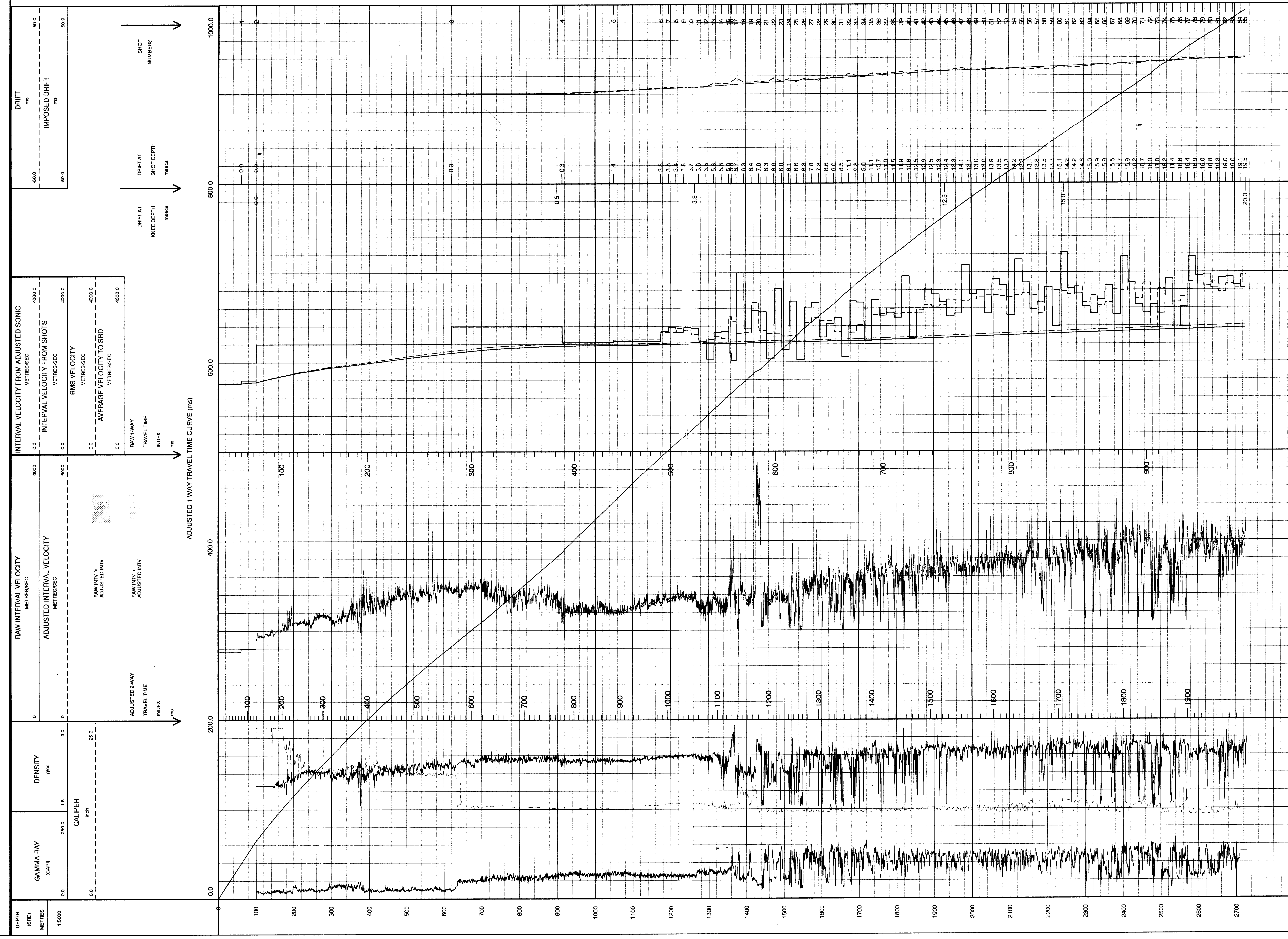
Total Number of Levels: 84  
 Depth Reference: SRD  
 Time Reference: SRD

Run	Date	Tool Type	Bit Size Depth	Casing Size Depth	Top Depth	Bottom Depth
1	25-08-95	DLL-LDL-GR	17.8 IN	13.3 IN	106 M	658 M
2	12-09-95	DLL-LDL-GR	12.2 IN	13.3 IN	656 M	2755 M

VSP Run	Date	Gun Offset	Hydro Offset	Gun Elevation	Hydro Elevation	Gun Azimuth	Hydro Azimuth
1	15-08-95	50 M	50 M	5 M BELOW MSL	10 M BELOW MSL	258 DEG	258 DEG

All interpretations are opinions based on information from electronic or other measurements and are correct, and do not guarantee the accuracy or correctness of any interpretations, and we shall not, except in the case of gross or willful negligence on our part, be liable or responsible for any loss, costs, damages or expense incurred by or for any third party in reliance on the information provided hereunder. These interpretations are also subject to the terms and conditions set out in our current Service Schedule.

FOLD HERE



COMPANY: ESSO AUSTRALIA LTD  
 FIELD: TURRUM  
 WELL: TURRUM-5  
 COUNTRY: AUSTRALIA

