

Esso Australia Ltd. - Turrum 5 - T2 @ 8s TR

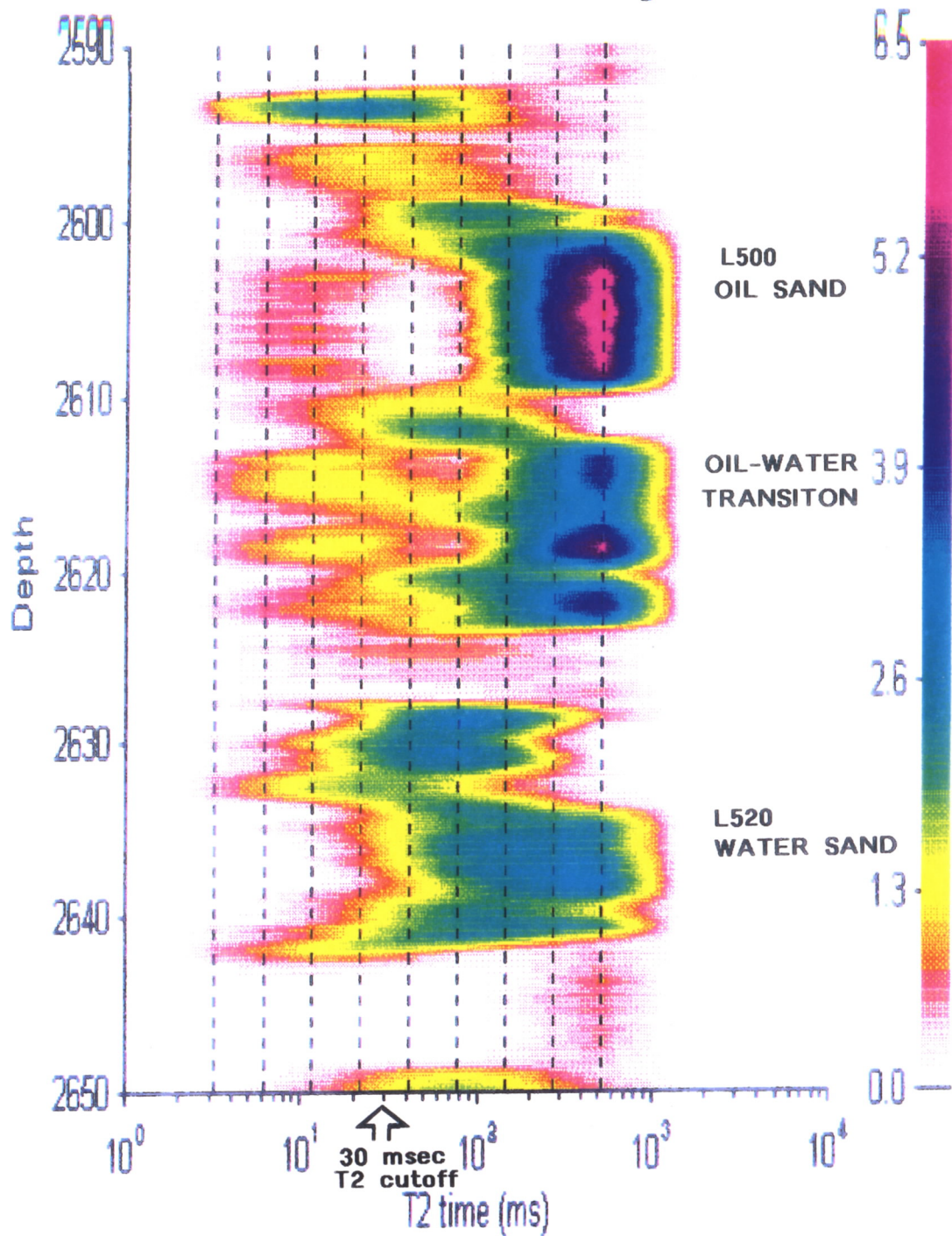


Figure 2 Turrum 5 MRIL T2 distribution shows strong oil peak at 500 msec in the L-500 reservoir above 2623 metres which overlies the L-520 water bearing reservoir. An oil-water transition zone occurs from 2612 to 2623 metres indicated by T2 amplitude less than the oil signal (< 100 msec). This is in contrast to the overlying oil reservoir from 2602.5 to 2610 metres.

