

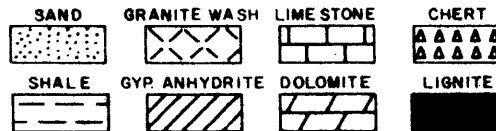


WELL  
COMPANY  
COUNTY  
STATE

TURRUM NO.2  
ESSO  
GIPPSLAND BASIN  
VICTORIA

LEGEND

DEPTH CORRESPONDS TO DRILL  
PIPE MEASUREMENTS.  
NB NEW BIT  
NCB NEW CORE BIT  
DST DRILL STEM TEST  
NR NO RETURNS  
TG TRIP GAS  
CO CIRCULATE OUT RETURNS



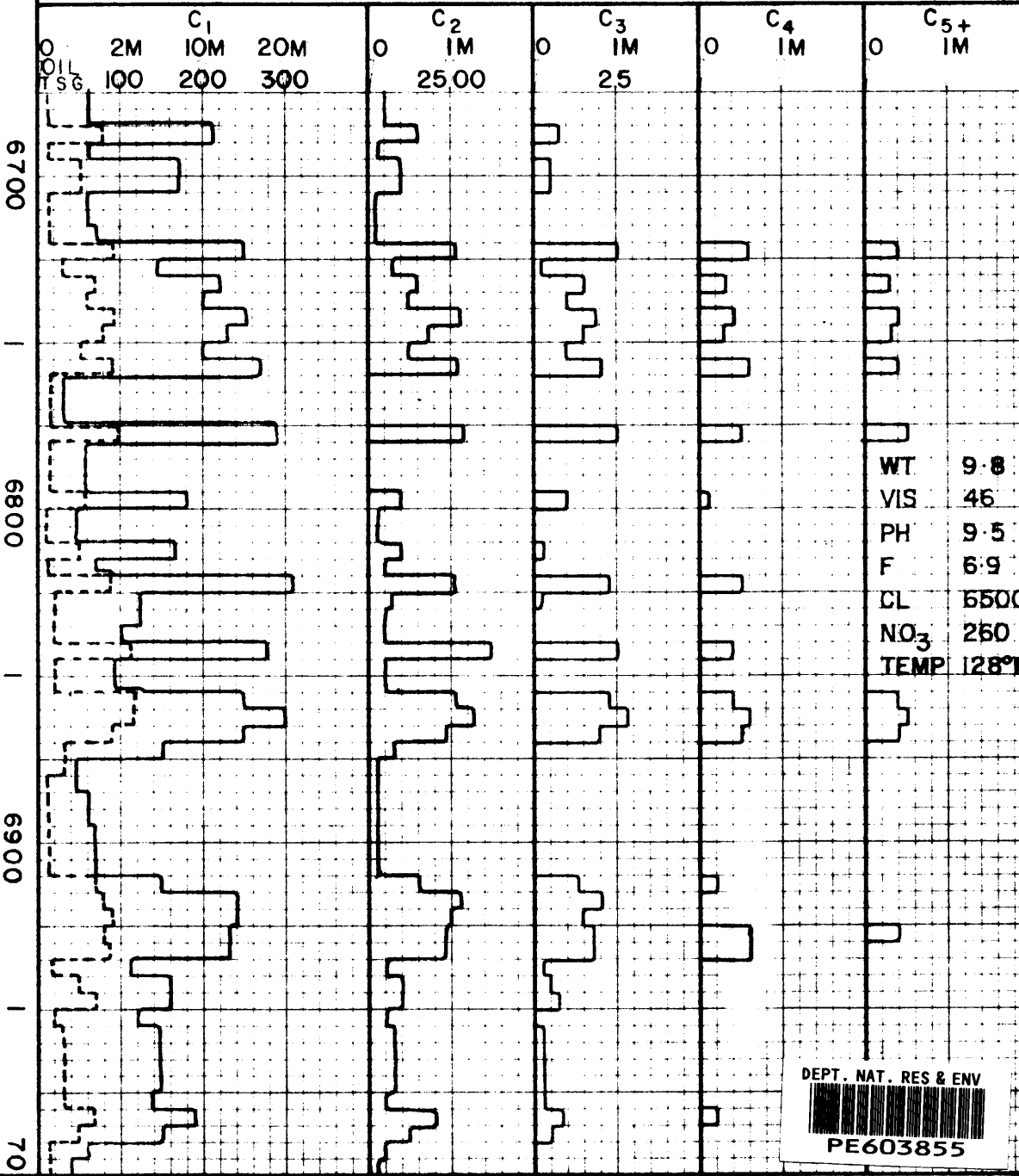
21727  
CUTTINGS ANALYSIS

TOTAL GAS \_\_\_\_\_  
METHANE \_\_\_\_\_  
LIQUID HYDROCARBONS  
(C<sub>6+</sub>) \_\_\_\_\_ 6+ \_\_\_\_\_

DRILLING RATE  
 FT PER HR    MIN PER FT  
 75   50   25  
 dc--1:0   1:5   2:0  
 VISUAL POROSITY  
 GST

LITHOLOGY

ppm HYDROCARBONS IN MUD M=1000



OIL TSG

SILTST: MED. BRN.,  
FIRM, ARGILL.

SANDST: LT. GY., - LT.  
BRN., V. FINE - MED.,  
HARD

WT 9.8  
VIS 46  
PH 9.5  
F 6.9  
CL 6500  
NO<sub>3</sub> 250  
TEMP 128°F

SILTST: DK BRN., FIRM,  
ARGILL.

SHALE: LT-DK BRN.,  
SILTY, CARB., FIRM.

SANDST: WH., FINE -  
MED., SA-SR, CONS.

SANDST: LT GY-LT BRN,  
V. FINE, SA-SR, DOLO.

29-6-74

DEPT. NAT. RES & ENV  
  
 PE603855