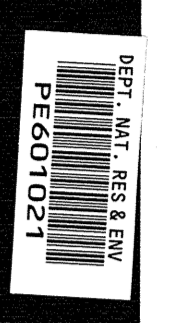


02 OCT 1989
Schlumberger
SYDNEY LOG INTERPRETATION CENTRE



GEOGRAM*

(Synthetic Seismogram)

Company: ESSO AUSTRALIA LTD
Well: TORSK #1
Field: WILDCAT
Country: AUSTRALIA
Reference No: 569262
Date Logged: 15 NOV 88
Location: 038 26' 49.12" S 147 29' 50.04" E
Elevations: KB: 2100 DF: 2070 GL: -4300
Permanent Datum: MSL
Depth Units: METRES

LOG INFORMATION

FIELD RECORDING: Engineer: ZHANG Location: Program Version: 28.4
COMPUTATION: Analyst: M. SANDERS Centre: SVU Baseline: 16.900XZ
ELEVATION ABOVE MEAN SEA LEVEL
Logging Datum: 2100
Seismic Reference Datum: 000
Sonic Calibration By Check Shots: YES Sonic Edited By Analyst: YES
Two-Way Time Sample Interval: 2 ms Environment: onshore

True Vertical Depth Corrections Applied:
Source of True Vertical Depth Data:
Maximum Hole Deviation:

Run	Date	Tool Type	Bit Size/Depth	Casing Size/Depth	Top Depth	Bottom Depth
1	13 NOV 88	BHC				

VSP Run	Date	Gun Offset	Hydro Offset	Gun Elevation	Hydro Elevation	Gun Azimuth	Hydro Azimuth
1	15 NOV 88	40 M	40 M	91 M BELOW MSL	122 M BELOW MSL		

GEOGRAM MODEL ASSUMPTIONS

Equal time slice model of horizontal plane layers.
Plane acoustic waves at normal incidence.
No intrinsic attenuation.

POLARITY

An upgoing wave, reflected by an increase in acoustic impedance with depth, is displayed as a white trough under normal polarity.

SIGNATURES

All signatures displayed in the Geogram results correspond to a wavelet convolved with a reflection coefficient of -0.5 (A decrease in acoustic impedance with depth).

REMARKS

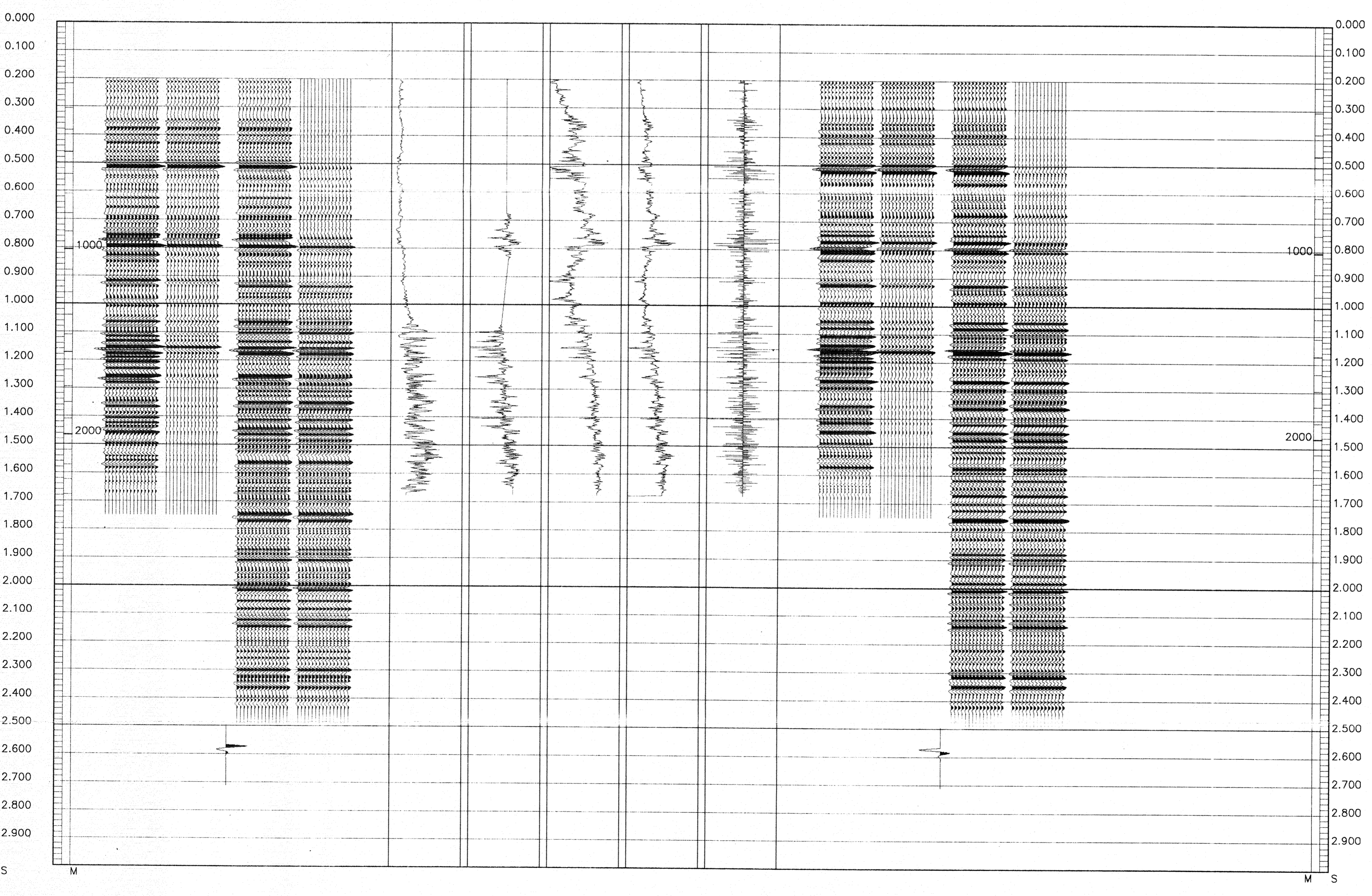
40 HZ MINIMUM PHASE

The well name, location and borehole reference data were furnished by the customer.

All interpretations are opinions based on inferences from electrical or other measurements and we cannot, and do not guarantee the accuracy or correctness of any interpretations, and we shall not, except in the case of gross or willful negligence on our part, be liable or responsible for any loss, costs, damages or expenses incurred or sustained by anyone resulting from any interpretations made by any of our officers, agents or employees. These interpretations are also subject to Clause 4 of our General Terms and Conditions as set out in our current Price Schedule.

** GEOGRAM **
40 HERTZ MINIMUM PHASE
RICKER WAVELET
TORSK - 1

MULTIPLES ONLY REVERSE POLARITY	10000.000 FS5C
PRIMARIES AND MULTIPLES REVERSE POLARITY	50000.000 FS5C
PRIMARIES WITH TRANSMISSION LOSS REVERSE POLARITY	0.200
REFLECTION	-0.200
ACOUSTIC IMPEDANCE	50000.000 FS5C
SONIC	10000.000 FS5C
DENSITY	150.000 US/F
GAMMA RAY	2.800 G/C3
MULTIPLES ONLY NORMAL POLARITY	1.800 G/C3
PRIMARIES AND MULTIPLES NORMAL POLARITY	200.000 GdP
PRIMARIES WITH TRANSMISSION LOSS NORMAL POLARITY	0.000 GdP
PRIMARIES NORMAL POLARITY	



COMPANY ESSO AUSTRALIA LTD
FIELD WILDCAT
WELL TORSK #1
COUNTRY AUSTRALIA

