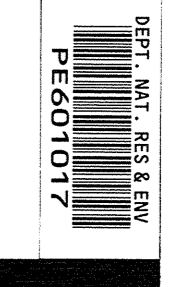
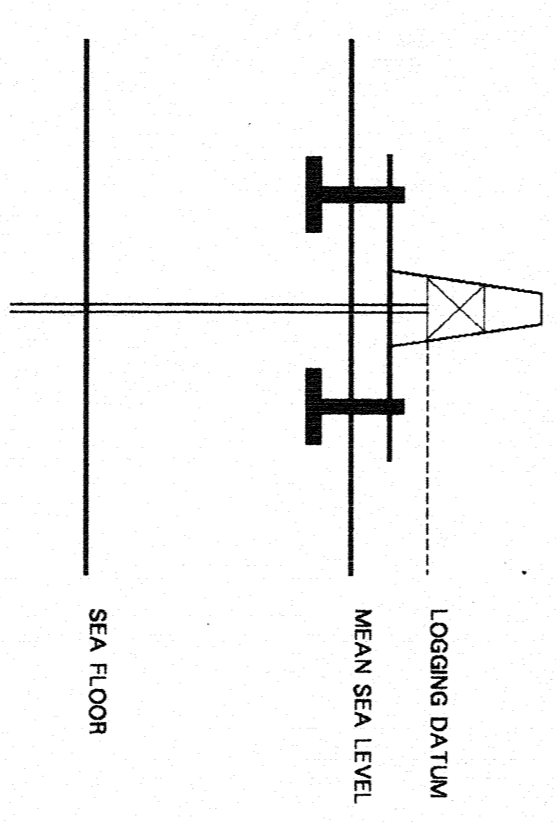


# SEISMIC CALIBRATION LOG

(Adjusted Continuous Velocity Log)



Company: ESSO AUSTRALIA LTD  
Well: TORSK #1  
Field: WILDCAT  
Country: AUSTRALIA  
Reference No: 569262  
Date Logged: 16 NOV 88  
Location: 038 26' 49.12" S 147 29' 50.04" E  
Elevations: KB: 2100 DF: 2070 GL: -4300  
Permanent Datum: MSL  
Interval: 242200 to 200000  
Date Processed: 10 DEC 88  
Interval: 242200 to 200000  
Elevation Above Mean Sea Level: 2100  
Logging Datum: 2100  
Seismic Reference Datum: 000



Total Number of Levels: SRD

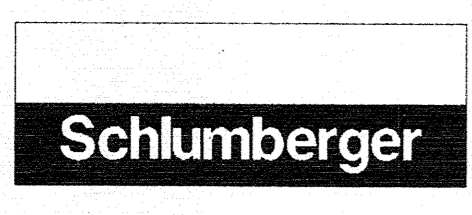
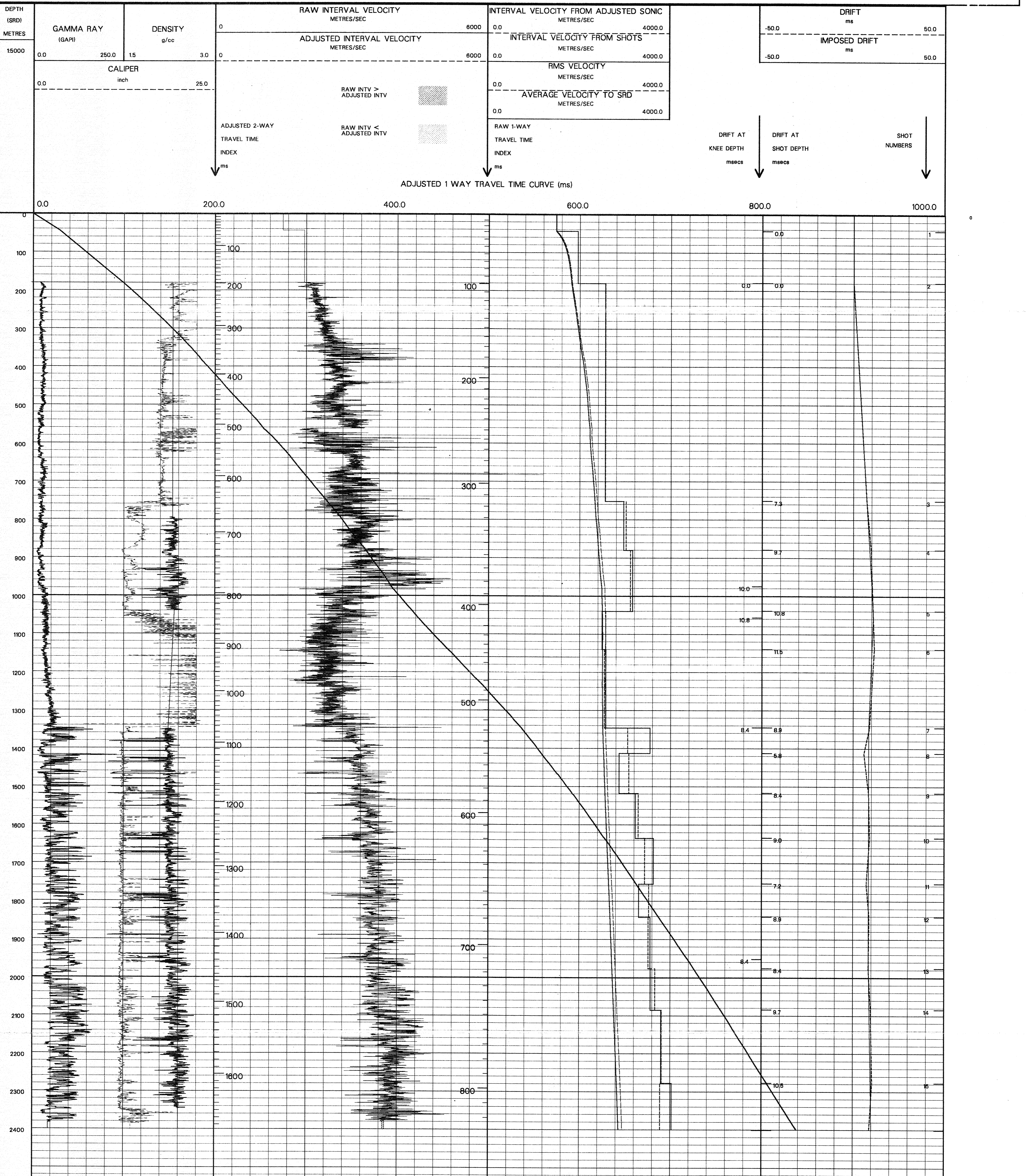
Run	Date	Tool Type	SRD	SRD	SRD	SRD	SRD
1	13 NOV 88	BHC					

Run	Date	Gun Offset	Hydro Offset	Gun Elevation	Hydro Elevation	Gun Azimuth	Hydro Azimuth
1	15 NOV 88	40 M	40 M	91 M BELOW MSL	122 M BELOW MSL		

REMARKS

The well name, location and borehole reference data were furnished by the customer.

All interpretations are opinions based on inferences from electrical or other measurements and we cannot, and do not guarantee the accuracy or correctness of any interpretations, and we shall not, except in the case of gross or willful negligence on our part, be liable or responsible for any loss, costs, damages or expenses incurred or sustained by anyone resulting from any interpretations made by any of our officers, agents or employees. These interpretations are also subject to Clause 4 of our General Terms and Conditions as set out in our current Price Schedule.



COMPANY ESSO AUSTRALIA LTD  
FIELD WILDCAT  
WELL TORSK #1  
COUNTRY AUSTRALIA