

from Well Completion Report
Vol 2

Schlumberger

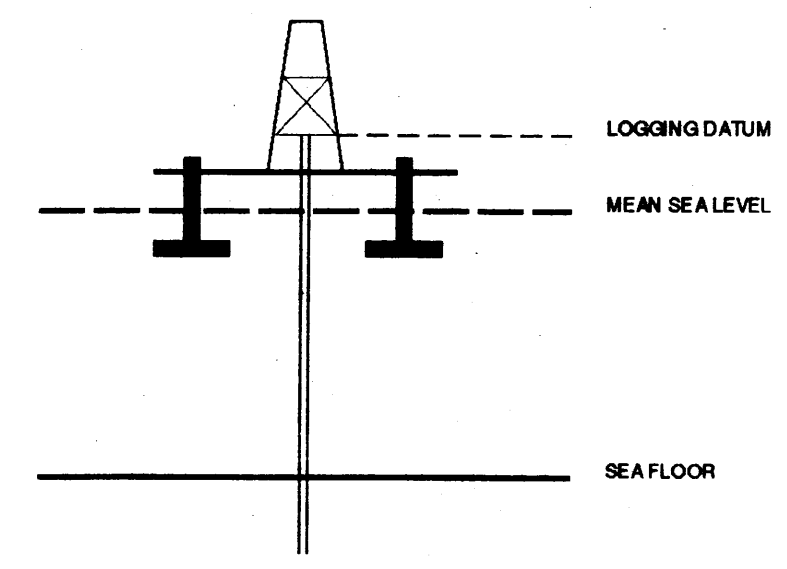
SYDNEY LOG
INTERPRETATION
CENTRE

SEISMIC CALIBRATION LOG



(Adjusted Continuous Velocity Log)

Company: BHP PETROLEUM
Well: TOMMYRUFF #1
Field: WILDCAT
Country: AUSTRALIA
Reference No: 56594 Interval: 1545.00 to 200.00
Date Logged: 29/5/90 Date Processed: 29/5/90
Location: 38 36'47.4" SS 147 08'33.7" EE
Elevations: KB: 21.00 DF: 20.70 GL: -33.00
Permanent Datum: MSL Depth Units: METRES
FIELD RECORDING: Engineer: R CRIST Location: Program Version: 32.2
COMPUTATION: Analyst: Z.KATELIŞ Centre: SYJ Baseline: 18.2
ELEVATION ABOVE MEAN SEA LEVEL
Logging Datum: 21.00
Seismic Reference Datum: 0.00



Total Number of Levels: 27
Depth Reference: SRD
Time Reference: SRD

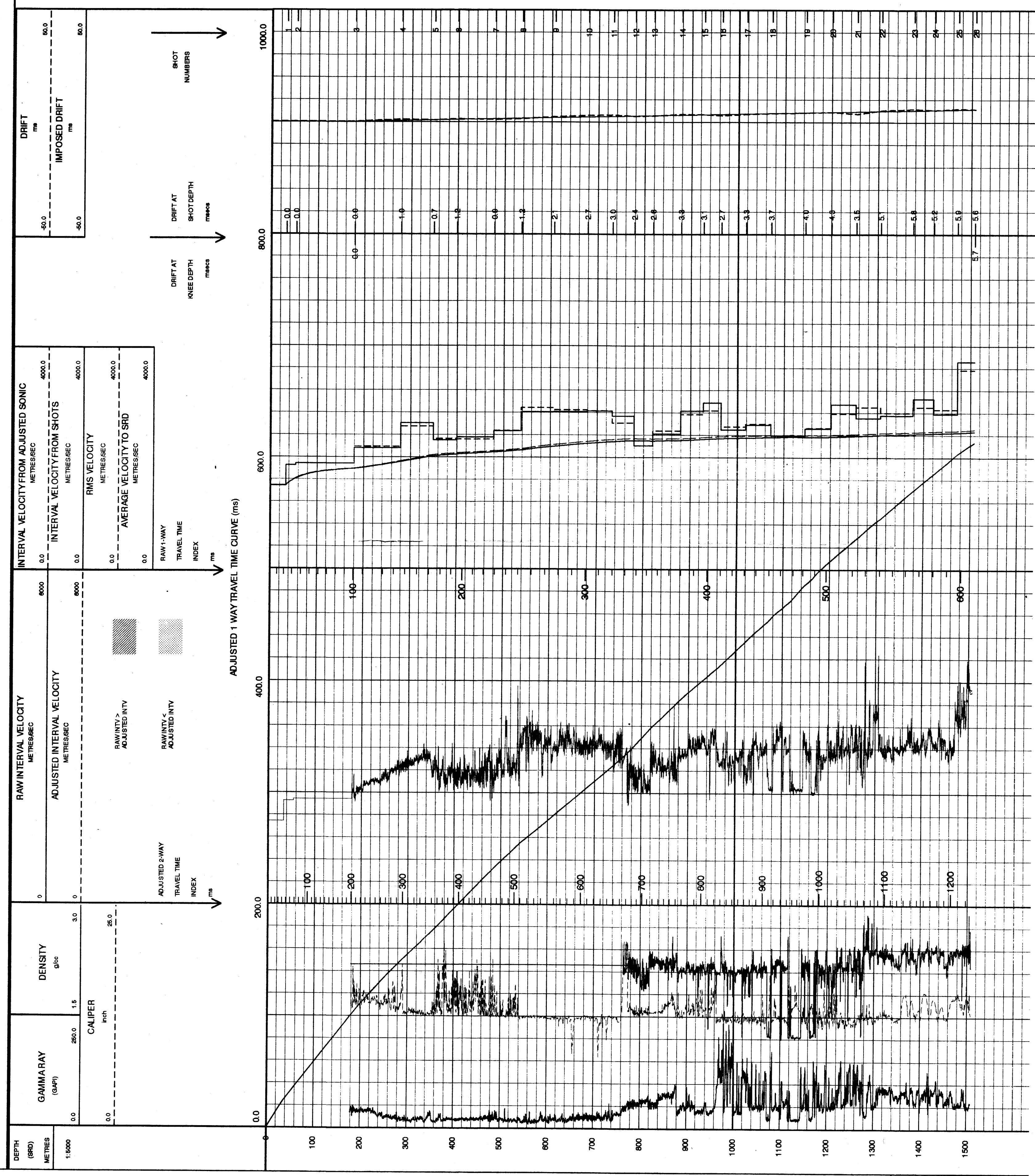
Run	Date	Tool Type	Bit Size/Depth	Casing Size/Depth	Top Depth	Bottom Depth
1&2	22/5/90				200.0	1545.0

VSP Run	Date	Gun Offset	Hydro Offset	Gun Elevation	Hydro Elevation	Gun Azimuth	Hydro Azimuth
1	28-5-90	40.0 M	40.0 M	4 BELOW MSL	9 M BELOW MSL	0	0

REMARKS

The well name, location and borehole reference data were furnished by the customer.

All interpretations are opinions based on information from electrical or other measurements and we cannot and do not guarantee the accuracy or correctness of any interpretations, and we shall not, except in the case of gross or willful negligence on our part, be liable or responsible for any loss, costs, damages or expenses incurred or sustained by anyone resulting from any interpretations made by any of our officers or employees. These interpretations are subject to Clause 4 of our General Terms and Conditions as set out in our current Price Schedule.



COMPANY: BHP PETROLEUM
FIELD: WILDCAT
WELL: TOMMYRUFF #1
COUNTRY: AUSTRALIA

