



DEPT. NAT. RES & ENV
PE906399

AUSTRALIA - SOUTH COAST

MAP TO GABO ISLAND INCLUDING TASMANIA

DEPTHS IN FATHOMS

Scale 1:1,000,000 at lat. 27° 15' S

Depths in fathoms (under eleven in fathoms and feet)
are related to Indian Spring Low Water
and are expressed in feet above Mean Higher High Water
of the Australian tide gauge. Positions are related to the Australian
datum.

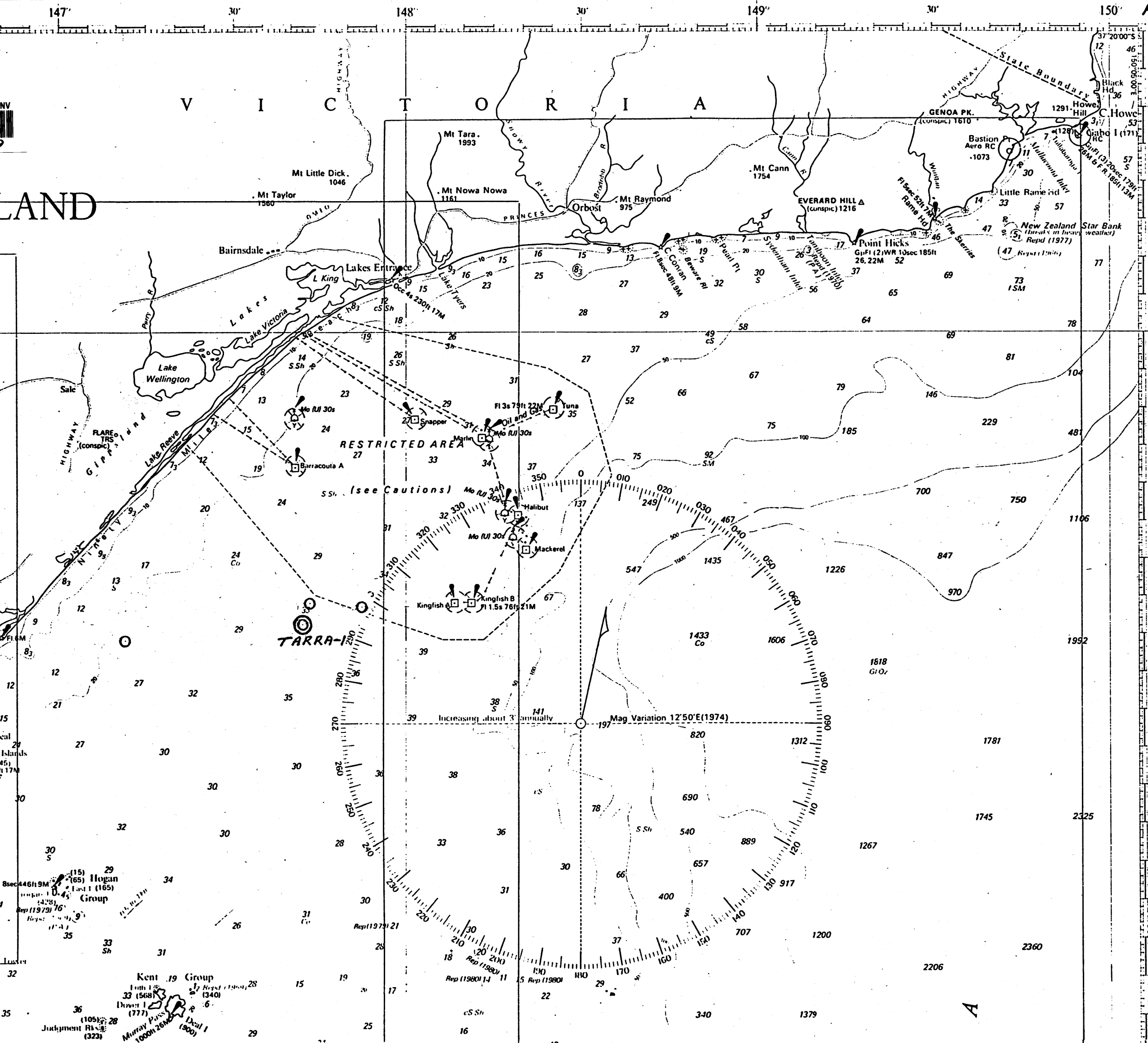
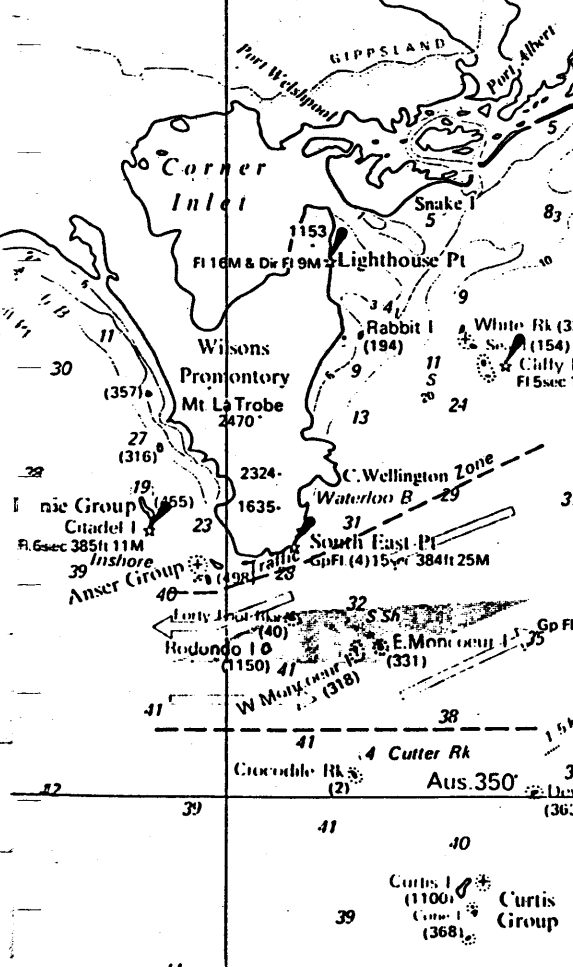
Surveys to 1970. Admiralty surveys, seismic
and passage soundings to 1970.

WELLHEADS

Temporarily abandoned wells may have
wellhead gear projecting up to about 26 feet (8
metres) from the sea bed.
Submerged production wells are marked by
light-buoys.

CAUTION - OMISSIONS in the areas covered
by larger scale charts these must be consulted
for buoys, lights, beacons and wrecks as on this
chart only the principal aids to navigation are
shown.

Beech Hill
1877



37° 20' 00" S
30°
38°
30°
39°
30°

147° 30' 148° 30' 149° 30' 150°

Adjoining Chart Aus. 423