

PLATE 1: 2274 m

Reflected Light

This plate shows two distinct bitumens (very dark brown and light brown, occurring slightly above and to the right of the centre of the field) occurring with inertinite in shale.

Field Dimensions 0.26 mm x 0.18 mm

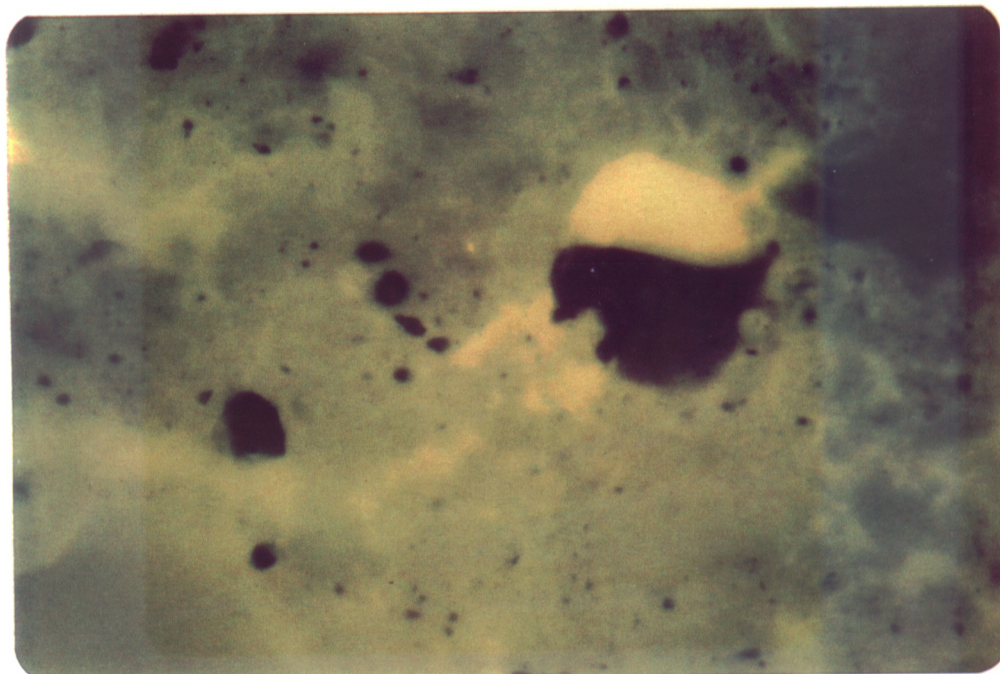


PLATE 2: 2274 m

Fluorescence Mode

The same field as Plate 1 illustrating the markedly differing fluorescence characteristics of the two bitumens (dull orange and bright yellow).

DEPT. NAT. RES & ENV

PE906389