

OIL and GAS DIVISION

16 AUG 1985 W.C.R.

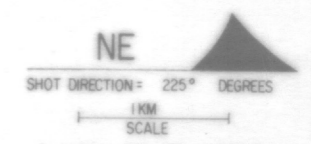
ENCLOSURE 2

FINAL STACK

LINE: GA81-51
S.P. 1 to S.P. 1674

AIR GUN

LEGEND
 W = INTERSECTION
 V = VELOCITY ANALYSIS
 WATER DEPTH IN METRES



DEPT. NAT. RES & ENV

 PE902466

4800% TIME SECTION (STK, TVF, AGC)

AUSTRALIAN AQUITAINE PETROLEUM
GAB1 SEISMIC SURVEY

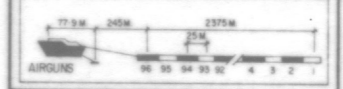
AREA: VIC / PI7

WESTERN
 GEOPHYSICAL
 DIVISION OF LITTON INDUSTRIES
 SINGAPORE DIGITAL CENTRE

RECORDED NOVEMBER 1981
 PROCESSED JANUARY 1982
 FINAL REEL NO. 315415

RECORDING DATA	
BOAT	Western Odyssey Party 86
	Navigation Maxtron
	Map Locations CDP Position
SOURCE	Air Guns 4500psi 560 cu ins.
	Gun Depth 6 m
	S.P. Interval 25 m
	Pop Interval 25 m
	Shooting Rate 40 Pops/km
	Pops / S.P. 1
INSTRUMENTS	System OFS II
	Filter 8 Hz - 128 Hz
	Record Length 5 sec
	Sample Rate 2 ms
	Format Seq-B
	Polarity Normal
CABLE	Streamer 2400 m
	Groups 96
	Satelmeters 20 per group
	Group Interval 25 m
	Lead In 245 m
	Cable Depth 11 m. average

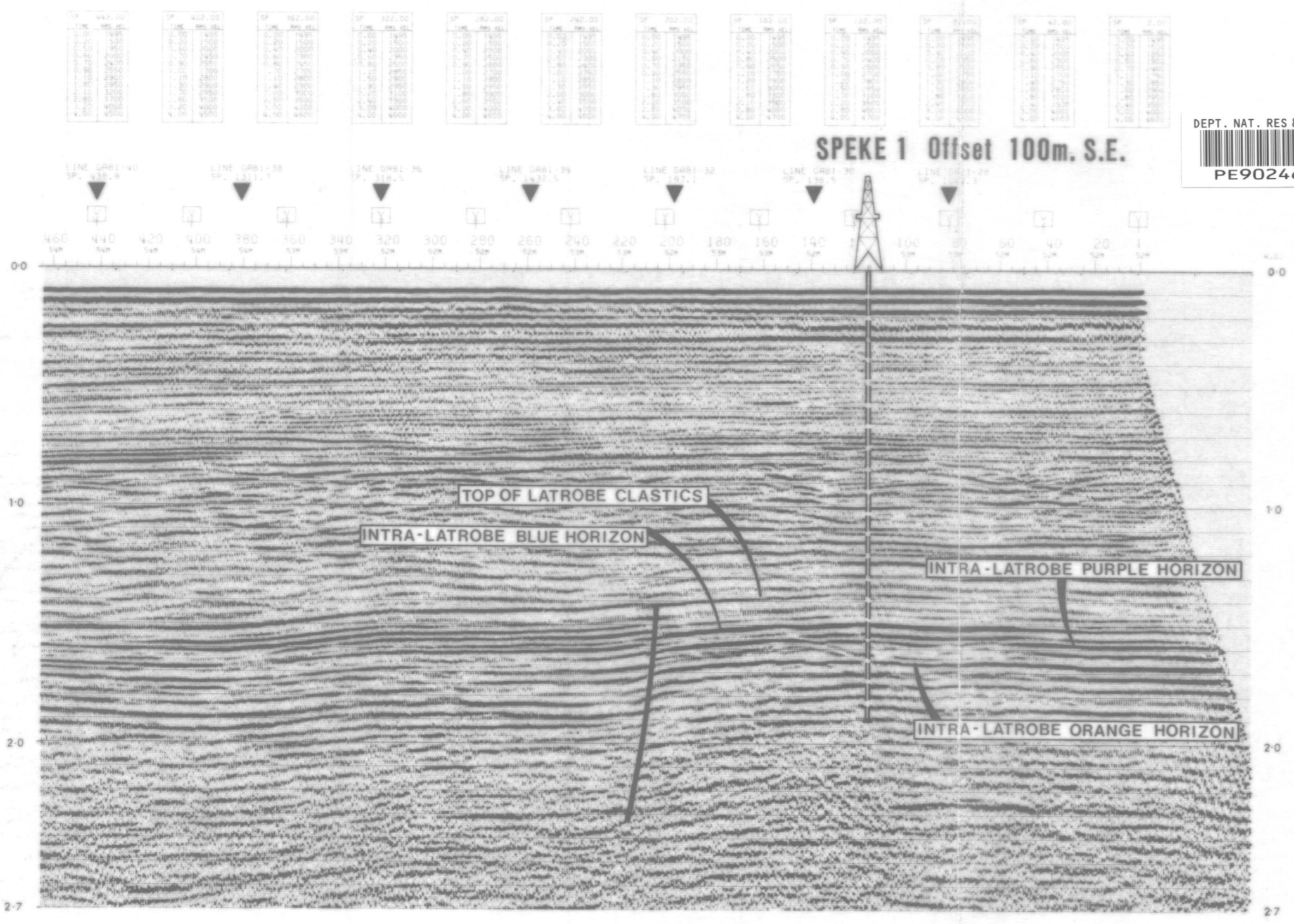
PROCESSING SEQUENCE PARAMETERS	
EDIT	Demultiplex to trace sequential, Geophone amplitude ft. pt. Sample rate 4 ms
ATS	Summing 2 adjacent traces 4 ms
PRE-PROCESSOR	Data arranged into common depth families
D.B.S.	Geometric spreading compensation Conversion to fixed point format D.B.S. type - least squares Minimum phase inverse filter 2 equal windows Auto corr length 192 ms Min prediction lag 12 ms Operator length 200 ms Sample rate 4 ms
VELOCITY ANALYSIS	Every 40 cdfs 2 cdfs/analysis
N.M.O. - STACK	4800% N.M.O. correction Sample rate 4 ms
RESIDUAL	Q.C. of stacking velocities Restack if necessary
T.V. FILTER	Slope 18-36 dB/Oct Time Zone L.C. H.C. 0000 15 90 1000 15 90 2000 15 90 3000 8 70 4000 8 60
GAIN	Sample rate 4 ms A.G.C. gain 600 ms window
SUBSAMPLING	Sample rate 2 ms
PLAYBACK	Scale - Horizontal 20 ft/cm Vertical 5 cm/sec Sample rate 2 ms Geophone gain 13 dB



DATUM PLANE SEA LEVEL	
CORRECTION	APPLIED
GUN DEPTH	+ 004 ms.
CABLE DEPTH	+ 007 ms.
TOTAL CORR	+ 011 ms.

POLARITY NORMAL
 COMPRESSION PULSE REPRESENTED
 BY NEGATIVE NUMBER (TROUGH)

SPEKE 1 Offset 100m. S.E.



R