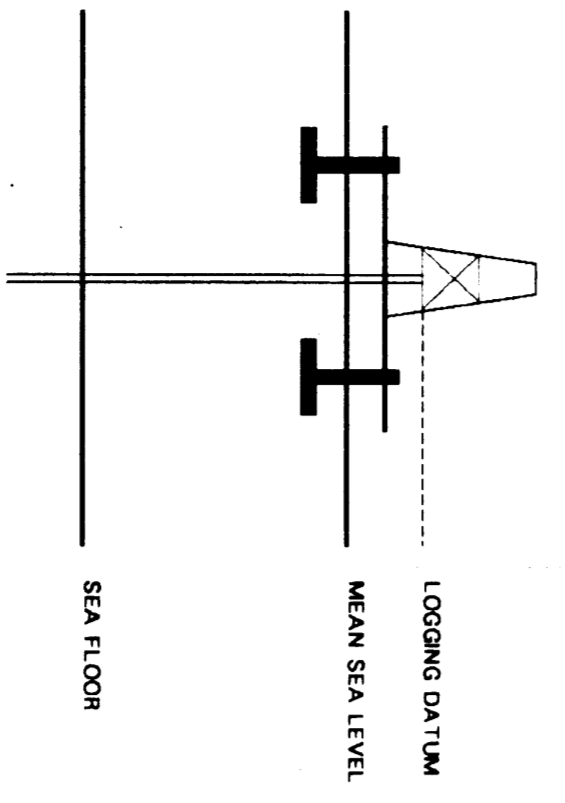




SEISMIC CALIBRATION LOG

(Adjusted Continuous Velocity Log)

Company:	ESSO AUSTRALIA LTD
Well:	SNAPPER - 6
Field:	WILDCAT
Country:	AUSTRALIA
Reference No:	580101
Interval:	000 to 3003.00
Date Logged:	14/01/86
Date Processed:	22/01/86
Location:	038 13' 55.87" S 148 00' 41.89" E
Fluviation:	KB 210 M
DF:	20.7 M
GL:	-55.0 M
Permittion Datum:	MSL
Depth Units:	METRES
FIELD RECORDING ENGINEER:	S.P. RAMAIAH
LOCATION:	VCA Program Version: 282A
COMPUTATION ANALYST:	M. SANDERS
COURSE:	SVJ Baseline
VERSION:	1.2
Logging Datum:	207 M
Sea Level Reference Datum:	MSL
Sea Floor:	-55.0 M

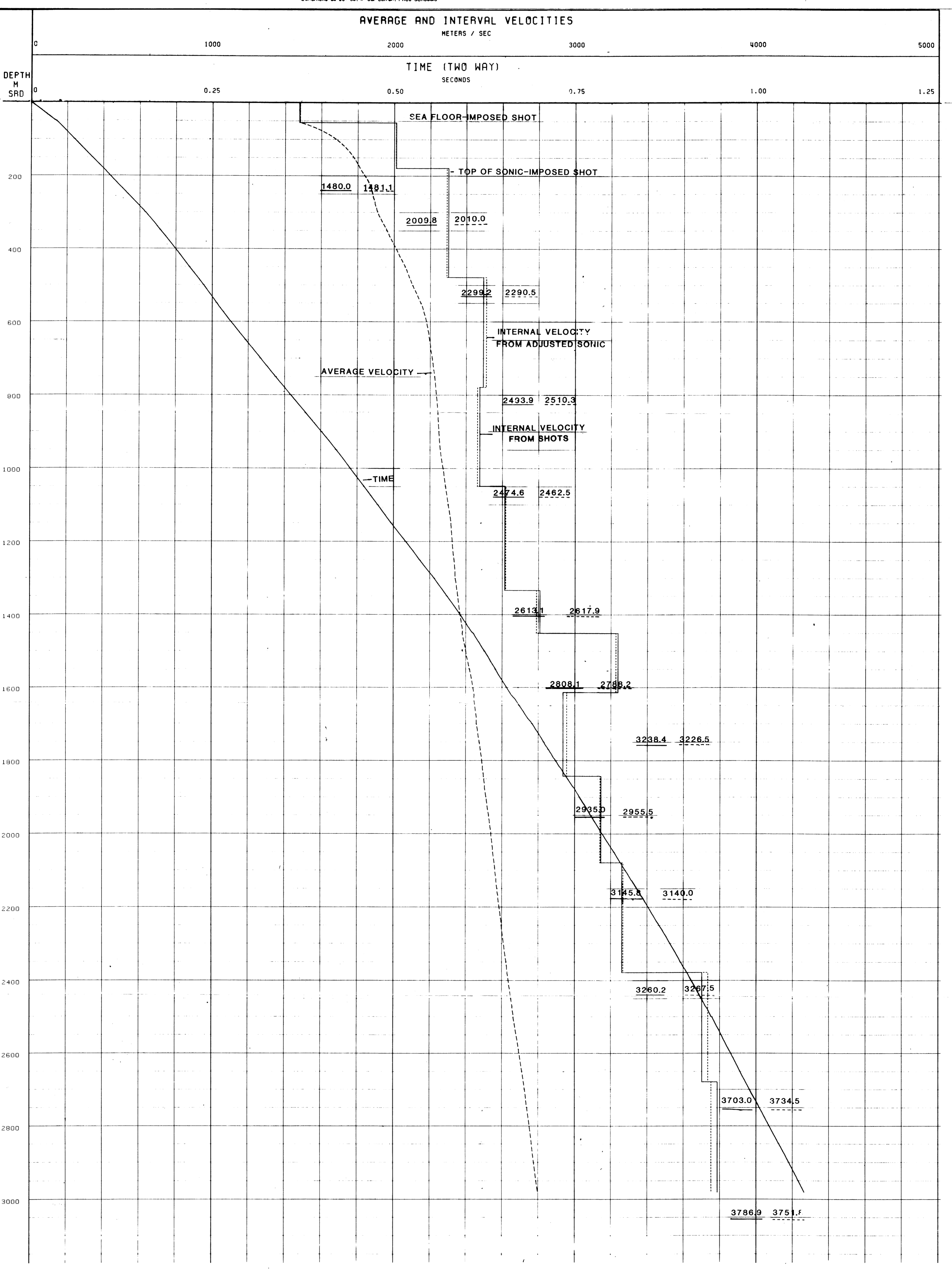


Total No. of Check Levels: 12 (from 200 to 3003 m below DF)
Velocity Log Depth Reference: SRD

Run	Date	Tool Type	Bit Size/Depth	Casing Size/Depth	Top Depth	Bottom Depth
1	21/2/86	SIS	11 1/2" @ 808 M	20" @ 84 M	94 M	785 M
2	14/01/86	SIS	12 1/4" @ 3023 M	3 3/8" @ 784 M	784 M	2881 M

Remarks:
Sonic log interval 210 - 2892 metres below DF
Density log interval 1288 - 3003 metres below DF
Bottom shot @ 3003 M below DF
Imposed shot at sea floor (75.7 metres below DF)

The well name, location and borehole reference data were furnished by the customer.
All interpretations are opinions based on inferences from electrical or other measurements and we cannot, and do not guarantee the accuracy or correctness of any interpretations, and we shall not, except in the case of gross or willful negligence on our part, be liable or responsible for any loss, costs, damages or expenses incurred or sustained by anyone resulting from any interpretations made by any of our officers, agents or employees. These interpretations are also subject to Clause 4 of our General Terms and Conditions as set out in our current Price Schedule.



COMPANY ESSO AUSTRALIA LTD
FIELD WILDCAT
WELL SNAPPER - 6
COUNTRY AUSTRALIA