

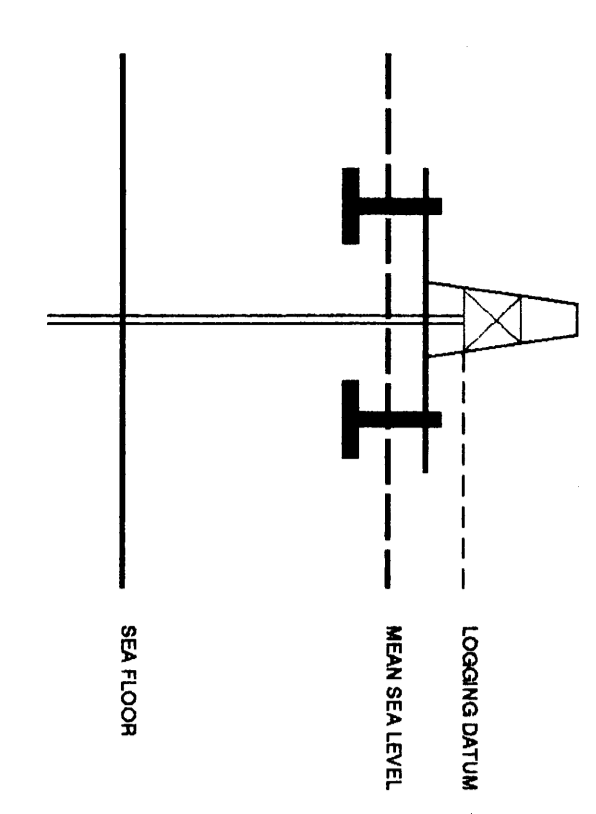
VERTICAL SEISMIC PROFILE

ZERO OFFSET VSP
 NORMAL POLARITY 20 CM/SEC
VSP AND GEORAM COMPOSITE

PLOT 6

Company: ESSO AUSTRALIA LTD.
 Well: SMILER-1
 Field: WILDCAT
 Country: AUSTRALIA
 Reference No: SV/561131/561132 Interval: 2614.00 to 182.00
 Data Logged: 13-JULY-1995 Date Processed: 21-JULY-1995
 Location: 038 28 55.18' S 148 23 17.09' E
 Elevations: KB: 25.00 DF: 24.70 GL: -122.00
 Payment Datum: MSL Depth Units: METRES
 FIELD RECORDING: Engineer: R. JOHNSON'S HOODWINKER VEA Program Version: 703-427
 COMPUTATION: Analyst: A. WASSONQ Core: STJ Scanner: 303

ELEVATION ABOVE MEAN SEA LEVEL
 Logging Datum: 25.00
 Seismic Reference Datum: 0.00



Total Number of Levels: 29
 Depth Reference: SRD

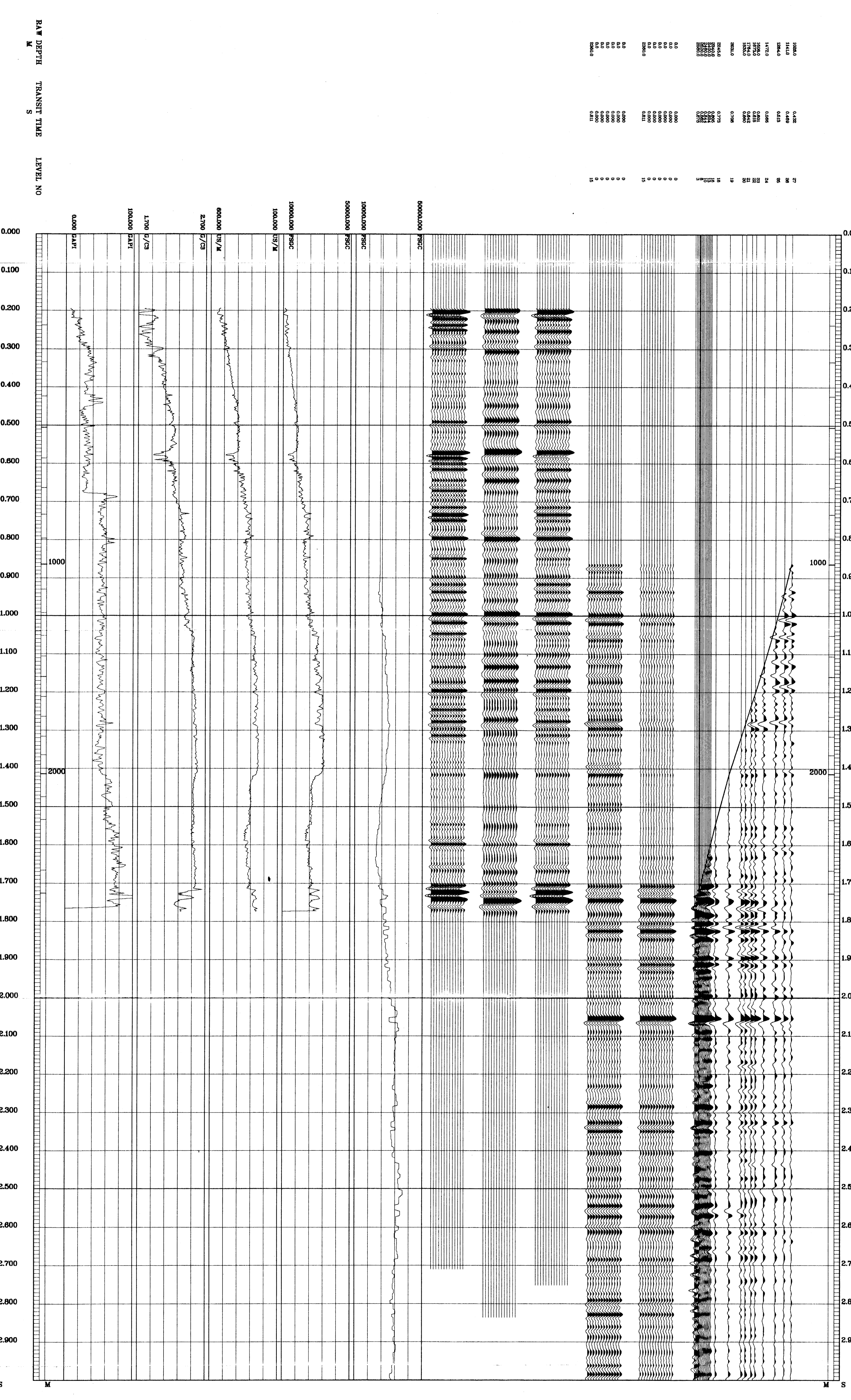
Run	Date	Total Depth	SRD	SRD	Casing Size	Top Depth	Bottom Depth
ONE	04/07/1995	46.00M	17.5 M	12.5 M	170 M	797 M	800 M
TWO	14/07/1995	64.00M	12.5 M	12.5 M	170 M	797 M	800 M
ONE	14/07/1995	80 M	5 M BELOW MEAN SEA LEVEL	10 M BELOW MEAN SEA LEVEL	80 DEC	80 DEC	80 DEC

REMARKS

The well name, location and borehole reference data were furnished by the customer.

All interpretations are opinions based on inferences from electrical or other measurements and we cannot, and do not guarantee the accuracy or correctness of any interpretations, and we shall not be liable or responsible for any loss, costs, damages or expenses incurred or sustained by anyone resulting from any interpretations made by any of our officers, agents or employees. These interpretations are also subject to Clause 4 of our General Terms and Conditions as set out in our current Price Schedule.

- WAVESHAPING
 WAYSHPAPING DECONVOLUTION
 ZERO PHASE (10-70 HZ)
 -90 DEG PHASE SHIFT
 ENHANCED UPGOING WAVEFIELD
- CORRIDOR STACK
 -90 DEG PHASE SHIFT
- CORRIDOR STACK + AGC
 -90 DEG PHASE SHIFT
- GEORAM 35 HZ
 ZERO PHASE - 90 DEG PHASE SHIFT
- GEORAM 25 HZ
 ZERO PHASE - 90 DEG PHASE SHIFT
- GEORAM 45 HZ
 ZERO PHASE - 90 DEG PHASE SHIFT
- INVERTED IMPEDANCE
- LOGGED IMPEDANCE
- SONIC
- DENSITY
- GAMMA RAY



COMPANY ESSO AUSTRALIA LTD.
 FIELD WILDCAT
 WELL SMILER-1
 COUNTRY AUSTRALIA

