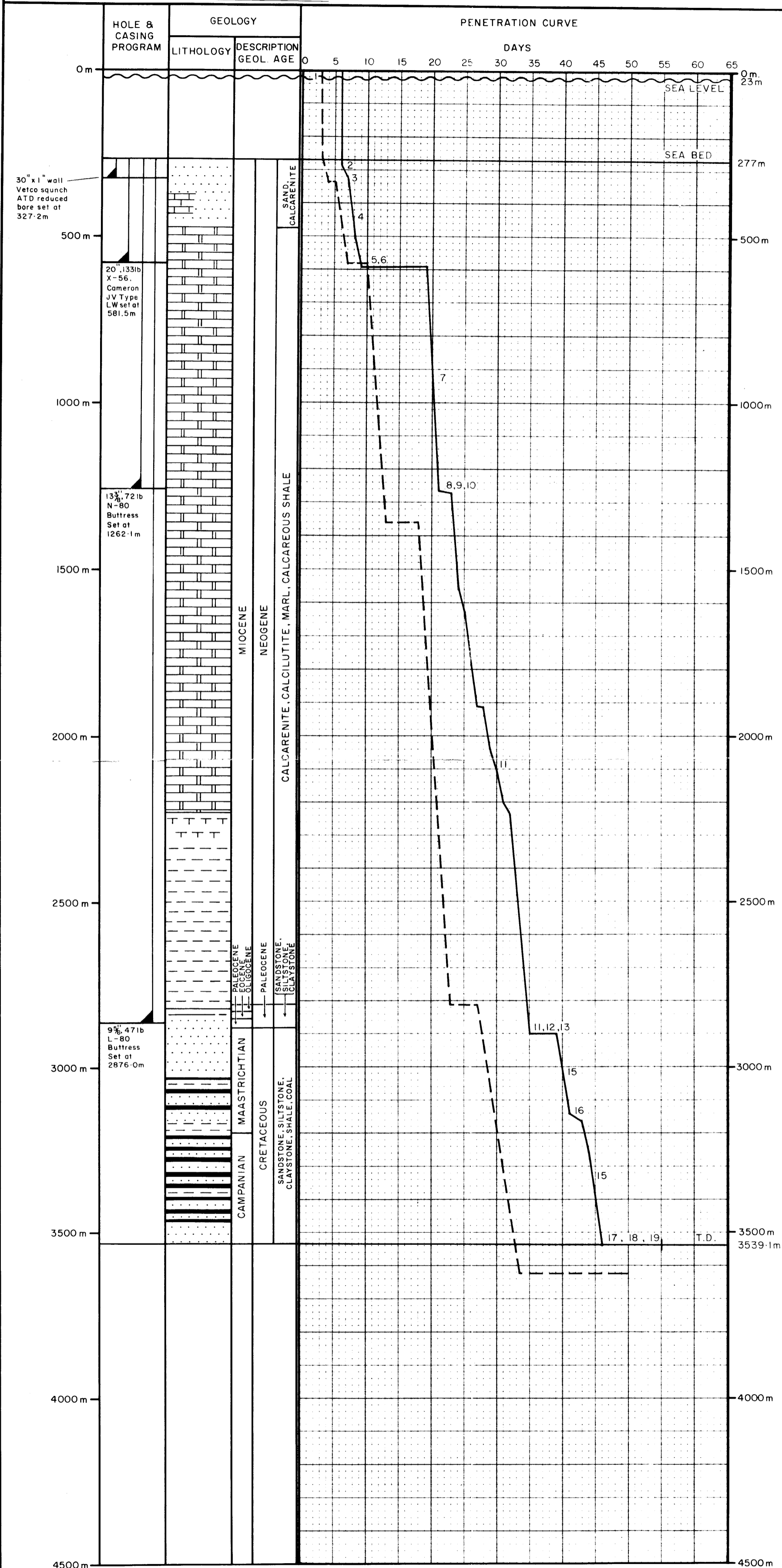




OPERATION SUMMARY
SELENE No.1

W 795 Final Report

DEPT. NAT. RES & ENV
PE902606



WELL NAME: SELENE - I
 LOCATION: Lat. 38° 37' 25.159" S
 Long. 148° 26' 11.357" E
 OPERATOR: PHILLIPS AUSTRALIAN OIL CO.
 CONTRACTOR: DIAMOND MARINE COMPANY
 DRILLING UNIT: DIAMOND "M" EPOCH
 WATER DEPTH: 254 METRES
 TOTAL DEPTH: 3539 METRES
 R/T TO M.S.L.: 23 METRES
 R/T TO SEABED: 277 METRES

THIRD-PARTY SERVICES
 MUD ENGINEERING: BAROID
 MUD LOGGING: GEOSERVICES
 CEMENTING/DST: HALLIBURTON
 ELECTRIC LOGGING: SCHLUMBERGER
 PRODUCTION TESTING: FLOPETROL
 HELICOPTERS: OKANAGAN
 POSITIONING: O.N.A.
 FIXED WING: COMMERCIAL
 SUPPLY/WORK VESSELS: A.O.S.
 PREPARED BY: D.A. WATTS
 DATE: MARCH, 1983

- LEGEND
1. MOVE IN AND SET ANCHORS
 2. SPUD AND DRILL 36" HOLE
 3. R&C 30" CASING
 4. DRILL 26" HOLE
 5. R&C 20" CASING
 6. RUN AND TEST BOP/CASING
 7. DRILL 14 3/4" HOLE AND UNDERREAM TO 17 1/2"
 8. LOG RUN 1
 9. R&C 13 3/8" CASING
 10. TEST BOP/CASING
 11. DRILL 12 1/4" HOLE
 12. LOG RUN 2
 13. R&C 9 5/8" CASING
 14. TEST BOP/CASING
 15. DRILL 8 1/2" HOLE
 16. CORING
 17. LOG RUN 3
 18. PLUG AND ABANDON
 19. PICK UP ANCHORS

RECEIVED RIG AT	0030	22-12-82
RIG ON LOCATION AT	0805	22-12-82
SPUDED AT	0130	27-12-82
T.D. AT	0430	5-2-83
RELEASED AT	1520	13-2-83